

Livermore

Lithogram



Volume XXXIV, Number 4
April 2009

Livermore Valley Lithophiles
Livermore, California

Next General Meeting:
 Thursday, April 9, 2009
 Carnegie Building, 4th and 'J' Streets
 7:30 PM

Program: The Oregon Trail - Then and Now
 A two projector program by: **Bob Trimmingham**

Next Board Meeting:
 Thursday, April 23, 2009
 The SHOP, 7:30 PM
 Members are welcome to attend!

Refreshments:

Jane, Diane, Albert, and Rich

April:
Arbor Day
Earth Day



Inside this issue:

| | |
|---------------------------|------------|
| General Meeting Minutes | 2 |
| California Shows & Events | 3 |
| Sand of the Month | 4 |
| Polymer Bead Class | 5-6 |
| Board Meeting Minutes | 7 |
| | |
| | |
| | |
| | |

Presidents Message:

Wow! This year is really moving. I want to thank Lanny for arranging for our March speaker -- he gave a very interesting talk on niobium jewelry. This month we have another great program planned, presented by our member, Bob Trimmingham.

Your club needs many volunteers for some up-coming events.

These include:

- Organizing the club display at the Alameda County Fair;
- Preparing for the rapidly approaching Wine Country Festival -- stuffing grab bags, etc;
- Helping at the Wine Country Festival (May 2-3): moving things downtown, setting-up, staffing the booth, taking-down, and returning things to the Barn;
- The Rock sale: moving rocks to Nancy Bankhead's ranch, selling the rock, assisting in loading the rock.

Join us in these activities to meet the nicest people and share some laughter.

Chris Hunt, President

Minutes of the General Meeting

January 8, 2009

The meeting was called to order at 7:33 p.m. by president Chris Hunt.

Guest speaker

Kirk McCarthy, who makes Niobium jewelry.

Guests:

Kirk McCarthy, Linda Walls. Helen Burke

Minutes of the last meeting:

Corrections: "Carving" was mis-spelled as "caring."
Beth moved to approve corrected minutes, Patty seconded. Approved.

Diane Day Treasurer's report.

Membership fees are due! Diane is making a new roster, so get your dues in.

Diane reported on expenses and income for the last two months.

Correspondence:

We got a thank you note for the donation to the Livermore Schools.

Field Trips

There's a class given by NBFT about "How to stake a claim". Speaker is from the BLM. Saturday, Mar 21.

NBFT Spring meeting is Mar 28 in Los Altos. If no one can go, Diane will mail the membership fee.

Diane would like help finding trips that people would like to go on.

Rich L:

Wine festival is approaching (May 2). Will need help in the form of a "bagging" party. April 23, Starting at ~5:00 (Thursday).

We'll need help on the days of the festival from people with trucks and vans.

Lithorama:

Things seem to be progressing nicely. Patty brought flyers. Five of the 7 dealers have their invitations.

New Business:

None.

Old Business:

We sent in money for the Brick, but have heard nothing yet. Rich L: Reported about the Mike Georges fluorescent materials. These were appraised and sold at the Castro Valley show. Sales were very good, indeed.

We'll have a sale of other materials May 9 at Nancy's house.

Science fairs: Bill B and Bob T are at the Livermore Science Fair.

Next Tues is the Pleasanton Fair. Need volunteers.

Refreshments next month: Jane, Diane, and Albert, Rich.

The meeting was adjourned at 9:10 PM

Rock Sale

Saturday, May 9th, 2009

10:00 to 2:00

1340 Hartman Rd., Livermore

FREE ENTRY

Food - Hot Dogs w/ Chips & Soda \$3.00

DUES ARE DUE!

Send to Diane Day or bring to the next meeting. Please place in an envelope marked dues. Don't just throw cash on the table.

California Shows And Events

2009

March 28-29, Calaveras
Calaveras Gem & Mineral Society
 Calaveras Frog Town USA Fairgrounds
 Highway 49 in Angels Camp
 Hours: Sat. 10-5; Sun. 10-4
 Tak Iwata (209) 928-5579
 Website: Calaverasgemandmineral.org

March 28-29, Roseville **Roseville Rock Rollers**
 Placer County Fairgrounds
 800 All America City Blvd., Roseville
 Hours: Sat.10-5; Sun.10-4
 Gloria Marie (530) 367-2262
 Email: Gloria.Marie@Conservation.ca.gov
 Website: www.rockrollers.com

April 17, 18, 19, San Jose **54th Annual CFMS Show**, Nature's Showcase
 Hosted by the **Santa Clara Valley Gem & Mineral Society**
 Santa Clara County Fairgrounds
 334 Tully Road
 Hours: 10-5 Daily
 Email: info@scvgms.org
 Website: www.scvgms.org

November 21-22 Livermore
LITHORAMA 2009 Show and Sale,
 Livermore Valley Lithophiles Gem &
 Mineral Club; The 'BARN' 3131 Pacific Ave. east of Livermore Ave.
 Hours: Sat. 10-5; Sun. 10-4. Visit us at our website www.lithophiles.org

Show information is available at the California Federation of Mineralogical Societies website: www.cfmsinc.org

Additional Resources:

American Federation of Mineralogical Societies website: www.amfed.org

American Lands Access Association website: www.amerlands.org

CO-OP website: www.coop.freesevers.com

Rock Sale, Tailgate & Bar-B-Q

Saturday, June 6th, 2009

10:00 to 4:00

425 Fulton Shipyard Rd., Antioch

Admission is FREE

Food Hamburger \$5.00 or Hot Dog \$4.00
 served with Chips and Soda.

The California Federation of Mineralogical Societies web page www.cfmsinc.org gives everyone access to the CFMS Newsletter.

Science Fairs

Livermore Science Odyssey and the Pleasanton-Dublin Science Fun Fair

I would like to thank Bob T. for helping at the Livermore Science Odyssey. I also want to thank Jim G., Rich H., Larry P. and Bob T. for helping at the Science Fun Fair held at the Alameda County Fair Grounds. Also thanks to Bob T. for bringing a display of Alameda Co. Rocks and Minerals to both of the events. I did a display that described how you use physical properties to identify a mineral.

I will make a longer report with photos in the May Lithogram.

Bill Beiriger

Sand of the Month

Oolitic Sands
William Beiriger

This month we look at sands formed by precipitation CaCO_3 in the form of Aragonite.

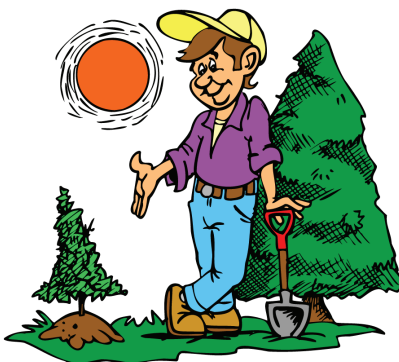
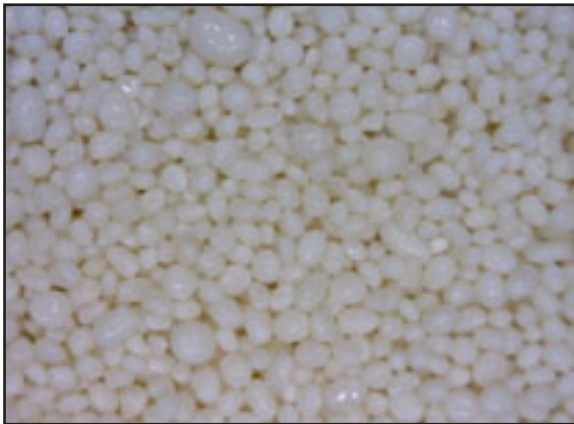
Oolitic sand forms similar to the way pearls form in an oyster by building layer upon layer of material. In the case of oolitic sands the layers are composed of calcium carbonate in the form of aragonite and sometimes, but very seldom as calcite. Aragonite and Calcite are the same chemically by belong to two separate crystal systems, Orthorhombic and Trigonal respectively.

The shorelines where these sands form have high salinity, high summer temperatures and active carbonate deposition.

I have samples of oolitic sands from two locations: Great Salt Lake, Utah and Schooner Cay, Bahamas. I am hoping for a sample from Baffin Bay, Texas.

The nucleus of the sand from the Bahamas is composed of carbonate from coral; the Texas location is composed of carbonate and also silicate, whereas the nucleus of the material from Great Salt Lake is composed of tiny brine shrimp fecal pellets.

The Bahamas sample is a very light cream in color and the surface has a very high polished luster while the Utah material is a very light gray and has a dull luster.



Polymer Clay Beading Class

The Joy of Making Beads!

By Beth Myers

It was, as I remember, a couple years ago when Nancy suggested a polymer clay class. It is an inexpensive, colorful and creative medium. Chemically, polymer clay is chemically much like the pvc piping used in so many households today. The clay doesn't dry out when exposed to the air like it's organic counterpart. Minimal, or even no tools are required to work it and it is hardened or baked at a very low temperature. Perfect for all ages!

We began our clay beading class on Sunday, February 15, 2009 at Nancy Bankhead's ranch home in Livermore. Club members Gayla Langlois, Jane Crone, Chris Hunt and Lanny Thompson attended. Guests included Corrine Coffey, Kathy Balhoun and Melandie Gay.

To begin, the polymer clay is conditioned by rubbing it between the hands until it softens. This process can be hastened by running the clay through a pasta machine several times. Set the machine on it's widest setting for the rollers. Run the clay through, fold the clay over and feed the folded end back through the machine. The pasta machine can also be used to blend colors together. The polymer clay comes in colorfast colors, and blending by hand for smooth graduated colors can be a bit tedious. The pasta machine makes this transition of colors easier.

The aim is to get a flat layer that has a smooth, even thickness. If you don't have a pasta machine: place the conditioned clay on a length of waxed paper, cover with another length of waxed paper and use a rolling pin or a short length of pipe to roll out the clay.



Corrine using the pasta machine

Our next step was to form clay "logs", or canes. Using a small amount of a contrasting color, roll the clay between the palms, or with the palms against the table surface to form a cane. Wrap the cane in the flattened length of clay and roll it lightly between the palms to seal the wrap. If you refrigerate the log for about fifteen minutes, it will keep its round shape better for cutting.

Decide how wide you want your bead and using a sharp knife cut the cane into sections. You can slice a few beads from your original cane, then roll the cane thinner and longer. Slice this thinner cane into three equal pieces. Stack these three canes together and wrap with a flattened length as before. When this new cane is sliced, it reveals a more complex design.



Cane sections made by Chris and Jane

Turn each section so the contrasting center design is showing and pierce with a toothpick or large needle dipped in cornstarch or talcum powder. The best method of piercing is to pierce from one side then run the needle through again from the opposite side to get an even hole through your bead. Handle the pierced bead gently – you don't want to compress the hole you just made. Alternately, you can pierce the beads with wire or a skewer and leave them on the wire to bake.

Place your beads on a parchment paper lined ceramic tile or dish and bake in an oven at 275 degrees for 15 minutes per ¼ inch of thickness. If your bead is more than ¼ inch thick it will require more baking time. Follow the manufacturer's instructions. Remove carefully and let cool. The baked clay can be sanded to remove any rough edges, such as may occur from the piercing process. If desired, spray the beads with lacquer or brush with a water based varnish to give your beads a hard wearing finish.

Polymer Clay Beading Class

We returned to Nancy's on Sunday, March 8 to string our beads with natural stones. Gayla and Lanny had conflicts that day. Renee Gilmore joined the rest of our original group. This was Renee's first experience beading and from her response - I believe she is hooked! What a delight!



Close-up of beaded bracelets made by Kathy and Renee



Left to right: Chris Hunt, Jane Crone, Nancy Bankhead, Kathy Balhourn, Corrine Coffey, Renee Gilmore, Melandie Gay

Minutes of the Board Meeting

January 21, 2009

The meeting was called to order at 7:30 PM by President Chris Hunt.

We discussed the leak at the shop. Brian Tibbits at LARPD is in charge of maintenance. Lynn Zirkle is coordinating access to the shop with Brian to discuss the repairs. We don't have a report yet about the results.

Treasurer's report. Computer troubles, so no summary. There is, however, a new roster assembled.

Correspondence: Got a notice about State taxes going up.

Bill B: Got a few email messages, mostly about the new Wilderness law.

He also received a letter from a graduate student at SFSU (Michelle Newcomer) asking about a grant and/or materials.

As it seems interesting to provide some support for this work, we'll bring this up at the next general meeting.

Programs.

Chris had a suggestion that we get someone from USGS to come talk about the earthquake map. We need someone to follow through and find a speaker. Perhaps this is of enough interest to have at the Library.

Bill B will present a program in September. "A Trip to the Desert"

Bob Trimminghan volunteered for April. "TBD"

Wine Country Festival May 2, 3. Plan is to stuff grab bags on April 23 (night of the board meeting). Please come help!

Old Business:

Science Fairs. Livermore: We gave out a bookmark (Lithorama), and a polished stone. Bob T. showed

a display of Alameda Co Rocks & minerals. Bill B. Had a display on how to use Physical Properties to identify minerals.

For Dublin/Pleasanton: Had lots of help and lots of people there. We provided materials for the rock identification cards. We also had both exhibits from the Livermore Fair.

Rock Sale at Nancy's (May 9). We discussed hours (9:00 -- 2:00), and admired at the flyer. We decided to serve food (hot dogs). Proposal is \$3.00 for a hot dog, soda and a bag of chips. At the rock sale, we'll just offer cutting materials, and save the minerals for another time.

The meeting was adjourned at 8:20 PM

Members present: Chris Hunt, Bob W., Diane D., Deloris C., Dick F., Bob T., Bill B. and Patty I.

The meeting adjourned prior to 8:00 PM.

STATE ROCKS, etc.

Illinois

State Mineral - Fluorite

Indiana

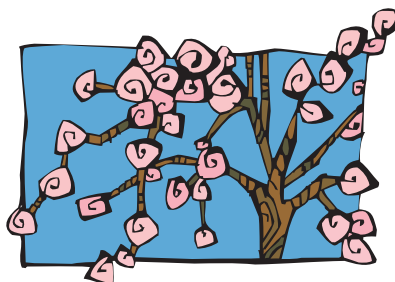
State Rock - Limestone

Iowa

State Rock - Geode

Kansas

None



*Cherry Blossom
Time*

Livermore Valley Lithophiles

Bill Beiriger, Editor
P.O. Box 626
Livermore, CA 94551-0626
info@lithophiles.com

We're on the Web at www.lithophiles.org

Elected Officers and Club Information

Elected Officers:

President Chris Hunt (925) 443-5525
V. President Bill Snyder (925) 443-5497
Secretary Bob Whiteside (925) 455-1540
Treasurer Diane Day (925) 606-0888

Membership: The Livermore Valley Lithophiles invites to its membership anyone genuinely interested in minerals, gems, lapidary, geology or any of the other earth sciences, and who desires association with others of like interests. Membership in our club consists of three classes: Senior, anyone eighteen years or older; Junior, anyone under eighteen; and Honorary. Dues are for the calendar year and are as prescribed in the by-laws, Article III. \$25.00 per family, \$20.00 per individual and \$10.00 for Juniors (twelve and older.)

Meetings: General Meeting – Second Thursday of each month, 7:30 p.m. at the Carnegie Building, 4th and J Streets, Livermore. Board Meeting – Fourth Thursday of each month, 7:30 p.m. at the Club Shop or to be announced in the *Lithogram*. Any special meetings or places will be published in the *Lithogram*.

Club Shop: The shop at the Barn is open to club members 7:00 p.m. to 10:00 p.m.. on Tuesday nights. If no one arrives by 7:30 p.m.. or if the Shop Foreman has not been informed a member will arrive late, then the shop will close at 7:30 p.m. Call Lynn Zirkle, Shop Foreman, at (925) 443-2920.

Field Trips: Location and date will be published in the *Lithogram*.

Bulletin: *Livermore Lithogram*. Published monthly and mailed or emailed to active members and guests. News of interest, reports and articles must be received by the first Tuesday of the month. Articles may be reprinted by giving proper credit.

Editor:
Bill Beiriger,
Livermore, CA 94551-0626,
email: info@lithophiles.com

Shop open every Tuesday at 7:00 PM

General Meeting April 9th at 7:30 PM
Board Meeting April 23rd at 7:30 PM