

Livermore

Lithogram



Volume XXXVII, Number 4 **Livermore Valley Lithophiles**
April 2012 **Livermore, California**

Next General Meeting:
 Thursday, April 12, 2012
Livermore Library Community Room
 7:30 PM

Program: **California Blue Mine**
California's Finest Aquamarines
Rick Kennady

Next Board Meeting:
 Thursday, April 26, 2012
 7:30 at 'The Shop'
 Members are welcome to attend!

Meeting Location: Livermore Library Community Room

Refreshments: Albert Hess and Jane Crone

April:
Arbor Day
Earth Day

Inside this issue:



Presidents Message:

Happy Easter Lithophiles! I hope to see you at the Consolidated Rock field trip on April 1st and later at the general meeting on April 12th.

Consolidated Rock & Mineral Shop in Vacaville is quite the place. This is more than a rock shop, with a museum of spectacular specimens plus a huge variety of material for sale. Check out the reviews on Yelp.com for some personal opinions on the shop. According to the Yelp reviewers it's a "5-star" attraction! We plan to start at Consolidated Rock at noon on April 1st. Lithophiles who want to carpool should meet at the Barn in Livermore at 10:30.

We've rescheduled the geology field trip up Del Puerto Canyon for Saturday, May 19th. Mark your calendars! We're hoping for a great turnout. Nancy Bankhead has agreed to serve as "convener" for this trip – so look to her, or the Lithogram, for logistical details.

The program for April has us quite excited – we've asked Rick Kennedy to tell us about the California Blue Mine in San Bernardino County, a new mine that "has produced some of California's highest quality Aquamarine crystals." I hope to see you on April 12th for this interesting talk.

We need your help – please volunteer for a club assignment in the coming year. Critical needs are for Lithorama Chairperson and California Federation representative. The Lithorama is our primary fundraiser –

General Meeting Minutes Feb. 9	2
Board Meeting Minutes Feb. 23	3
Program, Notes, Etc.	4
School Report	5
Notes From Natural History World	6
Cascade Volcanoes - Part 6	7
HELP WANTED JOBS	8
"The Shop"	9-10
Shows & Events & Field Trips	11

Continuation of Presidents Message:

without the money earned at Lithorama, we won't have the funds to pay for rent and equipment at the shop, or for the meeting room or speakers at the general meetings. Your membership dues cover insurance, the Lithogram, and some meeting costs. My guess is that shop dues cover maybe 2-5% of the shop cost. We need the Lithorama to fund the bulk of our activities and we need you to step up to help out. Let me know how you can help.

-Rich Hunt rcjhunt@comcast.net 925-443-5525

Minutes of the General Meeting

March 8, 2012

The meeting was called to order at 7.35 PM by President Rich Hunt at the Livermore Library Community Room A.

Guests: - Bill Bish, Tim Rose, and Steffanie Angelo.

Correspondence: - Checks were received for dues, correspondence from Chase Bank, several show flyers and, a copy of *Jewelry Artist*.

Minutes: The minutes were approved as corrected (afternoon shop times in error.)

Treasure's Report: As Shelley Buchberger was ill; Rich Hunt gave the Club's checking account balance.

Help Wanted List: A help wanted list of open Club duty slots was circulated during the meeting by Rich Hunt. Several important jobs need to be filled.

Program: Lee Davisson introduced our guest speaker Chris Rose, a colleague of his at LLNL. Mr. Rose gave a very interesting talk dealing with minerals first found in California; approximately 130 mineral species were first discovered in California. Four mineral occurrences were described, along with the minerals found at these locations. The four mineral locations included the benitoite deposits in the Coast Ranges in San Benito County; barium silicate minerals near Pine Flat Dam in Fresno County; evaporate minerals from deposits at Searles Lake at Trona, California; and, tellurium-lead deposits in mineralized quartz veins at Otto Mountain, near Baker, California.

Schools: Lee Davisson gave a brief report on the Livermore Schools Science fair held March 1 at Junction Avenue School. Bill Beiriger indicated that the cost for Brunton compasses has gone up to about \$300 each,

Shop Report: Albert Hess indicated that he will continue to man the early shop day, 3pm to 5pm, on Tuesdays hoping that someone will show up.

Arts Council: Nancy Bankhead informed us about a one-month-long function they will have in August 2013. We may wish to have a display at the function.

Girl Scout 100-Year Anniversary: The Club will man a booth at this celebration to be held at the Alameda County Fairgrounds on Saturday May 5 from 10am to 7pm. We will need considerable help as we may display lapidary skills, carving, and pass out polished stones.

Field Trips: - A field trip to Consolidated Minerals in Vacaville will take place on April 1. In addition, a field trip to Del Puerto Canyon, west of Patterson, will take place on May 20.

Programs: - Rick Kennedy will give a program for the April meeting on aquamarine deposits from the "California Blue Mine" near San Diego.

Old Business: No old business.

New Business: No new business.

Refreshments: - Albert Hess and Jane Crone will provide refreshments for the April meeting.

The meeting adjourned at 9:08pm.

Larry Patzkowski, Secretary

Minutes of the Board Meeting

March 22, 2012

The meeting was called to order at the Barn at 7:33 PM by President Rich Hunt.

Those also in attendance included Bill Beiriger, Bob Trimmingham, Lee Davisson, Dick Friesen and Andrea Rodrigues.

Correspondence: -Bill Beiriger received two thank you cards from representatives of the Livermore schools. One, from Patricia Boyle, thanked the Club for our donation of pyrite specimens. The other thank you card was from Regina Brinker thanking the Club for support at the recent Science Odyssey.

Treasure's Report: - The Club's checking account balance was noted. (Shelley Buchberger, our treasurer was ill.)

Program: - The April program will be given by Rick Kennedy on a new aquamarine deposit located in San Bernardino County.

Shop Report: - Dick Friesen reported that the Shop has been fairly busy with 3 to 6 members working. The status of the Shop space heater was discussed. It appears that the heater is on its last legs and will need to be replaced prior to next winter. In addition, the water heater for the wheel's water supply is not functioning, and when it has worked, it causes the circuit breakers to trip often. Some options are being studied to solve these two problems.

Schools: - Bill Beiriger indicated that the school talks he has been giving are winding down. Bill brought up the subject of the possible needs of school science programs (funded by the Mike Gorges account money) including possible needs at St. Michaels, Livermore charter and Montessori schools, and the school associated with the church Mike Gorges had attended in Fremont.

Bill Beiriger will have a display at the science fair at Castro Valley High School on May 5.

Two Brunton compasses will be purchased for presentation to Cal State University East Bay (CSUEB) Geology Department students. Bill Beiriger will contact Professor Luther to see their future needs.

Girl Scouts:-On May 5, the Club is committed to have a booth at the Girl Scout 100-Year anniversary celebration at the Alameda County Fairgrounds on Saturday May 5, 10am to 7pm. People to help are needed.

Future Programs: - A future program by John Stockwell on thunder eggs is being pursued by Bob Trimmingham for May or June

Field Trips: -Field trip dates to the Consolidate Rock facility near Vacaville and Del Puerto Road have been set. The Consolidated trip has been changed to **Saturday March 31** from Sunday April 1. Rich Hunt will organize the Consolidated trip.

The Del Puerto trip will take place on **Saturday May 19**. Bob Trimmingham plans to do a recon trip of the Del Puerto Canyon area and Lee Davisson will research the geology along the canyon and prepare a brief write-up. He will also contact the geology staff at California State University Stanislaus (Turlock) as they have a selection of photographs depicting outcrops along the road.

Possible one-day field trips were discussed including several locations. Andrea Rodrigues and Lee Davisson will work on possibilities.

Lithorama:-Volunteers are still needed for this event. Dick Friesen will contact dealers and exhibitors. Lee Davisson will look into details of how the Show has been ran in the past and may consider an active role. Bill Beiriger indicated that the new banner will need to be ordered and that we have already paid for its hanging and that the use of the Barn has been locked-in.

New Business:-We will not have a Fair case this year as the Fair is using the building to celebrate their anniversary. It was decided by consensus that the Fair will not be allowed to use any of our cases as they often are returned with missing parts, etc.

The meeting adjourned at 8:58 PM.

Larry Patzkowski, Secretary

**- - Program for April Meeting - -
Rick Kennady**

**California Blue Mine in San Bernardino County
Some of the Finest Aquamarine ever found in California**

- - 100 Birthday of the Girl Scouts - -

Lithophiles Display and How-To-Do-It Booth will be at the birthday party.

Members - Please lend a hand at the Lithophiles Booth

**We will have a Table Top Cabbing Machine and a Table Top Free Form Cabbing Machine.
We can also do Beeding, Slate Carving, Soapstone Carving.**

- - - BUT WE NEED YOU HELP - - -

**It will run from 10:00 AM - 7:00 PM
May 5, 2012**

**Alameda County Fair
Gem and Minerals / Hobby Building**

The Alameda County Fair is celebrating 100 years in 2012. Fair Staff is currently working on a special exhibit to showcase 100 Years of Alameda County Fair history and memorabilia.

This display will be located in the Gem and Minerals/Hobby Building "O" for 2012.

As a result, there will be no Adult or Youth Hobby Collection competition for 2012.

To enter individual items please consult the Entry Guide's list of categories for more options.

School Science Program

Bill Beiriger

School Classrooms

Presentations to the second and fourth grade classes in the schools has been my best year since I started doing this project.

I have now given talks to 49 (**Not 67**) classes with a total student count of 1257. Most of the presentations took place in January and February.

I did the 2nd and 5th grade classes at St. Michaels' School, I also may be doing about 6 second grade classes at Valley View School in Pleasanton.

Stay tuned for another report in April or May.

Science Odyssey

Lee Davisson

The Lithophiles had a booth set up again at this year's Science Odyssey held March 1st at Junction Avenue School. Bill and Lee both ran displays, answering questions from students and parents non-stop for one and a half hours a giving away a polished rock. Bill had a terrific display of sands from around the world arrayed in a carousel from which he was able to project each through a digital microscope onto a computer screen. This allowed the kids to see what individual sand grains looked like, what they are made of, and the variety of types within a single sample, including tiny sea shells. Lee brought in and operated a small rotating rock tumbler and setup a petrographic microscope along with rock thin sections provided by Bill. There were three poster displays one showing basic lapidary methods, another with different grades of polishing grits and an example of a rock polished for each, and a third showing how to make a thin section.

Helping at the booth with Bill and Lee were Lee's son and daughter Josh and Sarah Davisson and Larry Patzkowski and his Grand Daughter Stephanie Angelo.

100 Birthday Party for the Girl Scouts

The society has be asked to have a booth at the Alameda County Fair Grounds for the 100 birthday of the Girl Scouts. We are planing on some type of a display the have members show how we make Cabochons, Free-form carving and maybe Slate and Soapstone carving.

The event will be May 5, 2012 from 10:00 to 7:00. This will be a long day if only a couple of members work the booth, **THIS IS A ONE TIME EVENT, SO PLEASE LEND A HELPING HAND**. I will not be at this event because I will be the Lithophiles representative at the Castro Valley High School Science Fair.

This can be a good way to get a few new members and it should be fun for all who help.
Contact Bill Beiriger 443-5769.

Castro Valley High School Science Fair

I will be representing the Lithophiles at a science fair in Castro Valley on May 5th, I will have my educational sand display and I will also have a digital microscope with sand samples at the event.

Bill Beiriger

Notes From The Natural History World

300 myo Layer of Volcanic Ash Covered a Forest in Southern Inner Mongolia.

University of Pennsylvania Scholarly Commons

A team headed by Jun Wang of the Chinese Academy of Sciences and Hermann Pfefferkorn of the University of Pennsylvania are studying a petrified forest in Inner Mongolia.

This tropical forest was destroyed by a volcanic eruption about 298 myo during the Permian Period. Some of the trees were about 85 feet tall and belonged to two genera of plants *Sigillaria* and *Cordaites* that are now extinct, these trees formed the upper area of the forest. Another group of extinct spore-producing trees that belonged to the genera *Noeggerathiales* and there also were *Cycads* that lived below the larger trees.

Deadly Meat-Eating Dinosaur

University of Alberta, Canada

Carnotaurus was a 8 feet long predator that had a huge tail that had interlocking tail bones. The caudofemoralis muscle of the tail had a tendon that attached to its upper leg bones. By flexing the muscle the legs were pulled backwards giving *Carntaurus* more power and speed.

The Large and Small of Items

A size comparison of items from as small as 10^{-35} meters to as large as 10^{27} meters
Enjoy while this site is active.

Copy the below address and put it into your browser.
Then move slide BAR at the bottom of the frame.

<http://htwins.net/scale2/scale2.swf?bordercolor=white>



The Cascade Volcanoes of California, Oregon and Washington.

Compiled by Bill Beiriger

Information and Photos from the Global Volcanism Program - Smithsonian Institution.



Mount Hood - Oregon

Last Eruption - 1866

11,240 feet

45.374° N 121.695° W

Mount Hood, Oregon's highest peak, forms a prominent backdrop to the state's largest city, Portland. The eroded summit area of Mount Hood consists of several andesitic or dacitic lava domes. Major Pleistocene edifice collapse produced a debris avalanche and lahar that traveled north down the Hood River valley and crossed the Columbia River. The glacially eroded volcano has had at least four major eruptive periods during the past 15,000 years. The last three occurred within the past 1800 years from vents high on the SW flank and produced deposits that were distributed primarily to the south and west along the Sandy and Zigzag rivers. The last eruptive period took place around 170-220 years ago, when growth of the Crater Rock lava dome was accompanied by pyroclastic flows and lahars down the White and Sandy rivers. The Sandy River lahar deposits extended to the west as far as the Columbia River and were observed by members of the 1804-1805 Lewis and Clark expedition within a few years of their emplacement. Minor 19th-century eruptions were witnessed from Portland.

Photo by Richard Fiske (Smithsonian Institution).

<http://www.volcano.si.edu/world/volcano>

Livermore Lithophiles – Help Wanted

The Lithophiles need a variety of volunteer helpers to assure that the club can provide the programs, field trips, and services that we members expect. I've listed below all the jobs, small and large, that the club needs someone to step up and handle. Critical needs are Lithorama chairperson and Federation Director. If you need to know what's involved with each job, ask me or any other long-time member. Check out the list below, choose the job that resonates with you, and let me know how you will help your club.

-Rich Hunt
rcjhunt@comcast.net
925-443-5525

Alameda Co. Fair Exhibit Chair - **Vacant**

Christmas Party Chair - **Vacant**

Coffee for Meetings – Albert Hess

Door prizes/Raffles – Jane Crone

Education Chair – Bill Beiriger

Federation Director - **Vacant**

Field Trip Chair - **Vacant**

Historian/ Scrapbook - **Vacant**

Librarian - **Vacant**

Lithogram Editor – Bill Beiriger

Lithorama Chair - **Vacant**

Lithorama Exhibitors/Dealers

Lithorama Food Booth

Lithorama Publicity

Lithorama Set-up Dinner

Livermore Science Odyssey – Lee Davisson

Meeting/Program Publicity - **Vacant**

North Bay Field Trip Rep - **Vacant**

Program Chair - **Vacant**

San Leandro Library Event Chair - **Vacant**

Picnic Chair - **Vacant**

Sunshine - **Vacant**

Shop Foreperson(s) – Stephanie Goldsmith, Chris Hunt, Diana Carey, Frank Gouveia & Albert Hess

Shop Talk

By Frank Gouveia

Here's a rundown of what was happening in the shop for the month of February.

The first week Stephanie Goldsmith was foreman and spent some time training Diana Carey on the duties she would need to be responsible for as one of our new forepersons. I'm sure after training was over they worked on one of their many projects. Lee Davisson and his son Josh showed up and Josh was introduced into the world of cab making. Josh had chosen a nice piece of Red Jasper for his first cab ever. I'm sure he got plenty of help getting started from our experienced members.

On the second week we had a great turnout at the shop with 8 people coming by. I was foreman and was also given the rundown on being foreman from Stephanie on everything from lights and water to the all important mopping up at the end of the evening. The rest of the night I took notes on what everyone was doing as well as some pictures, I'm currently in between projects to work on. Diana was busy slicing a nice piece of Malachite which she will use for making cabs and also to do some carving on. Her husband Don came by later and was ready to get dirty looking for a lost slice in the saw when fortunately we found it behind the blade guard. Lee and his son Josh showed up and Josh got started right away on his first cab the Red Jasper. He got lots of help from Stephanie on technique and putting his work on a dob stick. Lee brought in a crate of some rock samples he had collected. We spent some time talking about the different samples he had and how they were formed. I've got to say Lee is a very knowledgeable geologist. Joseph Cross brought in a very large piece of Emerald Verde he got out in the Delta. While that was being cut on the saw Joseph used the small saw to cut up some green glass. As well as being a great teacher Stephanie was busy working on one of her many jewelry projects, a nice ring for her husband Jeremy. Stephanie's mom Marilyn came by and helped her with putting cabs on dob sticks.

Week three we had Chris Hunt as our foreman and she was accompanied by her husband President Hunt AKA Rich. Lee and his son Josh showed up, Lee did a lot of slabbing and I was told that Chris and Stephanie both helped Josh on how to rough down a piece of Rose Quartz for his next cab. Rich was having some issues with the piece he was working on it kept being ripped out of his hands on the 220 wheel. It was found that the wheel had worn through to the backing and needed to be replaced. It worked well after that. I was battling a cold and losing that battle so I stayed home and worked on a bowl of chicken soup.

On week four Albert Hess showed up for the early shift as foreman unfortunately nobody came by so he worked on sanding his canes and walking sticks by hand. His thoughts are to inlay a cab on the butt of the handle. I suggested a nice geode or sphere for the top of his staph a kind of wizard like thing. Albert has been showing up early every Tuesday even though his scheduled shift is the third Tuesday of the month. He says he's not sure how long he will continue to be there every Tuesday early since no one has showed up. Stephanie and her husband Jeremy showed up. Stephanie polished some of her silver and worked on her cabs. Jeremy read and kept her company. Lee and Josh came by. Josh got busy on more cabs while Lee and I discussed minerals then checked out all the gems I had purchased in Brazil when I was there in 1992. Lee also did some mineral identification. Stephanie and I were co-foremen this night for Diana.

Some side notes: Stephanie made a nice instruction sheet for lighting the heater so we all go home with eyebrows and eyelashes. I will be making a sheet on how to use the flat lap. If anyone has good knowledge of some of the other machines and would like to make up an instruction sheet that would be great just let Stephanie know. Also I will be taking a look at the water heater to see if I can fix it or if it's time for a replacement.

That's all from the shop...Rock on!

The Shop is open from 7pm to 10pm every Tuesday with extended hours on the third Tuesday of the month when the shop opens early at 3pm.

Shop Forepersons

1st Tuesday – Stephanie Goldsmith

2nd Tuesday – Frank Gouveia

3rd Tuesday – Albert Hess (3pm to 7pm), Chris Hunt

4th Tuesday – Diana Carey



Diana - Malachite Slab



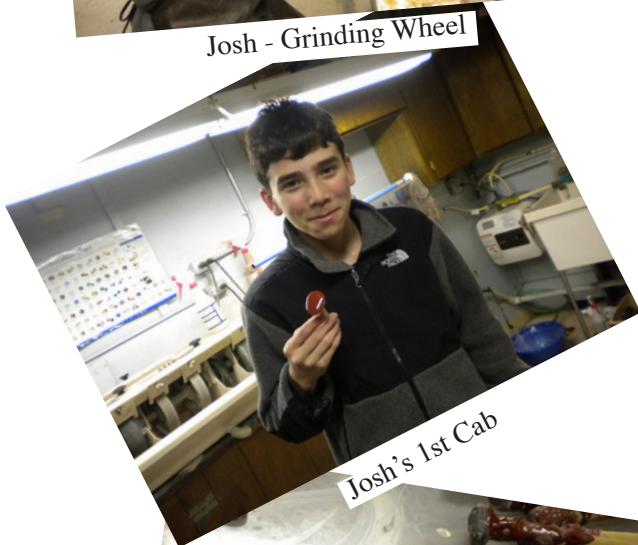
Frank - Trim Saw



Josh - Grinding Wheel



Josh & Stephanie - Dop Station



Josh's 1st Cab



Lee with Rock Slab



Diana's Malachite Cab



Albert with (what!) NON-Petrified Wood

California Shows And Events

2012

April 7-8, 2012: PARADISE, CA
Paradise Gem & Mineral Society
 Elks Lodge, 6309 Clark Road
 Hours: Sat 9 - 5 ; Sun 9 - 4
 Contact: Manuel Garcia, (530) 877-7324
 Email: mmpg@att.net
 Website: www.paradisegem.org

April 14 - 15: MARIPOSA, CA
Mariposa Gem & Mineral Society
 Mariposa County Fairgrounds
 5005 Fairgrounds Road
 (Hwy 49, 1.8 miles South of Mariposa)
 Hours: Sat. 10 - 6; Sun. 10 - 4
 Contact: Randy Bolt or Chel Bebernes,
 209) 742-7625

April 20 - 22: SAN JOSE, CA
Santa Clara Valley Gem & Mineral Society
 Santa Clara County Fairgrounds
 334 Tully Road
 Hours: Fri 9 - 5; Sat & Sun 10 - 5
 Phone: (408) 265-1422
 Email: info@scvgms.org
 Website: www.scvgms.org

April 28 - 29: SANTA CRUZ, CA
Santa Cruz Mineral & Gem Society
 Santa Cruz Civic Auditorium
 307 Church St (corner Church & Center)
 Hours: 10 - 5 daily
 Contact: Dean Welder, (408) 353-2675
 Email: wdcanwelder@yahoo.com
 Website: www.scmgs.org

May 12 - 13: RENO, NV **Reno Gem & Mineral Society** Reno Livestock Events Center, 1350 North Wells Avenue Hours: Sat. 10am-5pm; Sun. 10am-4pm Contact: John Peterson (775) 849-1522 website: www.renorockhounds.com.

May 12 - 13: JACKSON, CA **Fossils For Fun Society** Kennedy Gold Mine, 12954 Kennedy Mine Road Hours: 9 am - 5 pm Daily Contact: Debbie Bunn (916) 929-6665 E-mail: fossilsforfun@hotmail.com website: www.fossilsforfun.org

November 17 & 18, 2012 Livermore LITHORAMA 2012 Show and Sale, **Livermore Valley Lithophiles Gem & Mineral Society**; The 'BARN' 3131 Pacific Ave. east of Livermore Ave. Hours: Sat. 10-5; Sun. 10-4. Visit us at our website www.lithophiles.org

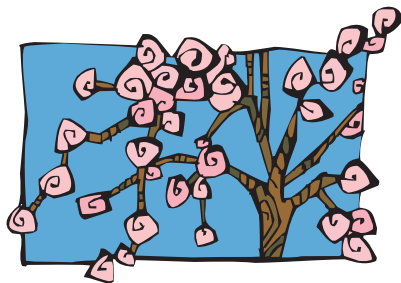
Show information is available at the California Federation of Mineralogical Societies website: www.cfmsinc.org

Additional Resources:

American Federation of Mineralogical Societies website: www.amfed.org

American Lands Access Association website: www.amerlands.org

CO-OP website: www.coop.freeservers.com



Cherry Blossom Time

The California Federation of Mineralogical Societies web page www.cfmsinc.org gives everyone access to the CFMS Newsletter.

Field Trips

March 31 Club Trip to Consolidated Rock & Mineral Shop in Vacaville - Contact Rich Hunt 443-5525

April 5-8 Topaz Mt. & Dugway Geode Beds, Delta, UT for topaz, red beryl, hematite crystals and geodes. CFMS Field Trips North, Jim Barton.

May 19 - Saturday - Del Puerto trip

June 13-16 Tri-Federation to Vale area, OR for petrified wood, plume agates, jaspers. AFMS/CFMS/NFMS, Doug True, dtruefossils@yahoo.com.

Livermore Valley Lithophiles

Bill Beiriger, Editor
P.O. Box 626
Livermore, CA 94551-0626
info@lithophiles.com

We're on the Web at www.lithophiles.org

Dues Are Due!



Elected Officers and Club Information

Elected Officers:

President Rich Hunt (925) 443-5525
V. President Lee Davisson (925) 371-0699
Secretary Larry Patzkowski (925) 426-7768
Treasurer Shelley Buchberger (925) 292-7122

Membership: The Livermore Valley Lithophiles invites to its membership anyone genuinely interested in minerals, gems, lapidary, geology or any of the other earth sciences, and who desires association with others of like interests. Membership in our club consists of three classes: Senior, anyone eighteen years or older; Junior, anyone under eighteen; and Honorary. Dues are for the calendar year and are as prescribed in the by-laws, Article III. \$25.00 per family, \$20.00 per individual and \$10.00 for Juniors (twelve and older.)

Meetings: General Meeting – Second Thursday of each month, 7:30 p.m. (**Locations change goto Lithophiles WEB-SITE**). Board Meeting – Fourth Thursday of each month, 7:30 p.m. at the Club Shop or to be announced in the *Lithogram*. Any special meetings or places will be published in the *Lithogram*.

Club Shop: The shop at the Barn is open to club members 7:00 p.m. to 10:00 p.m.. on Tuesday nights. If no one arrives by 7:30 p.m.. or if the Shop Foreman has not been informed a member will arrive late, then the shop will close at 7:30 p.m. Shop Foreman, OPEN.

Field Trips: Location and date will be published in the *Lithogram*.

Bulletin: *Livermore Lithogram*. Published monthly and mailed or emailed to active members and guests. News of interest, reports and articles must be received by the first Tuesday of the month. Articles may be reprinted by giving proper credit.

Editor:
Bill Beiriger,
Livermore, CA 94551-0626,
email: info@lithophiles.com

Shop open every Tuesday at 7:00 PM

General Meeting April 12th, at 7:30 PM
Board Meeting April 26th, 7:30 PM -The Shop