

# Livermore

# Lithogram



**Volume XXXVIII, Number 4** **Livermore Valley Lithophiles**  
**April 2013** **Livermore, California**

Next General Meeting:  
 Thursday, April 11, 2013  
**Livermore Library Community Room**  
 7:30 PM

**Program:**

Next Board Meeting:  
 Thursday, April 25, 2013  
**At the Shop**  
 Members are welcome to attend!

**Meeting Location:** Livermore Library Community Room 'A'

**Refreshments:** Jane Crone and Albert Hess

<b>MEMBERS DUES ARE DUE</b>	
<i>Inside this issue:</i>	
<b>General Meeting Minutes Mar 14</b>	<b>2</b>
<b>Board Meeting Minutes Mar 28</b>	<b>3</b>
<b>The Beading Bunch</b>	<b>4</b>
<b>Alaskan Volcanoes - Part 4</b>	<b>5</b>
<b>School Report</b>	<b>6</b>
<b>Shop Report</b>	<b>7-8</b>
<b>Field Trip Black Diamond Mine</b>	<b>9-10</b>
<b>Shows &amp; Events &amp; Field Trips</b>	<b>11</b>

**Presidents Message:**

Awesome April Lithophiles! I hope to see you at the April general meeting. Our program for the April meeting is a cool DVD on mining in Columbia. We watched a similar DVD on Bolivia in March and it was fantastic, so I know that this one will be equally excellent.

The field trip to Black Diamond Mines in Antioch is scheduled for April 20. The club has booked a tour for 15 people and there are still a few spots left so let Bill Beiriger or me know if you want to go. The cost is \$5.00. We'll have a tour of the mine, followed by a picnic with all the Lithophiles who attend. We plan to carpool to save on parking fees, so plan to leave the Barn in Livermore at 9:30 to arrive in time for the 11:00 tour. We'll have a picnic lunch afterward, so be sure to bring your lunch.

The planning for the wire-wrap jewelry class is progressing. Stephanie is working with the sign-up information to find a date that works for the most people. Look for more information in future Lithograms. The fee is \$15, plus you'll need to buy some tools (pliers, etc.). Contact Stephanie if you're interested in the class and

**Presidents Message - cont. pg. 4**

**Minutes of the General Meeting**

March 14, 2013

The meeting was called to order at 7.37 PM by President Rich Hunt at the Livermore Library Community Room A.

**Guests:** - Mr. Eduard Shekhnovsky, from Pleasanton, joined the Club at the meeting.

**Correspondence:** - A few show flyers and brochures.

**Minutes:** The minutes were approved as corrected. The Federation was referred to as "CFMF" instead of CFMS.

**Treasure's Report:** Shelley Buchberger, Club Treasurer, gave a verbal report of balances and expenditures. Bill Beiriger announced that the Club's rental fee for the Shop was finally submitted by LARPD and in addition they also submitted the fee for the Barn for this year's Lithorama.

**Shop Report:** The Shop has been busy recently with 5 or 6 members working on projects.

**Schools:** Bill Beiriger reported that his school talks are starting to "calm down." He has recently given talks to Webelos Scout groups at the Mormon Church and Sunset School. Possible talks for the charter school may be on the horizon.

**Field Trips:** A field trip to the Black Diamond Mines is scheduled for Saturday April 20. A reservation for 15 people has been made (cost \$75). The fee for the mine tour is \$5 per person with parking at \$5 per car. Parking for EBRPD members is free.

**Wine Country Festival:** - The Wine Country Festival sponsored by Livermore Downtown, Inc. will be held on May 4<sup>th</sup> and 5<sup>th</sup>. We may still participate in the event. If we do, members may sell items at our booth for a 15% commission.

**Classes:** -Sign-up sheets were available for a wire wrapping class to be held in May or June. The "Beading Bunch" had their class on Saturday March 16. Jennifer Siders is working on a possible flint knapping class.

**Programs:** - The program for the April meeting will be a DVDs on mining in Columbia. A very interesting and entertaining DVD on mining amethyst and ametrine from locations in Bolivia was shown at the March meeting.

**Refreshments:** - Jane Crone and Albert Hess will provide refreshments for the April meeting.

The meeting broke up about 8:50pm.

Larry Patzkowski, Secretary

## Minutes of the Board Meeting

March 28, 2013

The meeting was called to order at 7:32 PM by President Rich Hunt at the Barn.

Those also in attendance included Bill Beiriger, Dick Friesen, Andrea Rodrigues, and Lee Davisson.

**Correspondence:** -Several pieces of mail were collected from the post office by Bill Beiriger. The mail included a couple of bank statements, an item from the IRS, a membership application and check, and a thank you letter from the Livermore School Board thanking us for our \$500 donation to the Livermore School District Elementary Science Specialists.

**Field Trips:** - The field trip to the Black Diamond Mine set for Saturday April 20 was discussed. We have reservations paid for a maximum of 15 people for the 11 AM underground tour. At present, we have 14 people signed up for the trip. Those wishing to car pool to the site will leave the Shop at sharply 9:30 AM. Bring a picnic lunch for after the tour. Lee Davisson plans to prepare some geology information for the *Lithogram*. Possible other field trips are being explored.

**Program:** -The program for the April meeting will be a showing of the DVD purchased at Tucson on mining in Columbia. Lee Davisson is planning a future program on decorative stone work, possibly for the June meeting. The program may be followed by a trip, on a later date, to the Rosicrucian Egyptian Museum & Planetarium in San Jose to see examples of decorative stone work.

**Shop:** - The Shop has been fairly busy. There was a discussion on the quality of cabochon work presently being done by some members. Apparently, some training may be necessary to improve the quality and appearance of the finished cabochons. The cleaning and repairing of the slab saws is being coordinated by Lee Davisson and will be scheduled probably on some Saturday in April or May; Dick Friesen will supervise this activity.

**Schools:** - Bill Beiriger reported that there has been little response from the Livermore middle schools regarding possible presentations by himself and Lee Davisson.

**Classes:** -The beading class ("Beading Bunch") has had one successful session and plans to meet the first Saturday of the month for 10 AM to 2 PM. Andrea Rodrigues stated that it is a drop in format and one is not necessarily expected to stay the 4 hours. Also, a wire wrapping class is being organized by Stephanie Goldsmith; there was a sign-up list at the last General Meeting.

**Alameda County Fair:** - Rich Hunt indicated that we may be able to have a case at the Fair; anyone interested in heading up this activity?

**4 H:** - Lee Davisson's and Rich Hunt's 4-H groups have been at the Shop and have been cutting cabochons. Methods and materials (findings) for setting the cabochons are being researched.

The meeting adjourned at 8:25 PM.

Larry Patzkowski, Secretary

**Presidents Message - cont. from pg. 1**

haven't signed up yet. If you're like me and make odd-shaped cabs, then wire-wrap is a good solution to create some jewelry from your work.

This may seem early to you, but not to me... Please start thinking about serving as a Lithophiles officer in 2014. Talk to me for details about the job. Each of your current officers will have served multiple years, so it's time for someone else to step up. Act now and get some solid on-the-job training!

-Rich Hunt

[rcjhunt@comcast.net](mailto:rcjhunt@comcast.net) 925-443-5525

**The Beading Bunch  
With Andrea Rodriquez**

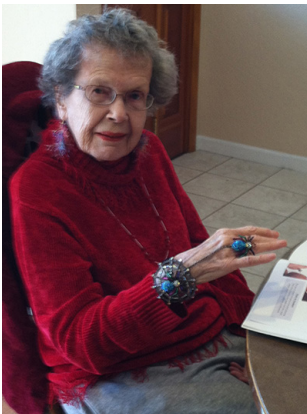
Hay Members!

**If you are interested in Beading, join the Beading Bunch.**

Next Meeting: April 6th from 10:00 - 2:00.

Location: Dick Friesen's house.

Just drop in, any time during the four hours, and check out what's going on. If you get there just before the group finishes their projects you may be able to look for the goodies that have been dropped on the floor.



Jane Crone



Pat Iannucci

## **The Volcanoes of Alaska.**

Compiled by Bill Beiriger

**Information and Photos from the Global Volcanism Program - Smithsonian Institution.**



### **Spurr - Southwestern Alaska**

**Last Eruption - 1992**

**11,069 feet**

**61.299° N 152.251° W**

The 3374-m-high summit of Mount Spurr, the highest volcano of the Aleutain arc, is a large lava dome constructed at the center of a roughly 5-km-wide horseshoe-shaped caldera that is open to the south. The volcano lies 130 km west of Anchorage and NE of Chakachamna Lake. The caldera was formed by a late-Pleistocene or early Holocene debris avalanche and associated pyroclastic flows that destroyed an ancestral Spurr volcano. The debris avalanche traveled more than 25 km to the SE, and the resulting deposit contains blocks as large as 100 m in diameter. Several ice-carved post-caldera cones or lava domes lie in the center of the caldera. The youngest vent, 2309-m-high Crater Peak, formed at the breached southern end of the caldera and has been the source of about 40 identified Holocene tephra layers. Spurr's two historical eruptions, from Crater Peak in 1953 and 1992, deposited ash on the city of Anchorage.

Photo by Christina Neal, 1993 (U.S. Geological Survey, Alaska Volcano Observatory).

<http://www.volcano.si.edu/world/volcano>



## **School Science Program**

### **By Bill Beiriger**

I had another busy month in March, but unless something changes I am finished with the schools this year.

I had two groups of Webelos Scouts during the month, one at the Mormon Church on Hillcrest and another group at Sunset School.

Student count to date for the 2012-2013 school year stands at 1130 students, at eight schools. The Scouts have totaled 69 Scouts plus 21 adults.

March 21 found me at St. Michaels School with their 5th grade class. This was a whole new presentation, I did my mineral presentation for them last year so I needed something new. I did the Rock Cycle and then one on topographic maps and how you make 3D models with the info from the maps. I finished the session on the mining history of the Tri-Valley Area.

### **Super-sized fleas adapted to feed off dinosaurs**

Earliest fossil species had armoured mouthparts to attack thick hides.

Brian Switek - Nature - February 2012

Primitive fleas were built to sup on dinosaur blood in the Jurassic period, more than 150 million years ago. The potential host-parasite relationship has been uncovered thanks to a set of beautifully preserved fossils found in China.

Today, the varied group of parasitic insects known as fleas frequently infests mammals and birds. But little is known about their origins. The flea fossil record consists mainly of modern-looking species from the past 65 million years, and the identity of possible fleas from the Cretaceous period (145 million to 65 million years ago) has been debated by experts. But Michael Engel, a palaeoentomologist at the University of Kansas in Lawrence, and his colleagues have now extended the history of the parasites by at least 60 million years. Their work is published online today in Nature1.

Engel and his co-authors studied nine flea specimens from two sites: the 165-million-year-old Jurassic deposits in Daohugou and the 125-million-year-old Cretaceous strata at Huangbanjigou, both in China. The insects were not quite like fleas as we now know them. Whereas modern fleas range from 1 to 10 millimetres in length, the Jurassic and Cretaceous species were between 8 and 21 millimetres. "These were hefty insects as far as fleas are concerned," says Engel.

But it wasn't just size that set the prehistoric species apart. The Jurassic and Cretaceous fleas lacked the spring-legged, jumping specializations of modern species, and their siphoning mouthparts were armoured structures studded with saw-like projections, unlike the smooth jaws of modern fleas.

How these traits relate to the lifestyle of the fleas is difficult to determine, says Engel, but they may indicate that the fleas were ambush specialists, which caught meals by "hiding in the periphery and then scrambling onto the host for brief periods to feed before bolting again".

What those hosts were is another question. "The mouthparts are certainly overkill for piercing the hides of early mammals and birds," says Engel. "It really appears as though they were specialized for working their way into some heavy hides, such as those on dinosaurs."

George Poinar, a palaeoentomologist at Oregon State University in Corvallis, agrees that without jumping legs, the fleas "would have to crawl or run to find a host". He adds that "they could have attacked dinosaurs or possibly pterosaurs".

But perhaps the only way to be sure would be to find fossil fleas caught in the act of feeding on dinosaurs.

## **Shop Talk**

### **By Frank Gouveia**

The shop is seeing some new faces as well as the regulars, here's what you missed if you're not one of the new faces. Before we get started I have asked all the Forepersons to write something in the "Shop Talk" composition book as well as take some pictures since I can't be there every Tuesday to record all the fun that happens down at the shop. I want to thank all the forepersons for the help in making our newsletter fun.

2/5/13 – I was substitute foreman this night for Stephanie Goldberg so I fired up the heater and waited for our Lithophiles to show up. First on the scene were Ashley Ruzicka and her mom Christy. Ashley our new member from the 4H worked on cutting some slabs on the trim saw and shaped out a cab. She even got Christy to look through the slab tub for something to work on. Lee and Josh Davisson were the next to pop in. Josh worked on a nice mossy green cab while Lee shaped a piece on the wheels into a kind of surfboard looking shape. Shawn Bentley stopped by and finished up a beautiful tear drop shaped stone she's been working on to give to her mom. I kept a close eye on everyone while I sat at the table and scraped off old varnish from some petrified wood slabs I recently purchased.

2/12/13 – I was foreman this night. Barb Johnson stopped by and after chatting with her for a while she got to work on some Rhodesite and Jasper cabs. Ashley Ruzicka worked on some cabs while her mom Christy read on her tablet and enjoyed the warmth of the heater. Dave Ruzicka (Ashley's dad) stopped by to drop off some towels for the shop and to see what the shop was all about. It turns out I know Dave from the YMCA Indian Princess program and we were members at the same time with our daughters. After a quick catching up we thanked Dave for the towels and said good bye. Carol Wilson came by and worked on her fabulous carvings. Shawn Bentley came in and finished up her small cross that fit nicely into a locket.

2/19/13 – Chris Hunt was foreperson. She reported that Irene Alstrom, Barb Johnson, Stephanie Goldsmith, Sally Castle and Shawn Bentley all showed up this night. They talked about the Antioch show last weekend and worked on the wheels. Chris took some pictures of the ladies working.

2/26/13 – Diana Carey was foreperson this night. Diana reported that Lynn came as well as Dick Friesen. Stephanie Goldsmith was there and four other people were working in the shop.

That's all from the shop...Rock on!

The Shop is open from 7pm to 10pm every Tuesday. Contact Albert Hess if you would like to come in early on any given Tuesday he can open the shop around 3pm.

Shop Forepersons:

1<sup>st</sup> Tuesday – Stephanie Goldsmith

2<sup>nd</sup> Tuesday – Frank Gouveia

3<sup>rd</sup> Tuesday – Chris Hunt

4<sup>th</sup> Tuesday – Diana Carey





## April 20th Field Trip Important Information

### Black Diamond Mines Regional Preserve

We are planning a Field Trip to the Black Diamond Mines on April 20th. We have reservations for the 11:00 AM tour. The tour is limited to 15 people. If interested please call Bill Beiriger (443-5769) or Rich Hunt (443-5525). There is a \$5 per person charge for the tour, plus there is a \$5 per car parking charge. The parking is free to individuals with a EBRPD membership. Please bring money to the March or April meetings.

**All Money Must be Given to Rich Hunt or Bill Beiriger By the April 11 Meeting.**

We plan to have lunch and do a few other things while we are there. If you do not want to go underground there will be areas you can explore while the rest of the group takes the tour. There is no charge, except parking, if you don't go underground.

**Please read the rest of this info sheet before you decide on the underground part of the trip.**

#### Hazel-Atlas Mine Tour

Explore 950 feet of an underground silica-sand mine and learn its history, geology, and the methods used to mine the sandstone. Hard hats and flashlights are provided. Participants must be ambulatory and capable of a 1/3-mile uphill walk from the parking lot to the mine. **Claustrophobia** may be a consideration because of the confined underground setting. Tours last approximately 90 minutes and you will walk about 950 feet underground.

**Wear suitable clothing suitable for underground temperatures of 55-58 degrees and footwear suitable for uneven walking surfaces.**

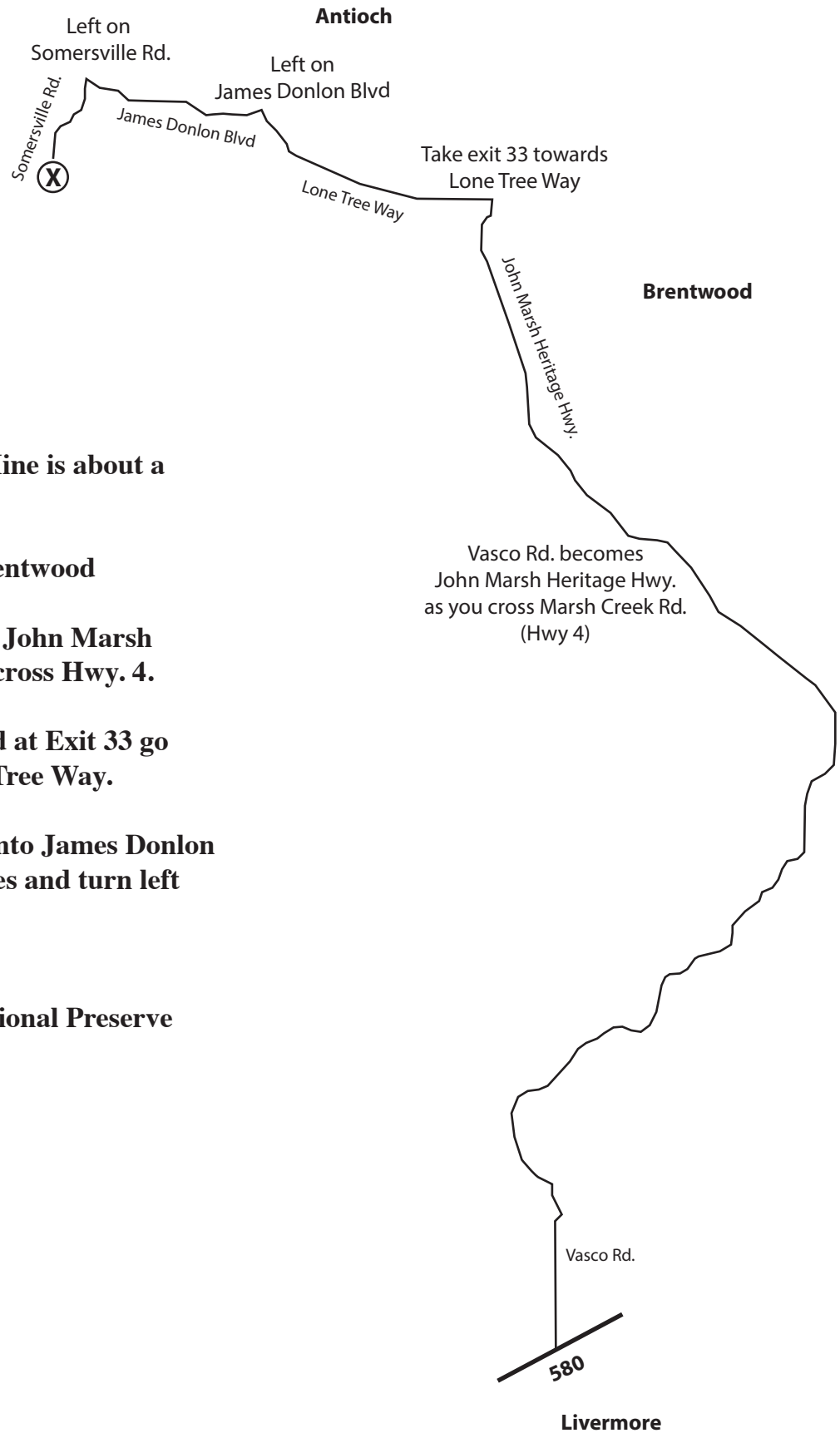
**PLEASE ARRIVE AT LEAST 10 MINUTES EARLY AND ALLOW 15 MINUTES TO WALK THE 1/3 MILE WALK from the upper parking lot.**

**MEET AT THE HAZEL-ATLAS PORTAL.** Trail signs lead the way from the upper parking lot to the Hazel-Atlas Mine.

**DOGS ARE NOT ALLOWED ON THE MINE TOURS.**

**SEE DRIVING INFORMATION AND MAP ON NEXT PAGE.**

## Driving directions to Black Diamond Mines Regional Preserve



**From Livermore to B.D. Mine is about a 50 - 60 minute drive.**

**Take Vasco Rd. toward Brentwood**

**At 18 miles Vasco becomes John Marsh Heritage Hwy. just as you cross Hwy. 4.**

**Continue about 5 miles and at Exit 33 go west and proceed to Lone Tree Way.**

**Go 4 miles and turn Left onto James Donlon Blvd. continue about 3 miles and turn left onto Somersville Rd.**

**Watch for signs to Black Diamond Mines Regional Preserve**

# California Shows And Events

## 2013

**April 13 - 14:** Mariposa, CA  
**Mariposa Gem & Mineral Club**, Mariposa  
 County Fairgrounds  
 Hwy 49 South (1.8 miles south of Mariposa),  
 Hours: 10 - 5 daily  
 Contact: Chel, (209) 742-7625, Email:  
 mineralmuseum@sti.net

**April 20 - 21:** San Jose, CA  
**Santa Clara Valley Gem & Mineral Society**,  
 Santa Clara County  
 Fairgrounds 334 Tully Road,  
 Hours: Sat 10 - 6; Sun 10 - 5  
 Contact: Frank Mullany, (408) 265-1422  
 Email: info@scvgms.org, Website: www.  
 scvgms.org

**April 27-28:** Santa Cruz, CA **Santa Cruz  
 Mineral and Gem Society** Santa Cruz Civic  
 Audition Center Street and Church Street  
 Hours: 10-5 daily  
 Contact: Julia Cornblatt, 31-687-0509  
 Email: scruzmgs@gmail.com  
 Website: www.scmgs.org

**May 4-5:** Paso Robles, CA **Santa Lucia  
 Rockhounds** Pioneer Park and Museum 2010  
 Riverside Avenue Hours: 9-5 daily  
 Contact: Kim Noyes, 805-610-0603  
 Email: kimnoyes@gmail.com  
 Website: www.slockhounds.org

**May 11 - 12:** RENO, NV  
**Reno Gem & Mineral Society**  
 Reno-Sparks Livestock Event Center  
 1350 N. Wells Avenue  
 Hours: 10 - 5 daily  
 Contact: Steve Norman, (775) 358-  
 7322, cell (775) 560-4782  
 Email: snorm11@hotmail.com  
 Website: www.renorockhounds.com

**May 31-June 2: Ventura, CA**  
**CFMS Federation Show**  
 Ventura Co. Fair Grounds  
 10 W. Harbor Blvd., Ventura, CA  
 Fri.,-Sat., 10 - 5; Sun., 10 - 4  
 Contact Rob Sankovich 805-494-7734  
 e-mail: rmsorca@adelphia.net

**November 23 & 24, 2013** Livermore  
 LITHORAMA 2013 Show and Sale,  
**Livermore Valley Lithophiles Gem  
 & Mineral Society**; The 'BARN'  
 3131 Pacific Ave. east of Livermore  
 Ave.  
 Hours: Sat. 10-5; Sun. 10-4. Visit us  
 at our website www.lithophiles.org

**MEMBERS  
 DUES ARE DUE**

Show information is available at the Cali-  
 fornia Federation of Mineralogical Societies  
 website: www.cfmsinc.org

**Additional Resources:**

**American Federation of Mineralogical  
 Societies website: www.amfed.org**

**American Lands Access Association  
 website: www.amerlands.org**

**CO-OP website: www.coop.freeservers.com**

## Field Trips

**Black Diamond Mines Regional Preserve - April 20th.  
 See pages 9 & 10 for more information.**

## Livermore Valley Lithophiles

Bill Beiriger, Editor  
P.O. Box 626  
Livermore, CA 94551-0626  
info@lithophiles.com

We're on the Web at [www.lithophiles.org](http://www.lithophiles.org)

**MEMBERS  
DUES ARE DUE**



## Elected Officers and Club Information

### Elected Officers:

**President** Rich Hunt (925) 443-5525  
**V. President** Lee Davisson (925) 371-0699  
**Secretary** Larry Patzkowski (925) 426-7768  
**Treasurer** Shelley Buchberger (925) 292-7122

**Membership:** The Livermore Valley Lithophiles invites to its membership anyone genuinely interested in minerals, gems, lapidary, geology or any of the other earth sciences, and who desires association with others of like interests. Membership in our club consists of three classes: Senior, anyone eighteen years or older; Junior, anyone under eighteen; and Honorary. Dues are for the calendar year and are as prescribed in the by-laws, Article III. \$25.00 per family, \$20.00 per individual and \$10.00 for Juniors (twelve and older.)

**Meetings:** General Meeting – Second Thursday of each month, 7:30 p.m. (**Locations change goto Lithophiles WEB-SITE**). Board Meeting – Fourth Thursday of each month, 7:30 p.m. at the Club Shop or to be announced in the *Lithogram*. Any special meetings or places will be published in the *Lithogram*.

**Club Shop:** The shop at the Barn is open to club members 7:00 p.m. to 10:00 p.m.. on Tuesday nights. If no one arrives by 7:30 p.m.. or if the Shop Foreman has not been informed a member will arrive late, then the shop will close at 7:30 p.m. Shop Foreman, OPEN.

**Field Trips:** Location and date will be published in the *Lithogram*.

**Bulletin:** *Livermore Lithogram*. Published monthly and mailed or emailed to active members and guests. News of interest, reports and articles must be received by the first Tuesday of the month. Articles may be reprinted by giving proper credit.

**Editor:**  
Bill Beiriger,  
Livermore, CA 94551-0626,  
email: info@lithophiles.com

**Shop open every Tuesday at 7:00 PM**

**General Meeting April 11th, at 7:30 PM  
Board Meeting April 25th, 7:30, At the SHOP**