

# Livermore



# Lithogram

**Volume XXXX, Number 2** **Livermore Valley Lithophiles**  
**February 2015** **Livermore, California**

Next General Meeting:  
 Thursday, Feb. 12, 2015  
 Community Room  
 7:30 PM

**Program:**  
**Stephanie Goldsmith:**  
**Will talk about the mines she has visited.**

Next Board Meeting:  
 Thursday, Feb. 26, 2015  
**At the Shop**  
 Members are welcome to attend!

**Meeting Location:** Livermore Library Community Room

**Refreshments:** Frank Gouveia & Jill Heinke

<b>DUES ARE DUE.</b>	
<i>Inside this issue:</i>	
<b>General Meeting - Minutes</b>	<b>2</b>
<b>Board Meeting - Minutes</b>	<b>3</b>
<b>Denver Museum of Nature</b>	<b>4</b>
<b>School / Scouts Report</b>	<b>5</b>
<b>Beading Buddies</b>	<b>6</b>
<b>California Geological Survey</b>	<b>7</b>
<b>Shop Report</b>	<b>8-9</b>
<b>Kaleidoscope Jasper</b>	<b>10</b>
<b>Shows &amp; Events &amp; Field Trips</b>	<b>11</b>

**Presidents Message:**  
**The Generational Gap**

We have been using this term for decades to describe the gulf separating the interests of youth and those of adults. I think we all recognize how this is dramatically displayed in many rock and mineral clubs. The lapidary arts were a popular hobby several decades ago but has seen decline since. It used to attract younger people interested in craft-based activities. Now youth are much more apt to migrate toward digital-based hobbies such as computer games. It is easy to blame the computer age for the decline in hands-on, outdoor type of recreational activities, but I argue clubs who have experienced decline in young members (and there are many of them) are just as much at fault.

Adolescents and teens today actually don't think like us, nor do I doubt they ever will. They are consumed with social media, online gaming, and sports. I have three teens myself, all good students, but I have at times watched them develop an ability to successfully navigate three different digital activities at the *same time*, for example, texting, watching a video, and reading online. They are participating in a generational experience in the digital age that will help them be successful in a competitive world. They are the multi-task generation.

The lapidary arts have done a poor job tapping into this generational experience. The attraction for most of us is starting with a raw earth material and turning it into something beautiful for use or display.

## **Minutes of the General Meeting**

### **January 8, 2015**

3 guests – Richard and Oscar; Joe Rily, Tom Johnson is now our Vice President.

**Lithogram question** – Where is the only diamond mine in the United States? - (Frank answered) Arkansas

#### **Shop Report:**

Please clean wheels after using.

#### **School Report:**

Bill Beiriger did 4 classes at Sunset Elementary School today. He will do a presentation at a Cub Scout Pack meeting tomorrow night.

2<sup>nd</sup> grade classes – dinosaurs, 4<sup>th</sup> grade classes – elements and minerals, 3 types of rocks  
February 26, 2015 – Science Odyssey at Junction School

#### **Treasurer Report:**

Bill Bish reminded everyone to pay their dues for 2015. Membership cards are available and can be used for discounts at JoAnne's and Aaron Brothers.

#### **Beading Buddies:**

Next meeting is Saturday, January 17, 2015

#### **General Meeting Program:**

February Meeting – Stephanie will talk about the mines she has visited.  
March Meeting – Flint Knapping

#### **Refreshments:**

Frank and Jill will provide the snacks for the February 12th meeting.

### **Presidents Message - continued from pg. 1**

The lapidary arts have done a poor job tapping into this generational experience. The attraction for most of us is starting with a raw earth material and turning it into something beautiful for use or display. Young people perform the same creative process but with electrons instead! Twenty years from now shaping or constructing materials by hand may be replaced by computer design and 3-D printing. Electronic technology is and will be dominating the world of hobbies.

OK, so if I'm right about defining the problem for youth participation in our clubs, then what's the solution? I'm not going to pretend that I have them all, but here's a few. Firstly, community and educational outreach are essential. This includes schools, kid fairs, community classes, etc. This needs to be practiced routinely and consistently, adapting and improving to suit the audience. In parallel it seems to me that we should be reaching out with communication tools tailored to younger people. This includes attractive and interactive websites, Facebook, Twitter, and Youtube videos. The key is to draw in younger members and let them figure out how to evolve the hobby to suit their generational interests. Our job as older adults is to be a source of knowledge and experience and support their creative ideas.

That's my sermon for the month. If anyone would like to discuss or debate this further please feel free to contact me.

## Minutes of the Board Meeting November 24, 2014

647 people attended the Lithorama.

**Suggestions** for future Lithoramas:

Demonstrations – have a bulletin board at entrance with map of Barn.

4-H Club – teach them how to demonstrate their skills; move them to different table.

Kitchen – Andrea retiring from job. Connie Dubea volunteered to take over kitchen.

Hot dogs and pies sold out, and some cake leftover.

**Treasurer** – Bill Bish proposed for club to pay for fossils used in classrooms; seconded and passed. Will be \$250.

## Minutes of the Board Meeting January 22, 2015

**Present:** Lee Davisson, Tom Johnston, Bill Bish, Bill Beiriger, Molly Akexander

The form to renew the Livermore Business License of the Lithophiles will be turned in tomorrow by Molly Alexander. Because we are a non-profit group, there is no fee.

### Shop

The cabinets will be mounted on the walls in the shop this Saturday, January 24, 2015.

### Schools

Science Odyssey will be Thursday, February 26, 2015 at Junction Avenue School.

### Field Trip (Not Sponsored by LVL)

On Sunday, February 8, 2015, there will be a field trip to Los Vaqueros Reservoir by the **Northern California Geology Society**. This is a NON COLLECTING TRIP and requires a hike of 8 1/2 miles. If interested, talk to Bill Beiriger.

Future field trips – the Petrified Forest in Sonoma County was suggested.

## IMPORTANT LOS VAQUEROS RESERVOIR FIELD TRIP

### MUST CALL BY FRIDAY, FEB. 6 - HEAVY RAIN CANCELS

SUN., FEB. 8 LOS VAQUEROS MORTAR MADNESS, (south entrance by Livermore) 8:30 Meet @ Los Vaqueros Marina, 9990 Los Vaqueros Rd., Byron. \$4.00-\$6.00 entrance fee per car. Hike 8.5 miles roundtrip, 600' gain/loss, on Adobe & Miwok trails to visit 3 Native American village sites with over 500 mortars. Sticks your preference. Restrooms only at hike's start. Heavy rain cancels. ALL HIKERS must call by Friday, Feb. 6 to arrange rides.

LEADERS: **John Christian 510-540-1008**

**DUES ARE DUE.**

## Geological Museums in the United States and Canada.

### Denver Museum of Nature and Science - Denver, CO

Compiled by Bill Beiriger

The museum has 500,000 square feet of space.

Travel through 3.5 billion years of time. See how life diversified as you move beneath ancient seas with fearsome fish and waving sea lilies water. Then travel through the air filled with huge dragonflies and come down to earth live among the foot-long centipedes and then enter the world of the dinosaurs.

Learn how the Earth has gone through periods of warming and cooling and learn how life, both plant and animal, has adapted to the changes in the climate.

Then enter the world of the Ice Age and learn about mammoths, mastodons, giant ground sloths saber-toothed cats and more.

Look into the Laboratory of Earth Sciences and see how fossils are prepared after they arrive from the fields until they are ready for display.

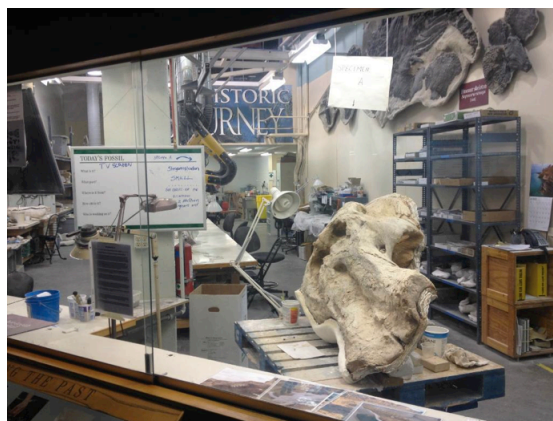
The Denver Museum also has a wonderful mineral collection.



Allosaurus and Stegosaurus battle.



The Land of the Ice Age



Laboratory of Earth Sciences

## School Report

### Bill Beiriger

I have started giving my presentations to the 2nd and 4th grade students for 2015.

January 8th found me at Sunset School in Livermore. I gave my rock and mineral presentation to about 114 4th grade students, this was a four class back to back series of talks, I was glad I didn't have a fifth class because my voice was gone by the end.

On January 14th I gave a fossil presentation for a group of, five classes, of 2nd grade students in a single sitting at Valley View School in Pleasanton. There were about 145 students, I could not have asked for a better group of students, even with 145 individuals they were well behaved.

Then on January 9th I had 10 scouts from Troup 914. One of the adults with the scouts was Jim Arnold of the Lithophiles.



**Bear and Webelos Scouts Troop 914**  
**January 9, 2015**

### London's Natural History Museum - Note:

If any of you have visited the London Museum you would have been greeted by 'Dippy the Diplodocus' well he is going back into storage and will be replaced by a 'Blue Whale', so good by Dippy. Dippy was purchased in 1891 for £250 it has been on public display since 1935.



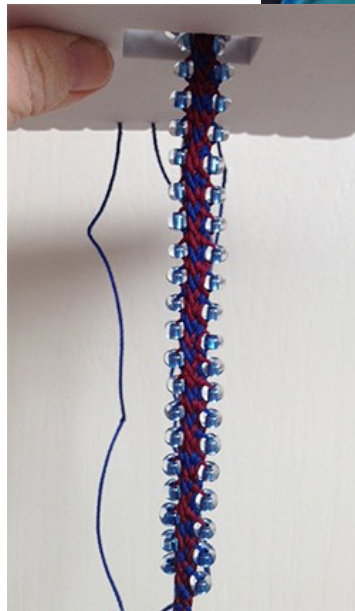
## Beading Buddies January 3, 2015 and January 17, 2015

Learning to do flat kumihimo on the square disk by watching a You Tube video.



January 3 Session.  
Andrea, Chris, Eric, Jill,  
Kris, Pat, Sue

January 17 Session.  
Andrea, Chris, Eric, Jill, Mary Kay,  
Pat, Sharon, Sue



Mary Kay & Chris  
'Learn the Kumihimo'



Sue finished her right angle weave bracelet.

**Geologic Facts about California**  
**California Geological Survey (CGS)**  
**This Information is from the 150th Anniversary of the CGS**

In 1700, the M9.0 Cascadia Subduction Zone earthquake caused a tsunami 18 meters (50 feet) high along California's north coast.

A tsunami generated in the Aleutian Islands in 1946 caused flooding 363 meters (1000 feet) inland at half Moon Bay.

The M9.2 Alaska earthquake of 1964 caused a tsunami 7.2 meters (20 feet) high that flooded 29 city blocks in Crescent City and killed 12 people statewide.

Clear Lake was formed when a large landslide blocked its outlet to Cold Creek. It is the largest natural fresh-water lake in the Coast Ranges.

Evidence of recent volcanic activity is present at several locations in California including: Lassen Volcanic National Park; the Long Valley Caldera, Mono Craters, and the Coso Volcanic Field; Mt. Shasta and the Modoc Plateau; The Geysers and geothermal hot springs area near Clear Lake; and the Salton Sea.

California's most recent volcanic eruptions occurred at Lassen Peak between 1914 and 1921.

Devils Postpile National Monument, near Mammoth Mountain, is a display of the polygonal fracture pattern typical of basalt flows as they crystallize and cool into columns.

The Sutter Buttes, in the Sacramento Valley, were created by volcanic activity that occurred between 1.6 million and 1.3 million years ago. A thick layer of sediments in the center of Sutter Buttes indicates a crater lake was once present.

The Petrified Forest west of Calistoga contains petrified wood that was buried in volcanic ash.

Historically, California has been a significant producer of the following metals: gold, mercury, and tungsten. It has also produced copper, iron, lead, zinc, antimony, chromite, manganese, titanium, silver, platinum and molybdenum.

California also produces industrial minerals including: sand and gravel, crushed stone, limestone (for cement), clays, borates, rare-earth elements, and saline compounds (salt).

The first known discover of gold in California was in the 1770s at the Potholes in Imperial County.

Gold was discovered at Coloma in 1848. The Gold Rush of 1848 and the subsequent influx of settlers led to California becoming the 31st state of the Union in 1850.

Since 1848, California has produced about 120 million ounces (more than 8 million pounds) of gold. This would make a cube about 19 feet on a side.

## Shop Report

### Frank Gouveia

With the mild weather we had in January the shop has seen a steady stream of members stopping by to hone their skills.

The past month has seen several new members joining as well as some old familiar faces coming back home to an ever improving shop.

The latest improvements are the new shop cabinets that were hung on the walls above the polishing wheels. Thanks to Pat I. for thinking of us before getting rid of her old kitchen cabinets. The cabinets were hung on the same day as the rummage sale going on at the Barn which made it a bit of a challenge to find parking, a place to work on the cabinets and getting them out of the storage area but we managed. Occasionally we would have to go next door to find someone who had sneaked off to do some shopping in the Barn. Those who helped included Club President Lee Davisson and his son Josh, Vice President Tom Johnston, Treasurer Bill Bish, Editor Bill Beiriger, former President Rich Hunt and Shop Foreman Frank Gouveia. We were able to get all the cabinets hung in about 3 hours with no injuries.

With these new cabinets up storage and ongoing organization of the shop can continue.

I'd like to thank everyone who has helped making the shop a nicer place and look forward to seeing more of you come down and use the facility in the New Year.

If you would like to use the shop earlier than 7pm contact Richard Ochoa for his early bird days.

That's all from the shop...Rock on!

**The Shop is open from 7pm to 10pm every Tuesday.**

Shop Forepersons:

1<sup>st</sup> Tuesday – Stephanie Goldsmith

2<sup>nd</sup> Tuesday – Frank Gouveia

3<sup>rd</sup> Tuesday – Tom Johnston

4<sup>th</sup> Tuesday – Richard Ochoa

5<sup>th</sup> Tuesday- Mystery Guest Foreman....Ooooooh!





The Cabinet Hanging Crew

L-R Tom Johnston, Bill Bish, Frank Gouveia, Bill Beiriger, Lee Davisson, Rich Hunt and Josh Davisson

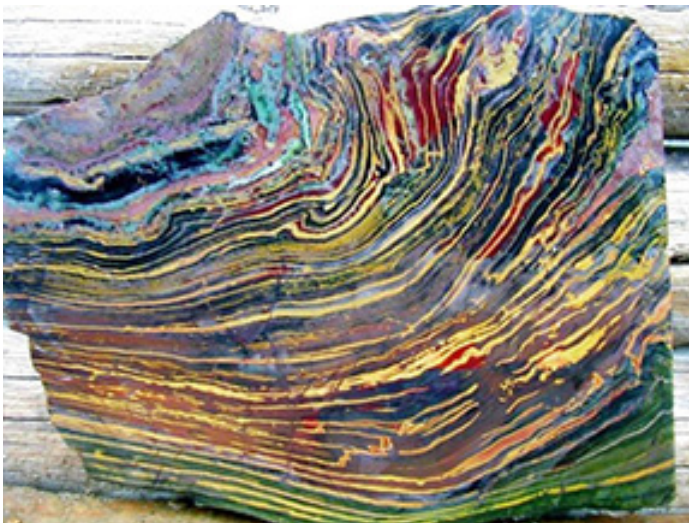
## Kaleidoscope Jasper Oregon

Found in Oregon during the Winther of 2006 / 2007.

The first webpage is the Home Page for the Mine, thr second webpage is a Shoping Page showing material that is for Sale.

<http://www.kaleidoscopejaspermines.com/about/>

<http://www.kaleidoscopejaspermines.com/shop/>



# California Shows And Events

## 2015

### QUARTZSITE, AZ

January 01 - February 28, 2015 Desert Gardens  
-Gem & Mineral

### February 28 - March 1: VALLEJO, CA

#### Vallejo Gem & Mineral Society

Solano County Fairgrounds, Mc Cormack Hall  
900 Fairgrounds Drive  
Hours: 10:00 - 5:00 daily  
Contact: Dan Wolke, 707 334-2950  
Email: dncwolke@sbcglobal.net  
Website: www.vjgems.org

### March 6 - 8: NEWARK, CA

#### Mineral & Gem Society of Castro Valley

Newark Pavilion  
6430 Thornton Avenue  
Hours: Fri & Sat 10 - 6; Sun 10 - 5  
Contact: Cathy Miller, (510) 887-9007  
Website: www.mgscv.org

### March 14 - 15: TURLOCK, CA

#### Mother Lode Mineral Society, Modesto

Stanislaus County Fairgrounds  
900 North Broadway  
Hours: 10 - 5 daily  
Contacts: Bud & Terry McMillin, (209) 524-3494, cell (209) 484-4416  
Email: terry\_mcmillin@yahoo.com  
Website: www.turlockgemshow.com

### March 28 - 29: ROSEVILLE, CA

#### Roseville Rock Rollers

Roseville (Placer County) Fairgrounds  
800 All American City Blvd  
Hours: Sat 10 - 5; Sun 10 - 4  
Contact: Gloria Marie, (916) 216-1114  
Email: gloriarosevillerockrollers@gmail.com  
Website: www.rockrollers.com

### April 4 - 5: CHICO, CA

#### Paradise Gem & Mineral Society

Silver Dollar Fairgrounds  
2337 Fair Street  
Hours: 10 - 4 daily  
Contact: Manuel Garcia, (530) 877-7324  
Website: www.paradisegem.org

### April 18 - 19: SAN JOSE, CA

#### Santa Clara Valley Gem & Mineral Society

Santa Clara County Fairgrounds  
334 Tully Road  
Hours: 10 - 5 daily  
Contact: Frank Mullaney, (408) 265-1422  
Email: info@scvgms.org  
Website: www.scvgms.org

### April 25 - 26: SANTA CRUZ, CA

#### Santa Cruz Mineral & Gem Society

Santa Cruz Civic Auditorium  
Church Street & Center Street  
Hours: 10 - 5 daily  
Contact: Dean Welder (408) 353-2675  
Website: www.scmgs.org

### CALIFORNIA FEDERATION MINERALOGICAL SOCIETIES

76th Annual

#### SHOW & CONVENTION

Friday, Saturday & Sunday  
JUNE 12 - 14, 2015  
Friday & Saturday: 10:00 - 5:00  
Sunday: 10:00 - 4:00  
413 East Lockeford Street  
Lodi, California

### November 21-22: LIVERMORE, CA

#### Livermore Valley Lithophiles

Lithorama 2015 is a Gem and Mineral Show and Sale & will be held at the 'BARN' in Livermore, 3131 Pacific Ave., off South Livermore Ave.

Saturday 10:00 to 5:00  
Sunday 10:00 to 4:00  
info@lithophiles.com  
www.lithophiles.org

Show information is available at the California Federation of Mineralogical Societies website: [www.cfmsinc.org](http://www.cfmsinc.org)

#### Additional Resources:

American Federation of Mineralogical Societies website: [www.amfed.org](http://www.amfed.org)

American Lands Access Association website: [www.amerlands.org](http://www.amerlands.org)

CO-OP website: [www.coop.freeservers.com](http://www.coop.freeservers.com)

## Field Trips

Several members are going to scout out a couple of possible field trip areas in Northern California and will report back to the society in the near future. These areas should offer the members a place to collect in late Spring or Early Summer.

The CFMS Show will be held June 12-14 in Lodi, there should be Field Trips as part of this event.

Watch and read more about both of these Field Trips in the next couple of months.

## Livermore Valley Lithophiles

Bill Beiriger, Editor  
P.O. Box 626  
Livermore, CA 94551-0626  
info@lithophiles.com

We're on the Web at [www.lithophiles.org](http://www.lithophiles.org)



## Elected Officers and Club Information

### Elected Officers:

**President** Lee Davisson ( [leedavisson@sbcglobal.net](mailto:leedavisson@sbcglobal.net) )  
**V. President** Tom Johnston ([tj5646@gmail.com](mailto:tj5646@gmail.com))  
**Secretary** Molly Alexander (925) 606-6977  
**Treasurer** Bill Bish ( [bcbish@att.net](mailto:bcbish@att.net) )

**Membership:** The Livermore Valley Lithophiles invites to its membership anyone genuinely interested in minerals, gems, lapidary, geology or any of the other earth sciences, and who desires association with others of like interests. Membership in our club consists of three classes: Senior, anyone eighteen years or older; Junior, anyone under eighteen; and Honorary. Dues are for the calendar year and are as prescribed in the by-laws, Article III. \$25.00 per family, \$20.00 per individual and \$10.00 for Juniors (twelve and older.)

**Meetings:** General Meeting – Second Thursday of each month, 7:30 p.m. Civic Center Livermore Library Community Room (**Locations change goto Lithophiles WEB-SITE**). Board Meeting – Fourth Thursday of each month, 7:30 p.m. at the Club Shop or to be announced in the *Lithogram*. Any special meetings or places will be published in the *Lithogram*.

**Club Shop:** The shop at the Barn is open to club members 7:00 p.m. to 10:00 p.m.. on Tuesday nights. If no one arrives by 7:30 p.m.. or if the Shop Foreman has not been informed a member will arrive late, then the shop will close at 7:30 p.m. Shop Foreman, Stephanie Goldsmith (925) 447-1722.

**Field Trips:** Location and date will be published in the *Lithogram*.

**Bulletin:** *Livermore Lithogram*. Published monthly and mailed or emailed to active members and guests. News of interest, reports and articles must be received by the first Tuesday of the month. Articles may be reprinted by giving proper credit.

**Editor:**  
Bill Beiriger,  
Livermore, CA 94551-0626,  
email: [info@lithophiles.com](mailto:info@lithophiles.com)

**Shop open every Tuesday at 7:00 PM**

**General Meeting Feb. 12, at 7:30 PM**  
**Board Meeting - Feb. 26, 7:30 PM**