

# Livermore



# Lithogram

Livermore Valley Lithophiles

Livermore, CA

## Next General Meeting

**Feb. 9th, 2016****6:00 pm**Community Room  
Civic Center Library

**Program:** Johanna Fenton, her jewelry features natural gemstones with sterling silver, gold-filled, or gold vermeil accent beads. (More info on page 3)

**Refreshments:** Bill & Connie Bish

## Next Board Meeting

TBA.

All Members are welcome to attend!

### *Inside this issue:*

Lithorama Report	1
State Fossils	2
Minutes	3
Beading Buddies	4
Lithorama Photos	5
Shows & Events	6

## Monthly Mineral - Sugilite

by Lee Davisson

Sugilite is a cyclosilicate, which is a mineral with a silicon to oxygen ratio of 1:3, same as in benitoite. Sugilite has a number of different elements joined to the silicate framework, but it's manganese that imparts the brilliant purple color to the mineral. In 1979 a rich source of sugilite was introduced to the market derived from the Kalahari Desert of South Africa. Here the sugilite occurs as part of a large and thick manganese-rich stratiform deposit over 2 billion years old. Stratiforms are bedded layers of hydrothermal deposits. Sugilite has a hardness around 6.5 and is a favorite for cabochon makers. It has been used in high fashion jewelry, often accompanying diamond settings. Beautiful intarsia pieces have used sugilite with malachite and other brilliant colored lapidary minerals (example: <http://www.americanmastersofstone.com/Biographies/Nicolai%20Medvedev.htm>.)



<http://serendipitycrystals.co.uk/sugilite-crystal-of/>

# State Fossils

## Kentucky State Fossil

Bill Beiriger

The state fossil is the phylum *Brachiopoda* without a specific Genus or Species.

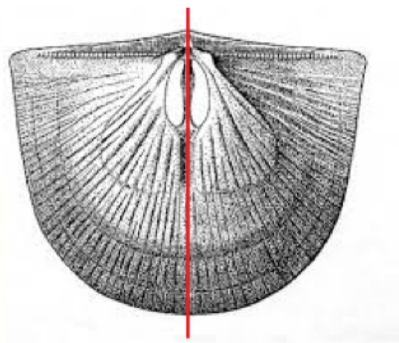
Brachiopods can be found in Ordovician, Silurian, Devonian, Mississippian & Pennsylvanian rocks in Kentucky. With the age covering 488 mya to 298 mya. There are hundreds of species of brachiopods found in Kentucky.

Today Brachiopods still live in the oceans of the world. Many Brachiopods are anchored to the seabed or an underwater boulder with the shell attached on a stalk (pedicle). Because of this stalk they can't pursue food, but have to wait for food to come to them.

Brachiopods are Bivalves that have a top and bottom valve (shell) that have a different shape.



But if a line is drawn through the center of each valve they will have mirrored image.



They became the State Fossil in 1986.

## Minutes of the Lithophile Meeting

**January 12, 2017**

No quorum = no meeting

## Minutes of the Lithophile Board Meeting

**January 26, 2017**

Present: Lee Davisson, Bill Bish, Stephanie Goldsmith, Bill Beiriger, Molly Alexander

Electrical problem in shop.

Shop upstairs – Everything has to be sorted and organized. All rocks have to be examined and junk rocks thrown out. Old cases have to be thrown out, but save the glass from each one. Need new ropes for the lift.

We need a shop foreman. When Dick Friesen returns from Arizona, have him train a few members.

Science Odyssey – February 16, 2017 at Junction Avenue School, Bill Beiriger will be doing a meteorite display and comparing it to olivine basalt.

Next Lithophile meeting February 9 – a geologist will be speaking. Bill B. and Bill B. will bring dessert.

March 9 Lithophile meeting – Bill Beiriger will discuss topographic maps.



## Johanna Fenton will be speaking at the February General Meeting

**About Johanna, or, How to play with rocks when you're an adult!**

Like most children, I had a collection of rocks – mostly unidentifiable but pretty – that were special to me. Unlike most children, my love of rocks and minerals grew as I became an adult. The interest in rocks turned into curiosity about their make up, which led me to serious study and eventually a B.S. in Earth Sciences.

Since playing with pretty rocks didn't seem like a realistic career path, I chose to do graduate studies in the field of Geotechnical Engineering and received a Masters degree from UC Berkeley in that field. This in turn led me to a career putting my education to work studying and planning for geologic hazards, including earthquakes and volcanoes. Meanwhile, my pretty rock collection continued to grow and I started to make jewelry for myself and friends. I realized that my study of minerals gave me a unique perspective on stones in the form of gems suitable for jewelry, and I started down the path of making and selling pieces myself. I started my business, Mochi's Gifts, in January, 2003.

I decided I wanted to learn more about the beautiful gems I was working with so I returned to school to learn Gemology. I completed the education and lab work required to earn my Graduate Gemologist diploma through the [Gemological Institute of America](#) in July of 2014.

### EDUCATION

Gemological Institute of America, Carlsbad, CA  
July, 2014: Graduate Gemologist

May, 2014: Accredited Jewelry Professional

Revere Academy of Jewelry Arts, San Francisco, CA  
February, 2011: Jewelry Technician

University of California, Berkeley, CA

December, 1993: Master of Science, Geotechnical

Engineering, University of Massachusetts, Boston, MA

May, 1992: Bachelor of Science, Earth Sciences

Who is the Geode Collector?



## Beading Buddies

The beading buddies will meet on Saturday February 18, 1-4pm at my house. This will be a catch up session or bring a new project of your choice.

Pat

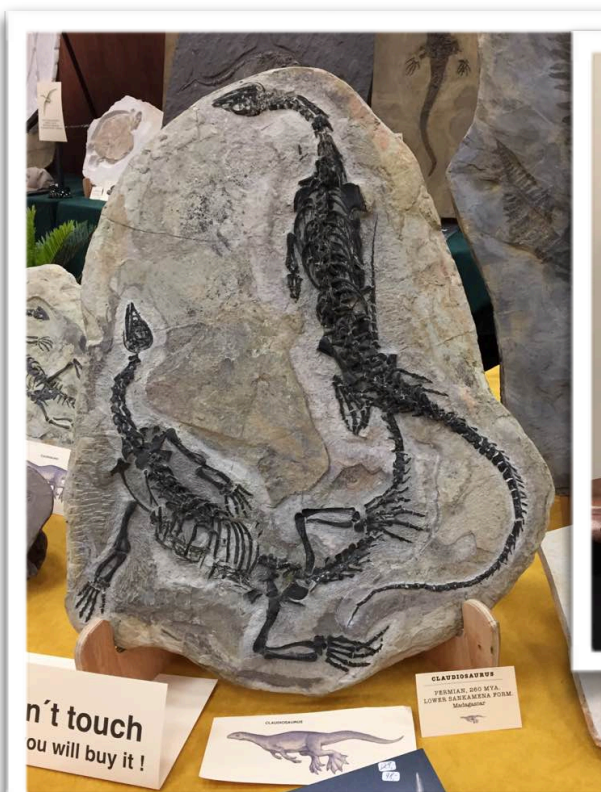


Looking for dropped beads.





# Lithophiles Out & About



Photos from Tuscon shows by Pat Iannucci



**Tiffany Opal Necklace**

necklace, designed by Louis Comfort Tiffany, features black c  
ad with brilliant green, deep red, and blue opal.

# California Shows & Events

## **February 18 - 19: ANTIOCH, CA**

Antioch Gem Club

Contra Costa County Fairgrounds

1201 West 10th Street

Hours: 10 - 5 daily

Contact: Brenda Miguel, (925) 301-6957

Email: [brenda.miguel@yahoo.com](mailto:brenda.miguel@yahoo.com)

Website: [www.antiochlapidaryclub.com](http://www.antiochlapidaryclub.com)

## **February 25 - 26: VALLEJO, CA**

Vallejo Gem & Mineral Society

Solano County Fairgrounds, Mc Cormack Hall

900 Fairgrounds Drive

Hours: 10 - 5 daily

Contact: Dan Wolke, 707 334-2950

Email: [dncwolke@sbcglobal.net](mailto:dncwolke@sbcglobal.net)

Website: [www.vjgems.org](http://www.vjgems.org)

## **March 3 - 5: NEWARK, CA**

Mineral & Gem Society of Castro Valley

Newark Pavilion

6430 Thornton Avenue

Hours: Fri & Sat 10 - 6; Sun 10 - 5

Contact: Cathy Miller, (510) 305-4196

Email: [showchair@mgscv.org](mailto:showchair@mgscv.org)

Website: [www.mgscv.org](http://www.mgscv.org)

## **March 11 - 12: SPRECKELS, CA**

Salinas Valley Rock & Gem Club

Spreckel's Veteran's Hall

5th & Llano Streets

Hours: 10 - 5 daily

Contact: Gary Beck, (831) 679-2896

Email: [garybeckpca@yahoo.com](mailto:garybeckpca@yahoo.com)

Website: [salinasrockandgem.pagecloud.com](http://salinasrockandgem.pagecloud.com)

## **March 11 - 12: TURLOCK, CA**

Mother Lode Mineral Society, Modesto

Stanislaus County Fairgrounds

900 North Broadway

Hours: 10 - 5 daily

Contacts: Bud & Terry McMillin, (209) 484-4416

Email: [terry.mcmillin@yahoo.com](mailto:terry.mcmillin@yahoo.com)

Website: [www.motherlodemineralsociety.com](http://www.motherlodemineralsociety.com)

## **March 18 - 19: SAN JOSE, CA**

Santa Clara Valley Gem & Mineral Society

Santa Clara County Fairgrounds

344 Tully Road

Hours: 10 - 5 daily

Contact: June Harris, (408) 265-1422

Email: [info@scvgms.org](mailto:info@scvgms.org)

Website: [www.scvgms.org](http://www.scvgms.org)

## **March 25- 26: ROSEVILLE, CA**

Roseville Rock Rollers Gem & Mineral Society

Placer County Fairgrounds

800 All American City Blvd (off Washington)

Hours: Sat 10 - 5; Sun 10 - 4

Contact: Gloria Marie, (916) 216-1114

Email: [gloriarosevillerockrollers@gmail.com](mailto:gloriarosevillerockrollers@gmail.com)

Website: [www.rockrollers.com](http://www.rockrollers.com)

## **March 25 - 26: ANGELS CAMP, CA**

Calaveras Gem & Mineral Society

Calaveras County Fairgrounds

101 Frogtown Road

Hours: Sat 10 - 5; Sun 10 - 4

Contact: Dave Muster (209-518-8795) or Anna

Christiansen (209-847-1173)

Email: [annachristiansen7132@comcast.net](mailto:annachristiansen7132@comcast.net)

Website: [www.calaverasgemandmineral.org](http://www.calaverasgemandmineral.org)

## **April 8 - 9: MARIPOSA, CA**

Mariposa Gem & Mineral Society

Mariposa County Fairgrounds

5007 Fairgrounds Rd/Hwy 49 So.

Hours: Sat 10 - 6; Sun 10 - 5

Contact: Meredith Meehan, (559) 868-3535

Email: [mgmc@sti.net](mailto:mgmc@sti.net)

Website: [www.camineralmuseum.com](http://www.camineralmuseum.com)

## Livermore Valley Lithophiles

Jennifer Siders, Editor  
P.O. Box 626  
Livermore, CA 94551-0626  
[info@lithophiles.com](mailto:info@lithophiles.com)

We're on the Web at [www.lithophiles.org](http://www.lithophiles.org) & [www.facebook.com/Lithophiles/](https://www.facebook.com/Lithophiles/)

---

## Elected Officers & Club Information

### Elected Officers:

<b>President</b>	<b>Lee Davisson</b> <a href="mailto:leedavisson@sbcglobal.net">leedavisson@sbcglobal.net</a>
<b>V. President</b>	<b>Stephanie Goldsmith</b>
<b>Secretary</b>	<b>Molly Alexander (925) 606-6977</b>
<b>Treasurer</b>	<b>Bill Bish ( <a href="mailto:bcbish@att.net">bcbish@att.net</a> )</b>

**Membership:** The Livermore Valley Lithophiles invites to its membership anyone genuinely interested in minerals, gems, lapidary, geology or any of the other earth sciences, and who desires association with others of like interests. Membership in our club consists of three classes: Senior, anyone eighteen years or older; Junior, anyone under eighteen; and Honorary. Dues are for the calendar year and are as prescribed in the by-laws, Article III. \$25.00 per family, \$20.00 per individual and \$10.00 for Juniors (twelve and younger.)

**Meetings:** General Meeting – Second Thursday of each month, 7:30 p.m. Civic Center Livermore Library Community Room (**Locations change go to Lithophiles WEB-SITE**). Board Meeting – Fourth Thursday of each month, 7:30 p.m. at the Club Shop or to be announced in the *Lithogram*. Any special meetings or places will be published in the *Lithogram*.

**Club Shop:** The shop at the Barn is open to club members 7:00 p.m. to 10:00 p.m.. on Tuesday nights. If no one arrives by 7:30 p.m. or if the Shop Foreman has not been informed a member will arrive late, then the shop will close at 7:30 p.m. Shop Foreman, Stephanie Goldsmith (925) 447-1722.

**Field Trips:** Location and date will be published in the *Lithogram*.

**Bulletin:** *Livermore Lithogram*. Published monthly and mailed or emailed to active members and guests. News of interest, reports and articles must be received by the first Tuesday of the month. Articles may be reprinted by giving proper credit.

### Editor:

Jenny Siders  
email: [jenny.siders@me.com](mailto:jenny.siders@me.com)