

Livermore



Lithogram

Livermore Valley Lithophiles

Livermore, CA

Next General Meeting

January 14, 2016

7:30pm

Community Room
Civic Center Library

7:30pm

Program: Video

Refreshments:

Davison & Siders

Next Board Meeting

Thursday, TBA

7:30pm at the Shop

All Members are welcome
to attend!

Time to Pay Dues!

Inside this issue:

President's Message	1
State Fossils	2
Beading Buddies	3
4H & Teens	4
Shows, Events & Fieldtrips	5

President's Message:

A New Year and a Newer Approach

As a club we have difficulty organizing and running club field trips. Like many other clubs, the old traditional collecting sites might no longer be accessible or require a fair amount of off-road driving. Furthermore, our club further has had trouble getting regular volunteers to organize a field trip and recruit members to participate. However, I've been learning something during the past few years of our Lithorama show that we tend not to get very many other clubs attending. Our show does much better at catering to kids and curious adults. But I think the obvious thing here is that in order to get other clubs to show up our members should be going to their shows more so than we have been. Accordingly, I'm going to suggest that we use regional gem and mineral shows as an excuse for club field trips and that our members coordinate and go as a group. We should also wear our new club T-shirts to identify ourselves, as well as make an effort to talk to members of the hosting club working the show if we don't already know them. I will make an effort to advertise upcoming regional shows and encourage participation and carpooling if convenient. The first show on the horizon is the Antioch show on February 20-21, followed by the Vallejo show the following weekend, so mark your calendars.



State Fossils

This is the First part of a series on State Fossils.

Alabama and Mississippi State Fossil

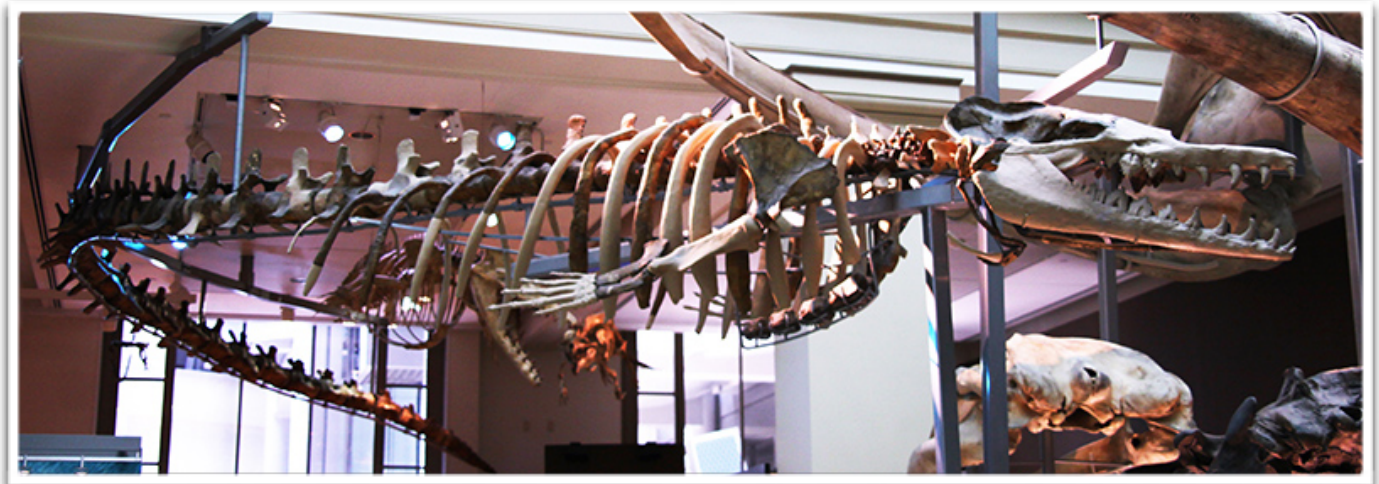
Bill Beiriger

Basilosaurus cetoides, prehistoric whale, was discovered in southwestern Alabama in 1834.

Basilosaurus (**king of the lizards**) when first found and initially believed to be a type of reptile, hence the suffix "-saurus", but later it was found to be a marine mammal. Per taxonomic rules, the creature's first name must remain the permanent name (α).

The bones of *Basilosaurus cetoides* and other primitive whales have been found throughout a geologic belt across Louisiana, Mississippi, and Alabama. These exposures of Middle and Upper Eocene marine strata are called the Moodys Branch Formation (or Marl) and the Yazoo Clay Formation.

It lived at the end of the Eocene epoch, approximately 34 to 35 million years ago. The whale was about 60 to 70 feet long and had a head that was about 5 feet long.



Basilosaurus cetoides – Smithsonian Museum

(α) Plants and Animals, living or fossilized must always keep the first scientific name assigned to them, if they are found to belong to a different group, the original name must be kept. This has happened many times over the years from the naming of microscopic to large size animals and plants. If it is found that your new animal or plant is not a new species, then you must use the genus and species name of the earlier named animal or plant.

Beading Buddies



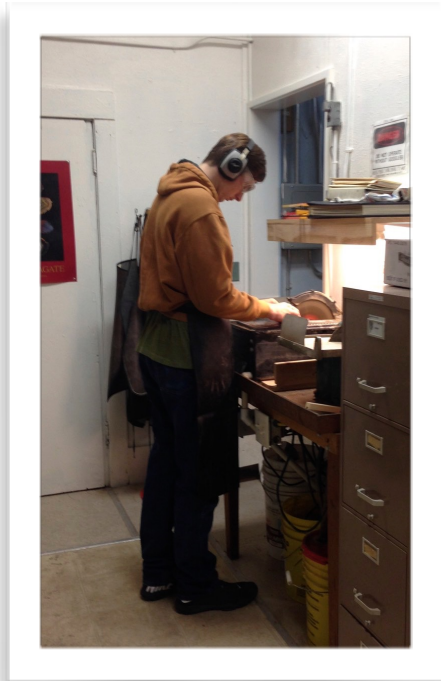
Beading buddies will meet on Saturday January 23, 1-4 pm at Pat Iannucci's house, 889 Waverly CMN, Livermore. We will be working on a new bracelet project.



4H & Teens

The 4H project has started up again and after their first meeting at the Lithorama, got to work in the shop in December. Older 4H members from previous years demonstrated how to make cabs at the Lithorama. The cabs made at the show were donated to the Children's Holiday Party, where they were given as gifts to teens or put out for the kids to pick as gifts for their parents. There are nine 4H members this year and Richard Ochoa has become the third 4H Lapidary Project Leader.

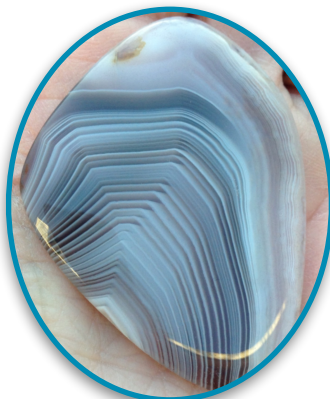
Jenny Siders continues to open the shop for teens on Tuesday afternoons from 12:30-2:20 twice a month. This time slot is predominately for a group of homeschoolers but if you'd like to use the shop on these afternoons contact Jenny to get notified of the dates. jsiders@gmail.com



Donated Cabs made by 4H members



Christian Schneider



Charles Siders



Jake Vanderzanden

California Shows & Events

UNEARTHED: Found + Made

Exhibition at the Oakland Museum of CA
 museumca.org/exhibit/unearthed-found-made
 Dec 12, 2015 - April 24, 2016

Quartzite Shows:

Tyson Wells Rock & Gem - Jan 1 - Jan 10
 Desert Gardens - Jan 1 - Feb 28
 QIA Pow Wow - Jan 20 - Jan 24

Tucson Shows:

Most Shows - Jan 30 - Feb 13
 Tucson G&M Main Show - Feb 11 - Feb 14
 Bead Shows Feb 2-7

February 20 - 21: ANTIOCH, CA

Antioch Gem Club

Contra Costa County Fairgrounds
 1201 West 10th Street
 Hours: 10 - 5 daily
 Contact: Brenda Miguel, (925) 301-6957
 Email: brenda.miguel@yahoo.com
 Website: www.antiochlapidaryclub.com

February 27 - 28: VALLEJO, CA

Vallejo Gem & Mineral Society

Solano County Fairgrounds, Mc Cormack Hall
 900 Fairgrounds Drive
 Hours: 10 - 5 daily
 Contact: Dan Wolke, 707 334-2950
 Email: dncwolke@sbcglobal.net
 Website: www.vjgems.org

March 4 - 6: NEWARK, CA

Mineral & Gem Society of Castro Valley

Newark Pavilion
 6430 Thornton Avenue
 Hours: Fri & Sat 10 - 6; Sun 10 - 5
 Contact: Cathy Miller, (510) 887-9007
 Email: showchair@mgscv.org
 Website: www.mgscv.org

March 12 - 13: TURLOCK, CA

Mother Lode Mineral Society,

ModestoStanislaus County Fairgrounds
 900 North Broadway
 Hours: 10 - 5 daily
 Contacts: Bud & Terry McMillin, (209)
 524-3494
 Email: Bud.mcmillin.b7yj@statefarm.com
 Website: www.motherlodemineralsociety.com

March 26 - 27: ANGELS CAMP, CA

Calaveras Gem & Mineral Society

Calaveras County Fairgrounds
 101 Frogtown Road
 Hours: Sat 10 - 5; Sun 10 - 4
 Contact: Robin Williams, (209) 728-8277
 Email: robinski@yahoo.com
 Website: www.calaverasgemandmineral.org

March 26- 27: ROSEVILLE, CA

Roseville Rock Rollers Gem & Mineral Society

Placer County Fairgrounds
 800 All American Blvd (off Washington)
 Hours: Sat 10 - 5 daily
 Contact: Gloria Marie, (916) 216-1114
 Email: gloriarosevillerockrollers@gmail.com
 Website: www.rockrollers.com

Livermore Valley Lithophiles

Jennifer Siders, Editor
P.O. Box 626
Livermore, CA 94551-0626
info@lithophiles.com

We're on the Web at www.lithophiles.org & www.facebook.com/Lithophiles/

Elected Officers & Club Information

Elected Officers:

President Lee Davisson
leedavisson@sbcbglobal.net

V. President

Secretary Molly Alexander (925) 606-6977

Treasurer Bill Bish (bcbish@att.net)

Membership: The Livermore Valley Lithophiles invites to its membership anyone genuinely interested in minerals, gems, lapidary, geology or any of the other earth sciences, and who desires association with others of like interests. Membership in our club consists of three classes: Senior, anyone eighteen years or older; Junior, anyone under eighteen; and Honorary. Dues are for the calendar year and are as prescribed in the by-laws, Article III. \$25.00 per family, \$20.00 per individual and \$10.00 for Juniors (twelve and younger.)

Meetings: General Meeting – Second Thursday of each month, 7:30 p.m. Civic Center Livermore Library Community Room (**Locations change go to Lithophiles WEB-SITE**). Board Meeting – Fourth Thursday of each month, 7:30 p.m. at the Club Shop or to be announced in the *Lithogram*. Any special meetings or places will be published in the *Lithogram*.

Club Shop: The shop at the Barn is open to club members 7:00 p.m. to 10:00 p.m.. on Tuesday nights. If no one arrives by 7:30 p.m. or if the Shop Foreman has not been informed a member will arrive late, then the shop will close at 7:30 p.m. Shop Foreman, Stephanie Goldsmith (925) 447-1722.

Field Trips: Location and date will be published in the *Lithogram*.

Bulletin: *Livermore Lithogram*. Published monthly and mailed or emailed to active members and guests. News of interest, reports and articles must be received by the first Tuesday of the month. Articles may be reprinted by giving proper credit.

Editor:

Jenny Siders,
email: jenny.siders@me.com