

Livermore



Lithogram

Livermore Valley Lithophiles

Livermore, CA

Next General Meeting

Aug 6, 2017

11:30 am

Mary Nissen Park

Program: Annual Picnic

Refreshments: Everyone!

Next Board Meeting

4th Thursday of the month
at the Shop.

All Members are welcome
to attend!

Inside this issue:

Annual Picnic	I
State Fossils	2
Beading Buddies	3
Minutes	4
Shows & Events	5

Lithophile Annual Picnic

Sunday, August 6, 2017

11:30am

May Nissen Park




Photo from last year's picnic.

State Fossils

Montana & New Jersey State Fossils Duck-Billed Dinosaurs

Bill Beiriger

Maiasaur peeblesorum, a Duck-billed herbivorous Dinosaur it is the Montana State Fossil. The dinosaur name means 'good mother lizard'. It lived during the Cretaceous Period 144-165 million years ago.



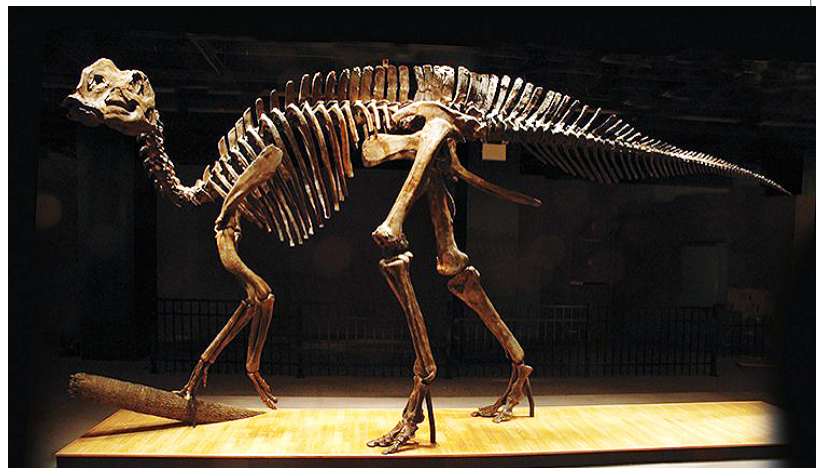
Copyright Scott Hartman, 2004.

The adults were about 30 feet in length and weighed in at 2000 pounds. They made nests that were about six feet in diameter that contained about 20 to 25 eggs.

They lead a migratory life and traveled great distance while foraging for food. Large herds of the animals have been found buried in volcanic ash.

Jack Horner and Robert Makela named the dinosaur in 1979. It became State Fossil for Montana in 1985.

Hadrosaurus foulkii lived between 80.5 and 78.5 million years ago during the Cretaceous Period. The animal was a herbivore, and was about 30 feet long and 10 feet tall.



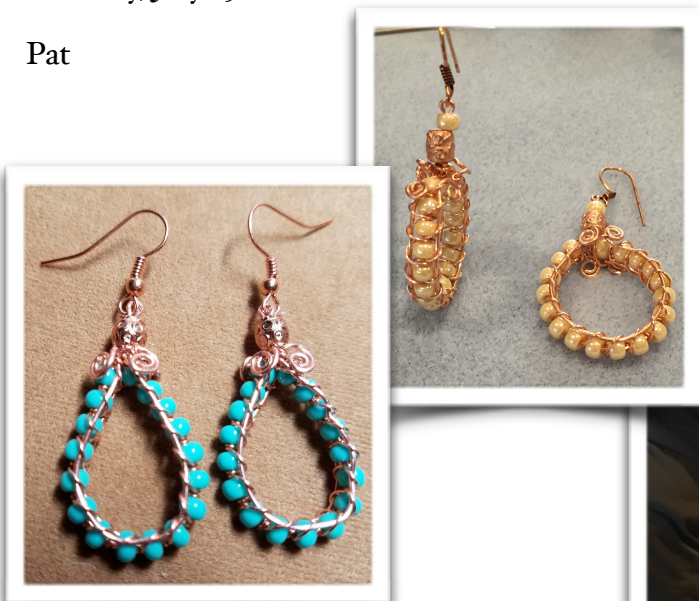
In 1838, John Estauagh Hopkins was digging in a marl pit on a small tributary of the Cooper River, where he uncovered a few bones of a large animal. In the summer of 1858, they caught the attention of William Parker Foulke, a fossil collector. Foulke began to dig at the site and recovered

the rest of the fossil that was buried at a depth of nine feet. . Only a single specimen has ever been found, but the specimen is almost a complete skeleton. It became New Jersey's State Fossil in 1991.

Beading Buddies

We had several new people come this time. Two of Andrea's fellow cruise travelers as well as a club member. This was the group's first wire jewelry project. Our next meeting is Saturday July 8 for a "Christmas in July" project. We will be making a jingle bell bracelet (photo on right). We will also be going to the Intergem bead show in San Mateo on Saturday, July 15.

Pat



Minutes of Lithophile Board Meeting

June 22, 2017

Attendees: Lee Davisson, Bill Bish, Dick Friesen, and Andrea Rodrigues.

The picnic at May Nissen Park will begin at 11:30 on August 6th. Bill Bish can't do the barbeque this year so we need a volunteer for that activity. We also need someone to organize the picnic – if you can, please let Lee know.

The Barn is rented for the Lithorama and Dick has contacted the dealers. Dick will not be able to be at the Lithorama this year. Bill Bish will finish any business with the dealers after Dick leaves. Dick will start a list of members and non-member setting up display cases. Please let Dick know if you want to do a display case this year. We discussed the need for our usual volunteers again this year. Please let Lee know if you will not be available otherwise we will assume everyone will be there. This year Bill Bish will arrange for the teachers to help with the kid's corner. Bill Beiriger will be contacted about getting the banner and cards for this year.

The board looked at a locally purchased cable and connectors to replace the very old ropes on the Barn attic lift. The cable and connecting hardware looked good and the rest of the hardware will be purchased to make the replacement soon.

Due to a change in the library operating policy we will have to end our meetings at 8:45 instead of 9:00.



2017 Lithorama

November 18-19

The Barn

3131 Pacific Ave, Livermore

Contact Dick Friesen to request a display case at the show!

We need volunteers!

**Please contact Lee Davisson
leedavisson@sbc global.net
to see how you can help.**



California Shows & Events

August 19 - 20: SAN FRANCISCO, CA
 San Francisco Gem & Mineral Society
 San Francisco County Fair Building
 9th Avenue & Lincoln Way
 Hours: Sat. 10 - 6; Sun. 10 - 5
 Contact: Ellen Nott
 Email: ellen_nott@yahoo.com
 Website: www.sfgemshow.org

September 23 - 24: LODI, CA
 Stockton Lapidary & Mineral Club
 Lodi Grape Festival Grounds
 413 East Lockford Street
 Hours: 10 - 5 daily
 Contact: Jerold Kyle, (209) 368-9411
 Email: jeroldkyle@yahoo.com
 Website: www.stocktonlapidary.com

September 23 - 24: MONTEREY, CA
 Carmel Valley Gem & Mineral Society
 Monterey Fairgrounds
 2004 Fairgrounds Road
 Hours: 10 - 5 daily
 Contact: Janis Rovetti, (831) 372-1311
 Email: janis12@sbcglobal.net
 Website: www.cvgms.org

September 23 - 24: REDWOOD CITY, CA
 Sequoia Gem & Mineral Society
 Community Activities Building
 1400 Roosevelt Avenue
 Hours: 10 - 5 daily
 Contact: William Spence, (408) 398-7502
 Email: bill.spence777@sbcglobal.net
 Website: www.sequoiagemandmineralsociety.org

October 21 - 22: PLACERVILLE, CA
 El Dorado County Mineral & Gem Society
 El Dorado County Fairgrounds
 100 Placerville Drive
 Hours: 10 - 5 daily
 Contact: (530) 676-2472
 Email: info@rockandgemshow.org
 Club Website: www.eldoradorocks.org

October 21 - 22: SANTA ROSA, CA
 Santa Rosa Mineral & Gem Society
 The Veterans Memorial (new date & location)
 1351 Maple Avenue
 Hours: Sat 10 - 6; Sun 10 - 5
 Contact: Jolene Coon
 Email: santarosarockshow@hotmail.com
 Website: www.srmgs.org

October 28 - 29: LOS ALTOS, CA
 Peninsula Gem & Geology Society
 Los Altos Youth Center
 One North San Antonio Road
 Hours: 10 - 5 daily
 Contact: Steve Jobe, (408) 834-5384
 Email: steve_jobe@sbcglobal.net
 Website: www.pggs.org

October 28 - 29: SACRAMENTO, CA
 Sacramento Mineral Society
 Scottish Rite Temple
 6151 H Street
 Hours: 10 - 5 daily
 Contact: Alyssa Mesiznger, (916) 662-5819
 Email: gemshow@sacramentomineralsociety.org
 Web Site: <http://sacramentomineralsociety.org>

November 4 - 5: CONCORD, CA
 Contra Costa Mineral & Gem Society
 Centre Concord
 5298 Clayton Road
 Hours: 10 - 5 daily
 Contact: Mary Hicks, (925) 289-0454
 Email: maryhicks@comcast.net
 Website: (temporarily under construction)

November 18-19: LIVERMORE, CA
 Lithorama 2016, Livermore Valley Lithophiles
 The Barn
 3131 Pacific Ave.
 Saturday, 10 - 5, Sunday, 10 - 4
www.lithophiles.com/lithorama.html

Livermore Valley Lithophiles

Jennifer Siders, Editor
P.O. Box 626
Livermore, CA 94551-0626
info@lithophiles.com

We're on the Web at www.lithophiles.org & www.facebook.com/Lithophiles/

Elected Officers & Club Information

Elected Officers:

President Lee Davisson
leedavisson@sbcglobal.net
V. President Stephanie Goldsmith
Secretary Molly Alexander (925) 606-6977
Treasurer Bill Bish (bcbish@att.net)

Membership: The Livermore Valley Lithophiles invites to its membership anyone genuinely interested in minerals, gems, lapidary, geology or any of the other earth sciences, and who desires association with others of like interests. Membership in our club consists of three classes: Senior, anyone eighteen years or older; Junior, anyone under eighteen; and Honorary. Dues are for the calendar year and are as prescribed in the by-laws, Article III. \$25.00 per family, \$20.00 per individual and \$10.00 for Juniors (twelve and younger.)

Meetings: General Meeting – Second Thursday of each month, 7:30 p.m. Civic Center Livermore Library Community Room (**Locations change go to Lithophiles WEB-SITE**). Board Meeting – Fourth Thursday of each month, 7:30 p.m. at the Club Shop or to be announced in the *Lithogram*. Any special meetings or places will be published in the *Lithogram*.

Club Shop: The shop at the Barn is open to club members 7:00 p.m. to 10:00 p.m.. on Tuesday nights. If no one arrives by 7:30 p.m. or if the Shop Foreman has not been informed a member will arrive late, then the shop will close at 7:30 p.m. Shop Foreman, Stephanie Goldsmith (925) 447-1722.

Field Trips: Location and date will be published in the *Lithogram*.

Bulletin: *Livermore Lithogram*. Published monthly and mailed or emailed to active members and guests. News of interest, reports and articles must be received by the first Tuesday of the month. Articles may be reprinted by giving proper credit.

Editor:

Jenny Siders
email: jenny.siders@me.com