

Livermore *Lithogram*

Volume XXXIII
Number 06
June, 2008

Livermore Lithophiles
Livermore, California
Member: CFMS

Next General Meeting:
Thursday, June 12, 2008
Carnegie Building, 4th and J Streets
7:30 p.m.

Next Board Meeting:
Thursday, June 26, 2008
The Shop, 7:30 p.m.
Members are welcome to attend!

Refreshments:
Beth Myers and Diane Day

Inside this issue:



CFMS Camps Are Great	2
California Shows & Events	3
Sunshine	3
Co-op Field Trips	4
Show Chairman	4
Editor Needed	4
Micron/Mesh Conversions	5
General Meeting Minutes	6
Board Meeting Minutes, April	6
Board Meeting Minutes, May	7

Program: A visit to Petrified Forest National Park, Arizona (DVD).

Everyone bring your favorite petrified (fossilized) wood items of any kind. Please, nothing requiring a forklift!

Presidents Message:

Hello, Lithophiles!

In a recent conversation with the wood shop teacher at Livermore High School, he told me about his property approximately 30 miles past Auburn where hydraulic mining was done. He is willing to host a field trip to his property this summer. As an added bonus, he can take us to the property where the first lawsuit was filed against hydraulic mining.

I have some rock samples typical of what is found there to show everyone at the meeting. If enough interest is shown, we will plan a summer field trip to this property. He does ask that any gold and artifacts will stay with him.

As usual, I'm inviting everyone to please come to the meeting on Thursday, June 12 and let your voice be heard.

Bill Snyder, President

CFMS Camps Are Great Week Long Adventures!

By **Debbie Whiteside**

"Up and down to the middle and back" was my mantra for 2 full days of learning to cut and polish cabochons at Camp ZZYZX.



Bob, our daughter Suzanna, and I spent a fun week at the CFMS jewelry camp located out in the Mojave Dessert over Easter week. If you remember, this past September, Bob and I had our first experience with the CFMS camp program up at Camp Paradise. I think we now have twice yearly vacations set for years to come!



On the third day I tried my hand at silver clay. I love to bead and I picked up two new beaded bracelet patterns and continued with the wire wrap projects that I began at Camp Paradise.



Suzanna had a good time in the silver smithing room. She came home with several beautiful bracelets - one that she made from start to finish - cab and bezel and soldered all the chain links.



Bob went on the organized field trips each day. He discovered that he likes the desert.



ZZYZX is a science study camp. The food was prepared by a talented banjo player who serenaded us one night along with other CFMS talent. We enjoyed the meals and the camaraderie of our fellow rock enthusiasts. And luckily I didn't see one scorpion!



All photographs compliments of **Debbie Whiteside**.

California Shows And Events

June 7-8 La Habra

North Orange County Gem & Mineral Society
La Habra Community Center
101 W. La Habra Blvd.
Hours: 9 - 5 both days
Don Warthen (626) 330-8974
Email: warthen@earthlink.net
Website: nocgms.com

June 27, 28, 29 Ventura

California Federation of Mineralogical Societies
Ventura County Fairgrounds
Hours: 10-5 Daily
Bural LaRue (909) 874-5664
Email: bplarue@earthlink.net

July 12-13 Culver City

Culver City Rock & Mineral Club
Culver City Veteran's Memorial Auditorium
4117 Overland Avenue
Hours: Sat. 10 - 6; Sun. 10 - 5
Website: CulverCityRocks.org
Phone: (310) 391-8429
Email: maryellenandrick@aol.com

August 2 - 3 San Francisco

San Francisco Gem & Mineral Society
San Francisco County Fair Bldg
Ninth Ave. & Lincoln Way
Hours: Sat. 10-6 Sun 10-5
Ellen Nott (415) 564-4230

September 27-28 Monterey

Carmel Valley Gem & Mineral Society
Monterey Fairgrounds
2004 Fairgrounds Rd.
Hours: Sat. 10 - 6; Sun. 10 - 5
Sky Paston (831) 417-7477
Email: sky@familystones.net
Website: www.cvgms.org

September 27-28 Stockton

Stockton Lapidary and Mineral Club
Scottish Rite Masonic Center
33 West Alpine Ave.
Hours: Sat. 10 - 5; Sun. 10 - 4
Nettie Meissner (209) 858-2263
E-mail:footsey1@yahoo.com

October 11-12 Grass Valley

Nevada County Gem & Mineral Society
"Earth's Treasures"
Nevada County Fairgrounds
11228 McCourtney Road
Hours: 10 - 5 both days
Kim Moore (530) 470-0388
Email: Kmoore160@comcast.net

November 22-23 Livermore

LITHORAMA 2008 Show and Sale,
Livermore Valley Lithophiles Gem & Mineral Club; The 'BARN' 3131 Pacific Ave.
east of Livermore Ave. Hours: Sat. 10-5;
Sun. 10-4. Visit us at our website www.lithophiles.org

Show information is available at the California Federation of Mineralogical Societies website: www.cfmsinc.org

Additional Resources:

American Federation of Mineralogical Societies website: www.amfed.org

American Lands Access Association website: www.amerlands.org

CO-OP website: www.coop.freeservers.com

The California Federation of Mineralogical Societies web page www.cfmsinc.org gives everyone access to the CFMS Newsletter.

Sunshine

Ellen Placas continues to adhere to her regiment of antibiotics. Her condition leaves her feeling very fatigued.

Bill Beiriger is feeling better after his recent bout with shingles.



Regarding the political satire on page 5 of the May Lithogram, this was not meant to offend anyone. Please accept my apologies if it did.

-Beth Myers, editor

Field Trips

"CO-OP MEMBER" FIELD TRIPS

- All non-CFMS members must have proof of personal liability insurance (homeowners or renters)
- This trip is open to all rockhounds who agree to abide by the AFMS Code of Ethics, the directions of the field trip leader and practice safe rockhounding.
- Call the field trip leader beforehand to sign up and for further information.
- Remember to wear your name badge and sign in with the field trip leader.
- A Consent and Assumption of Risk Waiver of Liability form must be signed upon arrival at meeting site.
- The CO-OP website has information: www.ourfieldtrips.org (Password is needed)



June 7 -19 Fallon, NV; McDermitt, NV; Lake View, OR; Davis Creek, CA for rhyolite, agate, petrified wood, fossils, picture jasper, rainbow obsidian, sunstone and other. Mother Lode Mineral Society

June 14 Spider Mine west of Red Bluff, CA, for rhodonite. NBFT Organization, San Francisco Gem and Mineral Society

June 16-19 Virgin Valley, NV for opal (fee dig). Stockton Lapidary & Mineral Society

LITHOGRAM EDITOR NEEDED!

This is my last year as editor of the *Lithogram*. I'll make all my files available to the next editor.

Please contact **Bill Snyder** (925) 443-5497 or **Beth Myers** (408) 897-3060 if you are interested.

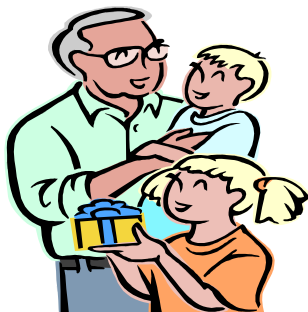
P.S. If you are getting tired of reading this - I'll pull it as soon as someone responds!

Show Chairman Needed!

This will be Bill Beiriger's last year as Show Chairman for our annual gem & mineral show.

We need a volunteer to fill this position. It would be educational if the new Chair could work with Bill in

preparing for our 2008 show in November. If you are the one, please call Bill Snyder (925) 443-5497 or Bill Beiriger (925) 443-5769.



Happy Father's Day!

Micron/Mesh Conversions

By Dick Friesen

When you buy tumbling grit, sandpaper, or polishing compounds you sometimes see them listed by grit size, sometimes by micron size, and sometimes both.

There is an accepted industry standard for converting between the two but it is not always followed. Just to keep things interesting, the standard is not exactly correct. It is just a round number approximation.

Particle size in micron is measured quite accurately by sedigraph but mesh is measured by a screen and there are no screens finer than about 1000. After that the mesh size is just calculated.

One micron is one millionth of a meter, mesh is defined as the number of particles per inch. When the micron size is given it is usually correct regardless of what mesh is listed.

Here is the standard and exact mesh-micron, micron-mesh tables.

Accepted Standard	Exact Mesh to Micron		Exact Micron to Mesh		
	Micron	Mesh	Micron	Mesh	
400	40.00	40	635.00	500.00	51
600	30.00	60	423.33	250.00	102
1200	15.00	80	317.50	100.00	254
3000	6.00	100	254.00	80.00	318
8000	3.00	220	115.45	60.00	423
14000	1.00	280	90.71	30.00	847
50000	0.50	400	63.50	15.00	1693
100000	0.25	600	42.33	10.00	2540
		800	31.75	9.00	2822
		1000	25.40	8.00	3175
		1200	21.17	7.00	3629
		1800	14.11	6.00	4233
		2000	12.70	5.00	5080
		2500	10.16	4.00	6350
		3000	8.47	3.00	8467
		6000	4.23	2.00	12700
		8000	3.18	1.00	25400
		10000	2.54	0.75	33867
		14000	1.81	0.50	50800
		25000	1.02	0.40	63500
		50000	0.51	0.35	72571
		100000	0.25	0.30	84667
		150000	0.17	0.25	101600
		200000	0.13	0.20	127000
		250000	0.10	0.10	254000

Minutes of the General Meeting May 8, 2008

The meeting was called to order at 7:33 p.m. by president **Bill Snyder**.

Guests:

- ☺ **Andrea Rodrigues** of the Stockton/Motherlode Club - Farmington, CA
- ☺ **Karen Thompson** - Livermore, Ca
- ☺ **Jacob, Jeff and Jared Carnes** - Livermore, CA (Friends of **Brandon**. After introductions and welcomes, **Karen** sang a cute "rock" song the kids have learned).

Minutes: Accepted as printed in the May, 2008 *Lithogram*.

Treasurer's Report: **Deloris Colonna** announced gross income from the sale of **Mike Gorges'** material on March 29, 2008. The LARPD has refunded the \$300.00 "cleanup" deposit for use of the Barn. **Mike Kokinos** will be contacted regarding club payment of tax for interest accrued on our certificate of deposit.

Children's Fair: **Deloris C.** has paid LARPD the \$50.00 deposit to hold a space for the club for the fair Sept. 6-7 at the community center one table and two chairs will be provided. We can bring our own supplementary tables and chairs as needed.

Correspondence: A letter from **Sally Brown**, club member has been received critical of the page 5 presentation of "differences of political philosophies" in May *Lithogram*. **Sally B.** found the material stereotypical and probably offensive to some readers. Discussion followed. **Beth Myers**, editor noted she gave a lot of thought to whether or not to use the material. **Beth M.** will apologize in the next *Lithogram* to anyone offended by the submission.

Shop Classes: **Lynn Zirkle** discussed the feasibility of offering opportunities for lost wax casting every Tuesday night at the shop. Dental tools [and wax for carving] are available. Need to know club interest.

Field Trips: The field trip to **Nancy Bankhead's** new property didn't produce much. **Nancy B.**, **Diane Day**, **Jim Gruver**, **Lanny Thompson** and **Lanny's** guest did the searching.

Picnic: **Beth M.** offered a possible spot at the 14 mile marker on Mines Road. She will speak to **Nancy B.** about it.

Refreshments: **Beth M.** and **Diane D.**

Old Business: **Dick Friesen** has yet to hear from the master gem carver we would like to speak on Wed., November 5 at the Livermore library. **Bob Trimmingham** will reserve community rooms A and B anyway. More information pending.

New Business: The Sebastapol, Ca club would like to purchase more flats of fluorescent material that was offered at the Mike gorges sale. Cutting material was also of interest. After discussion **Bob T.** (925-443-5983) vounteered to be the contact. The next Lithorama would be the most feasible time to get at the material.

The Break: Door prizes, raffle and sale of **Mike Gorges'** boxed material.

Program: Another section of the DVD dealing with the 2007 Tucson show.

The meeting was adjourned about 9:00 p.m.

- *Bob Trimmingham*, Secretary

Minutes of the Board Meeting April 24, 2008

Present were **Bill Snyder**, **Bob Trimmingham**, **Deloris Colonna** and **Dick Friesen**. There was no quorum present. Correspondence was read, discussed and acted upon when necessary.

LARPD will hold a public meeting at 7:00 p.m. on April 30 at the Community Center to consider increasing rental fees for the Barn, the Carnegie Building, etc. The Lithophiles use such facilities and could be affected by this. **Bob T.**, **Deloris C.** and **Bill S.** (?) plan to attend the meeting.

Children's Fair: Entry form has been received and must be submitted by May 2, 2008. The Fair Takes place September 6-7 and we will request a corner position. **Bill S.** will check immediately to see if we will be permitted to bring our own table (s) and extra chairs as needed. **Deloris C.** will submit the \$50.00 (?) fee and forms next Monday after checking with **Bill S.** **Bob Whiteside** will chair this event.

Deloris C. said we have received from LARPD the \$300.00 deposit submitted for the **Mike Gorges** collection sale.

Continued on page 7

Board meeting Minutes, April 24, 2008 continued from page 6

Sunshine: **Ellen Placas** is home battling a virus (?) infection that is keeping her on soft food and facing months of recovery. **Bob T.** will send **Ellen P.** a card.

Speaker. Under old business **Dick F.** said the master gem carver he was trying to get for a presentation is unavailable in October. **Bob T.** will check to see if the library community rooms are available the week of November 3, 2008. November 5 is first choice.

Program: Two DVDs will be available, one on White Sands National Monument, NM and the other a continuation of the Tucson Show coverage begun last regular meeting. The Tucson Show DVD was favored by those present.

-Bob Trimmingham, secretary

Minutes of the Board Meeting May 22, 2008

The meeting was called to order at 7:33 p.m. by president **Bill Snyder**. Also present were **Bill Beiriger**, **Jim Gruver**, **Bob Whiteside**, **Dick Friesen**, **Deloris Colonna** and **Bob Trimmingham**.

Treasurer's report: **Deloris C.** discussed recent income and outgo and gave the current balance. It was decided that the money raised by the sale of **Mike Gorges'** material be tabulated on separate income-outgo pages kept apart from the regular club accounts.

Children's Fair: Because of the brief amount of time to submit registration and insurance forms, **Deloris C.** and **Bob T.** took care of this for the club. LARPD will provide one table and two chairs. The Lithophiles may provide their own tables, chairs and canopy as needed. **Bob Whiteside**, chairperson, was brought up to date on what still needs to be done. More preparation details will be covered at the June 12 meeting.

Library Festival: About 300 more bags will need to be stuffed for use with the wheel. Bags were overstuffed last year, slowing the dumping - rebagging process for the student helpers. **Bob T.** suggested dumping material into nine plastic boxes placed on the numbered cloth to facilitate rebagging. Expense would be minimal, the cloth would stay clean, and helpers hands would be protected.

LARPD Rental Rate Increase: **Bob T.** and **Deloris C.** attended a meeting at the community center on April 30, 2008 to hear the proposal for rental rate increase for LARPD facilities. No discussion on the issue took place while we were there (2 1/2 hours) but written material proposed increases of 10%, 10% and 5% over the next three years.

Picnic: Sites will be discussed at the next regular meeting.

Brunton Compass Award: **Bill B.** will check on applicants and report at the next meeting.

Club Historian: **Bill B.** and **Bill S.** continue to give talks to school, scout, etc. Groups and often receive thank you notes. It would be expedient and fun to have such notes as well as bulletins, brochures, newspaper articles, etc. relating to club activities organized and preserved in scrapbooks as was done years ago. A club historian is needed for this creative activity. More at the next meeting.

CFMS: State show will be June 27-29 in Ventura, CA. **Bob W.** will be attending and he will express any concerns we relate to him. Board member suggestions included the collecting status of rock, mineral and gemstone localities.

Old Business:

- * **Dick F.** has received no reply from the gem carver he has invited to speak to our club/community in early November. Since such a talk would be great publicity before the Lithorama, another speaker of general interest will be sought. A large room has been reserved for our use the evening of November 5 at the library. More at our next regular meeting.
- * The carving sets for school use have arrived. **Bill S.** will hold these until delivered.

New Business: **Dick F.** showed a new book on rock tumbling he has received. The cost is \$18.71 each for 1-11 copies and discounted for larger orders. Discussion took place about making such items, including tumbling grit available for public purchase.

The meeting adjourned at 8:32 p.m.

-Bob Trimmingham, secretary

Livermore Valley Lithophiles

Beth Myers, Editor
P.O. Box 626
Livermore, CA 94551-0626
eme2@wildblue.net



We're on the Web at www.lithophiles.org

Elected Officers and Club Information

Elected Officers:

President	Bill Snyder	(925) 443-5497
Vice President	Beth Myers	(408) 897-3060
Secretary	Bob Trimmingham	(925) 443-5983
Treasurer	Deloris Colonna	(925) 447-5041

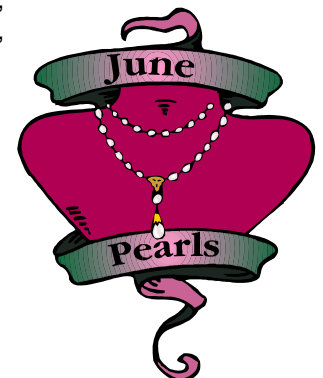
Membership: The Livermore Valley Lithophiles invites to its membership anyone genuinely interested in minerals, gems, lapidary, geology or any of the other earth sciences, and who desires association with others of like interests. Membership in our club consists of three classes: Senior, anyone eighteen years or older; Junior, anyone under eighteen; and Honorary. Dues are for the calendar year and are as prescribed in the by-laws, Article III. \$25.00 per family, \$20.00 per individual and \$10.00 for Juniors (twelve and older.)

Meetings: General Meeting - Second Thursday of each month, 7:30 p.m. at the Carnegie Building, 4th and J Streets, Livermore. Board Meeting - Fourth Thursday of each month, 7:30 p.m. at the Club Shop or to be announced in the *Lithogram*. Any special meetings or places will be published in the *Lithogram*.

Club Shop: The shop at the Barn is open to club members 7:00 p.m. to 10:00 p.m.. on Tuesday nights. If no one arrives by 7:30 p.m.. or if the Shop Foreman has not been informed a member will arrive late, then the shop will close at 7:30 p.m. Call Lynn Zirkle, Shop Foreman, at (925) 443-2920.

Field Trips: Location and date will be published in the *Lithogram*.

Bulletin: *Livermore Lithogram*. Published monthly and mailed or emailed to active members and guests. News of interest, reports and articles must be received by the first Tuesday of the month. Articles may be reprinted by giving proper credit. Editor: Beth Myers, 35705 San Antonio Valley Road, Livermore, CA 94550-8402, email: eme2@wildblue.net



Printed by Postal Annex
2150 Portola Ave., Suite D
Livermore, CA 94551