

Livermore

Lithogram



**Volume XXXV, Number 6
June 2010**

**Livermore Valley Lithophiles
Livermore, California**

Next General Meeting:
Thursday, June 10, 2010
Carnegie Building, 4th and 'J' Streets
7:30 PM

**Program: Show and Tell - see President's Message
C.S.U.E.B. - Scholarship Presentation**

Next Board Meeting:
Thursday, June 24, 2010
The SHOP, 7:30 PM
Members are welcome to attend!

Refreshments:
Chris H. & Lanny T.



Inside this issue:

Presidents Message - Cont.	2
Other Society Newsletters Info.	2
New Fossils La Brea Tar Pits	2
General Meeting Minutes 4-8	3 - 4
Mineral Safety - Do or Die	4
Board Meeting Minutes 4-22	5
Nine Days In The Nevada Desert	6-9
California Shows & Events	9
Field Trips	9

Presidents Message:

Hello everyone,

June may bring a break in the action for kids and teenagers, but it is a busy time for rockhounds:

June 12-13. Field trip to Austin, Nevada area to collect green and purple fluorite, snakeskin agate and blue chalcedony. Open to all CFMS members and guests. June 11 is the travel day. Contact me early for details.

June 18-20. CFMS/AFMS Show at So. CA University of Health Sciences. 16200 E. Amber Valley Drive, Whittier, CA. 10 a.m. - 5 p.m. each day. Field trips follow the show:

June 21 - Oceanview Tourmaline Mine (\$50.00 fee)

June 22 - Himalaya Mine (\$50.00 fee)

June 23 - Fossils at Ant Hill, near Bakersfield or Jalama Beach (Fossils, easier trip)

June 24 - Lavic Siding, Mojave Desert or LA County Museum of Natural History (easier trip)

June 23 - Alameda Co. Fair opens. Come see the society case Diane is entering for us. The theme is wine country, and you
(cont. page 2)

President's Message cont.

may may still bring appropriate CALIFORNIA material to the next meeting for her to use.

There are NO Lithophile meetings in July, but we will convene Thursday night (6 p.m.), July 22, at the shop to pack bags for the San Leandro Library Project. **MARK YOUR CALENDARS.**

Program for June will be "Show and Tell." Bring something you have collected, aquired, made or experienced in the receint past to share with the group. Show off a little, all you shy shop and workshop artisans. And yes, there will be a new coffee pot to make life easier.

Finally, if the last part of the May meeting's program, "Darwin's Dilemma," surprised or confused you, you were not alone. You witnessed the modern "Intelligrnt Design" version of Creationism.

Bob Trimmingham, President

Other Society Newsletters

All Newsletters from other societies will be on the Lithophiles "ONLY Members Page". This page will be a "SECURE PAGE." Please contact me for the information on how to get to that page.

A Newsletter from Charlotte, NC has been added to our web site. There is a series of articles on, 'How to Photograph Minerals, Gems, Fossils Jewelry and Lapidary Material with a Digital Camera'. The series starts with June 2009 and goes through May 2010 with several more months to come. I wish to thank the Editor and the Author from the Charlotte Club, Ron Gibbs for allowing us to use the articles by our society.

Chipper's Chatter
Chesapeake Gem & Mineral Society
Baltimore, Maryland
March 2009
via S.C.R.I.B.E.

New Cache of Fossils Found from an article in the Los Angeles Times, Feb. 22, 2009

The largest known deposit of fossils from the last ice age has been found during construction of an underground parking lot near the famed La Brea Tar Pits in Los Angeles. Researchers from the Page Museum at La Brea Tar Pits have begun extracting fossils from the sandy, tarry soil and expect the find to double the size of their current collection!

Already unearthed is the nearly 80% complete skeleton of a mammoth, plus a huge cache of snails, clams, fish, gophers and plants. Because of time constraints, researchers are removing huge blocks of material and placing them in storage for later study.

Carolyn Weinberger

Minutes of the General Meeting

May 13, 2010

The May 13, 2010 meeting of the Livermore Lithophiles, was called to order at 7:31 PM by President Bob Trimmingham.

Guests: No guests were present.

Correspondence: We had a variety of newsletters.

Sunshine: Ellen Placas fell and broke her hip and arm. Please send cards.

Minutes: Bob T. found one correction. The date of the San Leandro Library party should be August not April. The minutes were approved with this correction.

Treasurer's Report: Diane is looking into setting up a second account. We will discuss this again at the next board meeting.

Lithogram: Bill said he will use three pages in the June Lithogram to finish the article started in May. Bob T. is considering a 6 part series "60 years of mineral collecting." Each part will cover one decade.

Shop Report: No formal shop report; everything is the same.

CFMS Report: Bob Whiteside reported that the Show will be in Whittier, CA, June 18-20. Bill B. and Dick F. will be exhibiting cases at this show. Remember Camp Paradise, 2nd week, May 23-29.

Fair: Diane needs California material for our display at the fair. Lanny T. brought some stone grapes to use as decoration in the case and Bob brought lots of material, but Diane needs more variety for the case so give her a call. Also, the fair need more display cases in the gem and mineral building.

Programs: Bob W. suggested a show and tell for the June meeting. Please bring something from your collection to share with the other members.

Field Trips: Bob W. went to Agate Beach. He didn't see any other rockhounds.

Diane D. went to Snyder's Ranch. She said the weather was good, but they didn't have the digs open, like in the past.

Black Chasm: We are postponing the club trip until the fall. At that time we will try to add a trip to a mine in the Jackson area.

Lithorama: Bill is working on the children's corner. Dick has organized the dealers and demonstrators. We need others to help. Dick has the form to invite guest exhibitors, but he needs to know how many members will be putting cases in our show. There are not too many shows left between now and September. Normally, half of the exhibitors are club members and half are guests. Roughly 28 cases are needed. We need a firm number of club members, so we will know how many to ask.

Work Shops: Currently, none are planned.

Schools: Bill B. contacted Pat Boyle about money to purchase books for the schools.

Bob T. publicly thanked Bill for his work with the schools.

San Leandro Library: We will need to have a grab bag stuffing party to have enough bags for this event.

Old Business: Bill B. got our business license.

Bill gave the secret code to get into the members only part of the website. Call him if you need to know the code. With this feature, we can post the newsletters from other clubs again.

New Business: none

Refreshments: Chris H. and Lanny T.

Program: The program was presented after the break and refreshments. The program was comprised of the second half, of the video, entitled "Darwin's Dilemma" which deals with the mystery of the Cambrian fossil record.

Meeting adjourned at 8:57 PM. Acting Secretary, Chris Hunt

Do or Die

by Cathy Gaber Opal Express, Bulletin of the American Opal Society

http://www.amfed.org/a_safetyAOS.tm#toxicity (Selected by Safety Chair, Aradasa Johnson)

What you do not know about a mineral can hurt you. You cannot always tell by looking whether or not a mineral contains harmful elements, or if it is radioactive or if its fumes or dust might be deadly. Most minerals are completely harmless, but with a few simple precautions you can protect yourself from those with potentially deadly effects. Elements such as lead, mercury, arsenic, uranium, antimony and cadmium are toxic. Without proper identification, you can never be sure if you might be handling some of these potentially dangerous substances. Never lick an unidentified rock, and always wash your hands after handling one. Wear gloves if there is any suspicion that a specimen may contain harmful elements. Three methods can be used to spot some hazardous minerals. Color is one indicator. If a specimen is an unnatural looking neon yellow, yellow orange or green (such as tyuyamunite, autunite and torbernite), it is probably a radioactive mineral. Radioactivity, which is found in over 200 minerals, can be easily detected with a geiger counter. Even though most fluorescent minerals are not radioactive, sometimes fluorescence can be an indicator, as the radioactive agent (such as uranium salts) can be fluorescent. Generally, only long term exposure or ingestion would cause problems, but, as the guys at the Smithsonian say, don't put them in your pockets either. Radioactivity can affect fertility in men.

Unless you work extensively with quartz, cristobalite, tridymite or quartz bearing rocks like granite; asbestos minerals (amosite, chrysotile, tremolite, actinolite, anthophyllite and crocidolite); or coal, you are unlikely to be at risk for silicosis, asbestosis or black lung. The hazard from these and other minerals is in the airborne particles that get caught in the lungs or migrate to other areas of the body. Lapidaries should work in a well ventilated space, and they should be especially concerned with avoiding the fumes from working with materials like malachite, natural cinnabar and many shells. Wearing masks can help too. When working any new material, always check John Sinkankas' Gemstone and Mineral Data Book for precautions and possible toxicity. Be safe not sorry.

Ozark Earth Science Gem, Mineral & Fossil Club

Mountain Home, Arkansas

February 2009

Via S.C.R.I.B.E.

Minutes of the Board Meeting

May 27, 2010

The meeting was called to order at 7:30 by President Bob Trimingham.

Members present: Bob Trimingham, Delores Colonna, Diane Day, Bill Beiriger and Chris Hunt. Dick Friesen and Andrea Rodrigues joined the meeting in progress.

Correspondence: We got our business license.

Bill got a call from Cal-State East Bay asking if we would be giving the Brunton compass scholarship this year. After some discussion, Chris made a motion to purchase a Brunton compass for a student at Cal-State. Deloris seconded. The motion passed.

We had a short break when some guests dropped in to have a rock identified. They were invited to join us at our June meeting at Carnegie Library.

Treasury: Diane gave a report.

Lithogram: Bill said he has things for the June Lithogram. He is looking at things for the future.

Programs: June meeting will be a show and tell. Everyone should bring something that they can talk about. This can be something you made or purchased.

Field Trips: Federation Show June 18-20. There are several field trips planned after the show. This way they will not conflict with the show itself. Check the CFMS website for a list of all the trips planned.

Lithorama: Dick brought the forms for exhibitors to enter our show. We still need someone to step up and handle the show.

Fair Case: Diane is asking for California materials that go along with the wine theme for the Fair this year.

San Leandro Library: The library is holding the party for good readers on August 14, 2010. We will need to stuff grab bags before that date. Bob suggested July 22, 2010, at the Barn. That is the board meeting night, but we will not have a board meeting.

Old Business: Bill is getting new software to make the website secure.

New Business: Bill found a new book on "Agates and Jaspers". It is written by the same author that has articles on digital photography in the Charlotte, NC newsletter.

Bill made a motion to purchase a copy of the book for \$40. Dick seconded. It passed with no opposition.

Meeting adjourned at 8:15 pm.

Acting secretary, Chris Hunt

Nine Days In Nevada

By: Mary Frances Berkholz

Field Trip Editor

Gems and Minerals Magazine

May 1959

state boundaries lay east of Aurora. Aurora flourished as an interstate county seat until 1863. At that time the California-Nevada boundary survey found Aurora was 3 miles within Nevada's borders. Geodes and quartz crystals may be collected at Aurora.

Monday, August 4 — Area 4

The Lithophiles met with Frank A. Keith, assistant superintendent of the Anaconda Mine at Yerington. Advance arrangements had been made and Mr. Keith took the group, via bus, on a tour of the vast mining operations. Excellent specimens of chrysocolla and cuprite were obtained.

Area 5 and 6

Leaving Yerington the caravan continued to Schurz and then 19 miles east to the famous Rawhide wood location. Beautiful, gem quality agatized and opalized wood was added to their growing collection. A brief stop was made at the old ghost town of Rawhide and then on to camp at Dead Horse Well for the night. Betty Levens noted, "We found some nice chalcedony roses near camp tonight."

Tuesday, August 5 — Area 7

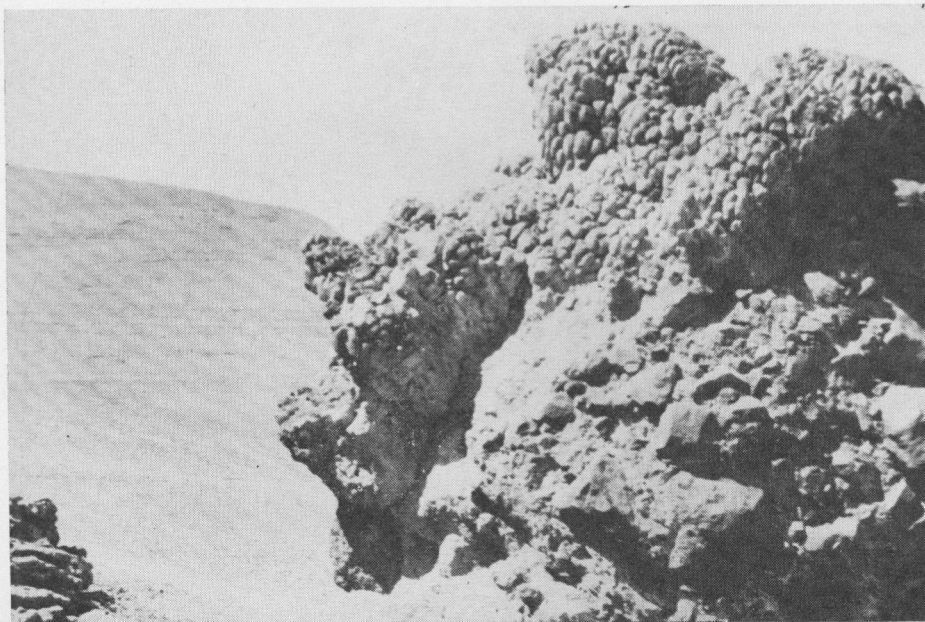
The large mining operation at Brucite, one mile east of Gabbs, was next on the

itinerary. A. N. Dixon, superintendent, led the group on a guided tour of the Brucite mine. Fine specimens of brucite, magnesite and granite were collected.

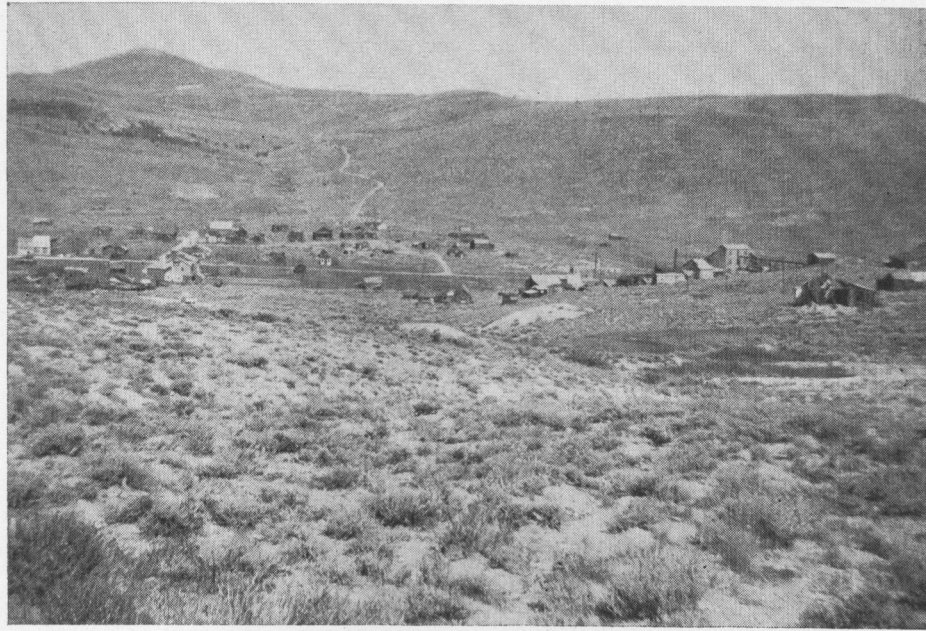
This huge deposit of brucite and magnesite was discovered in the Paradise Range in 1927. The deposit is of exceptionally high quality. During World War II magnesium was declared a strategic mineral. The government took over the mines and built the town of Gabbs. The mines and mill are now state owned and leased to private companies. (One mile north and 7 miles east of Gabbs is a huge iron mine. Excellent specimens of magnetite can be collected. Obtain permission before entering the property.)

Area 8

Following their visit to the Brucite mine the Lithophiles continued north to the Broken Hills petrified wood area (G&M, Oct. '57). This area is often referred to as "Gabbs wood locality." The group found the temperature just a little too warm for comfortable collecting and did not remain very long in the area. (Your field trip editor visited this area the last of July and found the weather ideal. Days were warm but



Colorful silica formations in the Hot Springs Mountains, Nevada.



Bodie, California, first stop on a nine-day field trip.

nights were cool. In fact, we camped in the Broken Hills and woke up to find the ground covered with frost! The elevation is near 6,000 feet and extremes in temperature are to be expected.) The Lithophiles continued to Eastgate and camped for the night. Betty Levens noted, "A stream ran through our camp and what joy it was to put our hot, tired feet into it."

Eastgate was once an important stage station on the Pony Express route. Today a service station, store and ranch are all that remain.

Wednesday August 8 — Area 9

Up bright and early, the Lithophiles headed south into Campbell Canyon to search for fossils. Lots of digging was required but many fine specimens were obtained. They all felt it was worth the effort. Fossils are found all along this back route to Ione.

Area 10

Afternoon found the group enroute along Highway 50. A stop was made at Fairview, another ghost of Nevada's mining past. A rich silver strike gave rise to Fairview in 1905. The usual boom followed and within a year lots were selling for \$100.00 a front foot. The closing of the Nevada Hills mine

in 1917 brought the boom to an end. Acres of broken glass and an old bank vault are all that mark Fairview today.

Area 11

A side trip was made to Singing Sands Mountains, so called for the squeaky sounds made when one walks across these tremendous sand dunes.

Continuing west on Highway 50, the group went through Fallon and then on to Lake Lahontan to set up camp.

Thursday, August 7 — Area 12

An early start was made to the three wonderstone deposits (See G&M, Aug. 58, for detailed map). A large quantity of this colorful cutting material was easily collected by everyone. Fine lace agate was found at the "green hill," one mile southwest of the rainbow wonderstone area. (Area 13).

Friday, August 8 — Area 14

Ben Klus made arrangements to hire a boat and the Lithophiles enjoyed a boat trip across the lake. They collected agate and selenite blades. A huge thunderstorm was building up in the area but held off long enough for them to enjoy a picnic supper in the evening as guests of the Lahontan Gem & Mineral Club.

(CONTINUED)

Saturday, August 9 — Area 15
 Mrs. Eva Biggs, of the Lahontan Club, led the caravan north to an extensive silica deposit in the Hot Springs Mountains. Huge tufa spires and pillars make

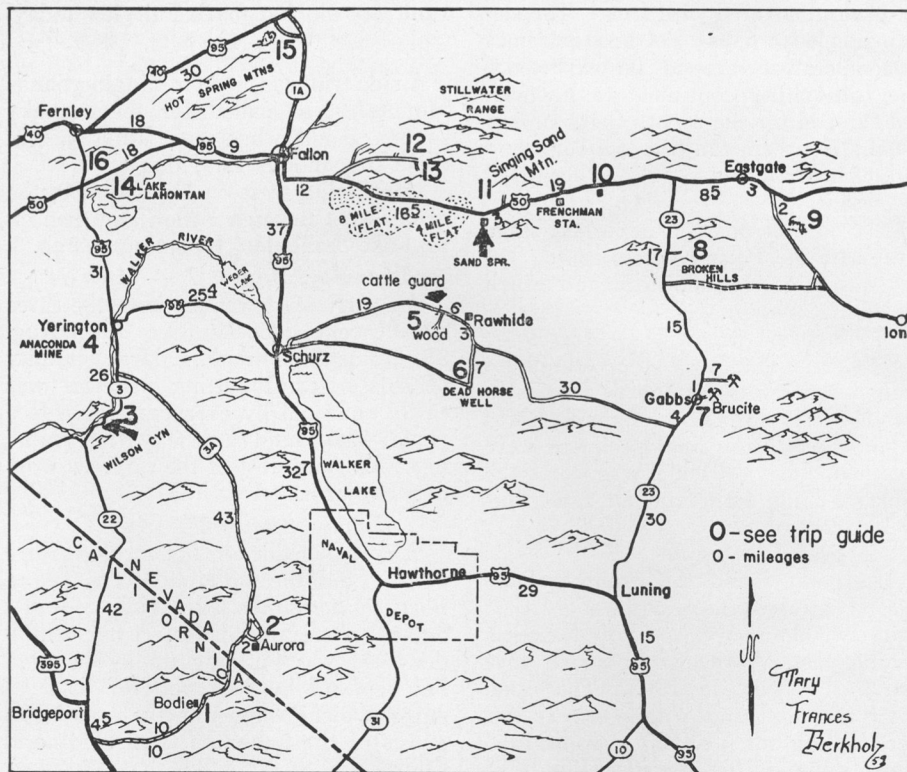
this an interesting area to see and photograph.

At this point the guided trip ended and the Lithophiles, individually, headed homeward.

Trip Guide

1. **Bodie**, California, el. 8368'. A ghost town.
2. **Aurora**, Nevada, el. 7415'. A ghost town.
3. **Wilson Canyon**. Good campsite near bridge. Steep foot trail leads north to the petrified wood deposit.
4. **Anaconda Mine**, Weed Heights west of Yerington. Visits may be arranged. Contact H. R. Birch, Asst. Gen. Mgr.
5. **Rawhide wood location**. Take graded dirt road from Schurz, west towards Rawhide. At approximately 19 miles from Schurz, you will cross a cattle guard. Turn south onto dirt tracks. Wood will be found throughout this area.
6. **Dead Horse Well**. Good camp area.
7. **Gabbs, Nevada**. Brucite mine is 1 mile east of town. Iron mine is 1 mile north and 7 miles east.
8. **Gabbs wood locality** in the Broken Hills. See G&M, Oct. 1957 for detailed map.
9. **Fossil Hill** in Campbell Canyon. 3 miles east of Eastgate turn south on dirt road.

10. **Fairview, Nevada**. A ghost town. See text.
11. **Singing Sands Mountain**.
12. **Wonderstone locations**. See G&M, Aug. 1958 for detailed map.
13. **Lace agate location**. From the rainbow wonderstone area take a dirt road south for 1 mile to the greenish mountain. Beautiful lace agate in this area.
14. **Lake Lahontan**. Good camping area and collecting for agate and selenite.
15. **Picturesque silica formation**. 30 miles east of Fernley turn south on dirt road. Continue 6 miles. These fantastic pillars and spires can easily be seen from Highway 40.
16. **Jasp-agate location** in the hills south of Fernley. See G&M, September 1957 for detailed map.



34—GEMS & MINERALS—MAY 1959

Other areas could have been included. There are the jasp-agate location south of Fernley (Area 16), the opalized wood deposit along the canal near Fernley and Pyramid Lake (G&M Oct. '58), as well as the opalite at Steamboat Springs (G&M, Nov. '57).

It takes time and effort to plan a trip like the Lithophiles. It is usually impossible to skim along the highway and depend on obtaining information enroute. It may work out sometimes but not generally. A little planning, some research, and obtaining any permission

need in advance will make your vacation field trip much more enjoyable.

Also, several families or a club group, like the Lithophiles, making such a trip together will add to its pleasures. A congenial group has many pairs of eyes with which to spot choice material that might elude a single pair.

Nickel alloys retain their toughness at 300 degrees below zero.

Plan to attend a convention this year. See Coming Events for dates.



California Shows And Events

2010

June 18, 19, 20, 2010, Whittier, CA
CFMS / AFMS / NOCGMS SHOW
North Orange County Gem & Mineral Society
 website www.nocgms.com/show/index.htm

August 7 & 8 2010, San Francisco, CA
San Francisco Gem & Mineral Society
 San Francisco Co. Fair Bldg. (Hall of Flow-ers) 9th Ave. & Lincoln Way, Golden Gate Park
 Hours: Sat 10-6 Sun 10-5 Carleen Mont-Eton (415)564-4230
 Email: publicity@show.sfgms.org Website: www.sfgms.org

September 18 & 19 2010, Stockton, CA:
Stockton Lapidary & Mineral Club,
 Earth's Treasures 2010 Gem Show,

Scottish Rite Masonic Center, 33 W Alpine Ave

November 20-21, 2010 Livermore
LITHORAMA 2010 Show and Sale,
Livermore Valley Lithophiles Gem & Mineral Society; The 'BARN' 3131 Pacific Ave. east of Livermore Ave.
 Hours: Sat. 10-5; Sun. 10-4. Visit us at our website www.lithophiles.org

The California Federation of Mineralogical Societies web page www.cfmsinc.org gives everyone access to the CFMS Newsletter.

Show information is available at the California Federation of Mineralogical Societies website: www.cfmsinc.org

Additional Resources:

American Federation of Mineralogical Societies website: www.amfed.org

American Lands Access Association website: www.amerlands.org

CO-OP website: www.coop.freeservers.com

Field Trips

June 20, 2010 Spider Mine, rhodonite, SFGMS

July 3, 4, 5, 2010 Petersen Pk (Hallelujah), Virginia City, NV, for quartz crystals, Sutter Buttes Club - contact, Gerry Hill

Livermore Valley Lithophiles

Bill Beiriger, Editor
P.O. Box 626
Livermore, CA 94551-0626
info@lithophiles.com

We're on the Web at www.lithophiles.org



Elected Officers and Club Information

Elected Officers:

President **Bob Trimmingham (925) 443-5983**
V. President **Chris Hunt (925) 443-5525**
Secretary **Larry Patzkowski (925) 426-7768**
Treasurer **Diane Day (925) 606-0888**

Membership: The Livermore Valley Lithophiles invites to its membership anyone genuinely interested in minerals, gems, lapidary, geology or any of the other earth sciences, and who desires association with others of like interests. Membership in our club consists of three classes: Senior, anyone eighteen years or older; Junior, anyone under eighteen; and Honorary. Dues are for the calendar year and are as prescribed in the by-laws, Article III. \$25.00 per family, \$20.00 per individual and \$10.00 for Juniors (twelve and older.)

Meetings: General Meeting – Second Thursday of each month, 7:30 p.m. at the Carnegie Building, 4th and J Streets, Livermore. Board Meeting – Fourth Thursday of each month, 7:30 p.m. at the Club Shop or to be announced in the *Lithogram*. Any special meetings or places will be published in the *Lithogram*.

Club Shop: The shop at the Barn is open to club members 7:00 p.m. to 10:00 p.m.. on Tuesday nights. If no one arrives by 7:30 p.m.. or if the Shop Foreman has not been informed a member will arrive late, then the shop will close at 7:30 p.m. Call Lynn Zirkle, Shop Foreman, at (925) 443-2920.

Field Trips: Location and date will be published in the *Lithogram*.

Bulletin: *Livermore Lithogram*. Published monthly and mailed or emailed to active members and guests. News of interest, reports and articles must be received by the first Tuesday of the month. Articles may be reprinted by giving proper credit.

Editor:
Bill Beiriger,
Livermore, CA 94551-0626,
email: info@lithophiles.com

Shop open every Tuesday at 7:00 PM

General Meeting June 10th at 7:30 PM
Board Meeting June 24th at 7:30 PM