

Livermore

Lithogram



Volume XXXVIII, Number 6 **Livermore Valley Lithophiles**
June 2013 **Livermore, California**

Next General Meeting:
 Thursday, June 13, 2013
Livermore Library Community Room
 7:30 PM

Program:
Petroglyph presentation.

Next Board Meeting:
 Thursday, June 27, 2013
At the Shop
 Members are welcome to attend!

Meeting Location: Livermore Library Community Room 'A'

Refreshments: Jenny and Frank

June Last Meeting till August	
<i>Inside this issue:</i>	
General Meeting Minutes May 9	2
Board Meeting Minutes May 23	3
Alaskan Volcanoes - Part 6	4
Shop Report	5-6
Rosicrucian Museum	7-9
Summer Field Trip	10
Shows & Events & Field Trips	11

Presidents Message:

Joyous June Lithophiles! I hope to see you at the June general meeting. The club has brought in an outside speaker to speak about petroglyphs. I hope to see you there. It will be our last general meeting before the summer break.

The wire-wrap jewelry class is set for June 8. Perhaps the fledgling wire-wrappers will bring some of their projects to show off at the June meeting?

The field trip to the Rosicrucian Museum in San Jose drew only two intrepid souls. Lee and Frank said they had an interesting visit though.

That just two members made the Rosicrucian field trip causes me to wonder about the proposed Oregon collecting trip. The Board has set the date for July 6-13, 2013. We would gather at Richardson's Ranch in central Oregon on July 8, leaving Livermore on the 6th. We picked these dates in July because there are several nice shows in central Oregon at the end of June and in early July that members could go to prior to the collecting field trip. Richardson's Ranch is an excellent collecting site for agate-filled thunder eggs and some other cutting material – see <http://richardsonrockranch.com/> for more information. We may spend all our time in the Richardson's Ranch

Presidents Message - cont. from pg. 1

or, depending on interest, we may also visit Holleywood Ranch (see <http://holleywoodranch.com/>) to collect petrified wood. The shows that I mentioned are June 20-23 in Prineville, June 26-30 in Madras, and July 4-7 In Sisters. ***We need to know if anyone intends to make this trip, before we invest our time and resources in planning it. Please respond to me by email, by telephone, or at the meeting if you plan to join us.***

Now is the time... Please consider serving as a Lithophiles officer in 2014. Talk to me for details about the job. Each of your current officers will have served multiple years, so it's time for someone else to step up. Act now and get some solid on-the-job training!

-Rich Hunt rcjhunt@comcast.net 925-443-5525

Minutes of the General Meeting

May 9, 2013

The May general meeting was called to order at 7:36 pm.

New members: Julie and Gerry Golden.

Corrections: Trim saw repair is in progress, not yet completed. Minutes are approved as corrected.

Expenses: Lithogram and Shop expenses are almost \$800.00.

Shop: The shop has been fairly busy. The saws are going to be repaired in about a week. Dick, Frank, Lee and Albert have volunteered for the job.

Schools: Ulexite was returned from Las Positas to be polished. Bill has not heard from Mrs. Boyle of the Livermore schools.

Programs: The talk in June will be on petroglyphs. In September or October, we will have a speaker on glass bead making.

Tonight's program: Lee will talk on decorative rock/marble.

Field trips: The Rosicrucian museum trip will be on May 19th. Meet at the museum at 1:00 pm. Or meet at the Barn at noon to arrange car pools.

Field trip to Oregon: You can collect petrified wood at Holleywood ranch. Geodes and Oregon sunset agate are available at Richardson ranch in Madras. A sign-up will be posted at the shop to see if there is any interest. You can leave a message at:

info@lithophiles.com if you would like to go.

Classes: The wire wrap jewelry class is June 8th. At the meeting time two openings were available. Talk to Rich tonight or Stephanie before May 16th.

Refreshments: Jenny and Frank will bring refreshments in June.

Arts council: The Arts Council has reserved the hallway outside the library meeting room for August. Our club can put in a case to highlight our activities.

Fair: The fair entry is due May 22; set-up is June 8-10.

Members: Bill Beiriger said an article on his sand collection that will be published in the Independent.

Meeting adjourned: 9:07 pm.

Minutes of the Board Meeting

May 23, 2013

Bill Beiriger, Rich Hunt, Dick Friesen, Andrea Rodrigues, and Lee Davisson in attendance.

Slab saws have been cleaned. The 18" is now working, but the 20" still needs more oil and a small part for better securing the clamp. Frank Gouveia is taking care of the latter, and we are waiting for the used oil in buckets to settle suspended solids in order to judge whether more oil is needed.

Slab saw training of weekly Forepersons will be facilitated by Dick on shop nights, but when both saws are fully operational.

Summer field trip to Oregon had lukewarm reception. Rich will narrow down locations and dates for second week of July.

The possibility of starting a club Facebook page was discussed and will be brought up at the June meeting.

Wire-wrap class is scheduled for June 8th.

Petroglyph presentation for the June meeting.

Lee Davisson

Wire-Wrap Jewelry Class

The wire-wrap jewelry class is set for June 8, for more details contact Stephanie Goldsmith, 447-1722. The fee is \$15. Check with Stephanie to see if the class has any openings.

Canceled Stamps

I am still collecting canceled stamps to send to the California Federation for their scholarship program.

Most stamps are now "forever" stamps, but they are still requested, except for canceled liberty bell stamps.

Please do not cut the stamps; leave some room around the stamps and do not cut the perforations!

I will continue collecting them, please bring them to a meeting or to the shop.

If you don't save your Lithogram please save the stamps.

Thanks, Bill Beiriger

The Volcanoes of Alaska.

Compiled by Bill Beiriger

Information and Photos from the Global Volcanism Program - Smithsonian Institution.



Wrangell - Eastern Alaska

Last Eruption - 2002

14,163 feet

62.00° N 144.02° W

With a diameter of 30 km at 2000 m elevation, 900 cu km Mount Wrangell is one of the world's largest continental-margin volcanoes. The massive andesitic shield volcano has produced fluid lava flows as long as 58 km and contains an ice-filled 4-6 km diameter caldera located within a 15-km-wide ancestral caldera. Most of the massive shield volcano was constructed during eruptions between about 600,000 and 200,000 years ago. Formation of the summit caldera followed sometime between about 200,000 and 50,000 years ago. Three post-caldera craters are located at the broad 4317-m-high summit of the volcano, along the northern and western rims of the 1-km-deep, ice-filled caldera. A steep-sided flank cinder cone, Mount Zanetti, is located 6 km NW of the summit. The westernmost cone has been the source of infrequent historical eruptions beginning in the 18th century. Increased heat flux in recent years has melted large volumes of ice in the northern crater.

Photo by B. Cella (U.S. National Park Service).

<http://www.volcano.si.edu/world/volcano>

Shop Talk
By Frank Gouveia



Where's My Dop Stick



Have They Nodded Off ?

**Shop Talk
By Frank Gouveia**

Slab Saw Cleaning



Albert



Dick



Lee



The Heart of the Problem



Frank & Dick



The Crew



Frank

The Shop is open from 7pm to 10pm every Tuesday. Contact Albert Hess if you would like to come in early on any given Tuesday he can open the shop around 3pm.

Shop Forepersons:

1st Tuesday – Stephanie Goldsmith 2nd Tuesday – Frank Gouveia

3rd Tuesday – Chris Hunt 4th Tuesday – Diana Carey

SEE WHAT YOU MISSED

by Lee Davisson; pictures by Frank Gouveia

Yes, there was a field trip to the Rosicrucian Museum in San Jose this month and just about everybody missed it. Only Frank and I participated, me being the trip leader and Frank being generous with his time, patient with my comments and questions on stone carving, but showing a genuine interest and keen insight into the museum's artifacts.



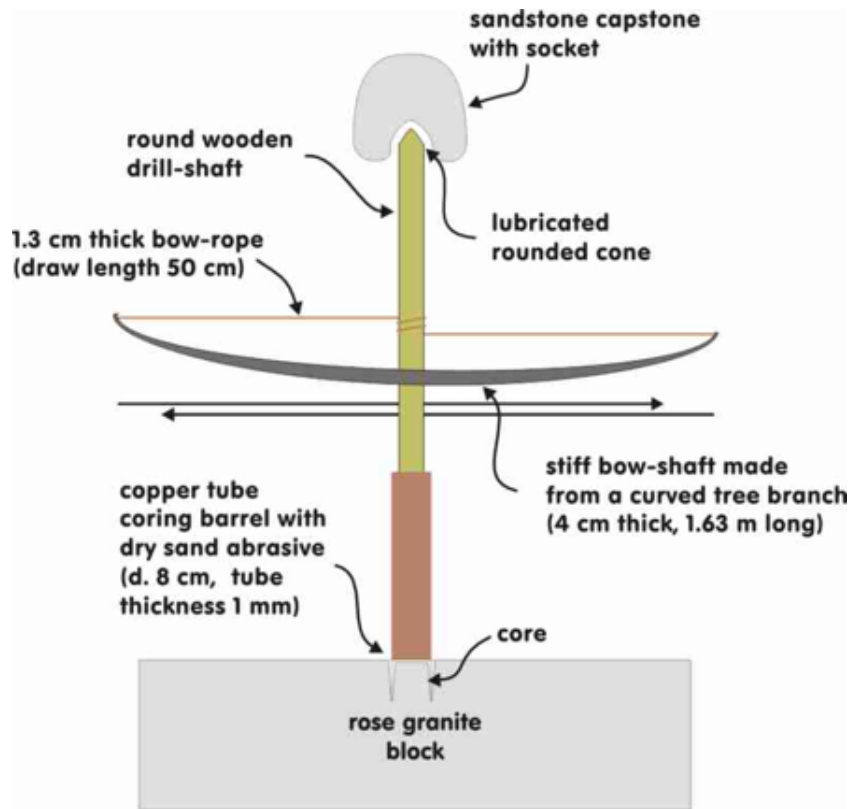
The Rosicrucian Museum houses and curates thousands of Egyptian artifacts dating from the early dynastic period (ca. 3100 BC) through Islamic rule (ca. 600 AD). The artifacts range from stone sculptures of their Gods, to jewelry, to mummies. They also have some Sumerian artifacts from Mesopotamia, including cuneiform clay tablets, weapons, and some everyday items.

More relevant to our club, there are a number of excellent examples of ancient Egyptian stonework. For example, below are pictures of a stone bowl on the left and a small pot on the right.

The bowl is made out of greywacke, which is low-grade metamorphic sandstone. The pot is made out of diorite, a volcanic rock which in Egypt is one of the hardest materials found. Most fascinating is the fact that these vessels were carved around 5000 years ago when the only forged metal available was copper, a material much softer than these stones.



Exactly how they carved these shapes (in large quantity) has been a focus of research for decades. The most insightful research has shown that more than likely the Egyptians forged copper drill bits and used dry sand as an abrasive. The drilling action was facilitated with mechanisms such as a bow and string as illustrated in the figure below. Apparently, once a drill core was made into the stone and excavated, it was a matter of removing stone outwards to make the inside bowl shape. Removal was likely again with sand abrasive and hard stone. On the greywacke bowl you can still see the circular drill shape cut at the base of the bowl.

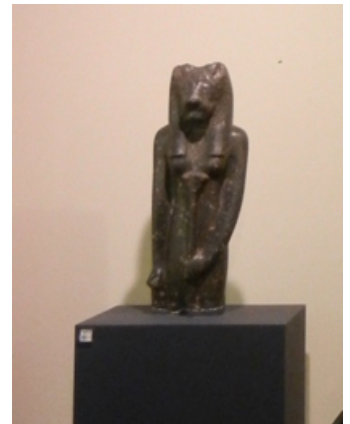


http://www.oocities.org/unforbidden_geology/ancient_egyptian_stone_vase_making.html



The Egyptians used a wide variety of stone. Limestone was commonly used in architecture because of its availability and abundance, as well as quarry locations adjacent to the Nile River, which made transportation easier. The Pyramids of Giza are constructed from limestone. They also used limestone for decorative facades, such as the relief sculpture in the picture to the left.

Another example of stonework is that of black granite used only for sculpting their Warrior God Sekhmet, pictured here at the right. Although they weren't able to place a high polish on granite like we do today (for example, countertops) they did a pretty remarkable job. It is thought they used very fine abrasive (such as powder generated from more coarse polishing) along with polishing stones or cloth for finishing.



Hazel-Atlas Mine Field Trip Report



The Egyptians of course were very much into decorative jewelry. They made wide use of local stones that they polished, as well as, glass. Although lapis was relatively available from the eastern desert, turquoise wasn't, and so they often simulated turquoise with a ceramic glaze over other stone, wood, or even cloth. This technique was known as faience. Picture to the left are various examples of stone jewelry and beading at the museum. Beads include glass, jade, carnelian, lapis, and faience. In addition, you can see examples of jade bracelets and carnelian rings.

ANSWER THE QUESTION:

How did they drill holes in these beads? In particular, jade and carnelian is pretty hard stone, so in the absence of steel and diamond abrasive, how did they make them?

Summer Field Trip

Summer Field Trip

**It looks like it will take place the Second Week of July
- - Please Come to the June General Meeting - -
If you may be interested PLEASE let Rich Hunt know.**

The Lithophiles are looking at a field trip that will be about 7 - 10 days to a couple of collecting areas in Oregon.

There are motels in the area but you better make reservationa now or you may be out of luck.

The main site is at Madras, Oregon. The collecting at Richardson Ranch.

Madras is about 9 hours and 550 miles from Livermore in North Central Oregon.

The trip will be in July and hopefully the weather will cooperate.

Madras has a temperature range of 47° low and 87° high in July.

Precipitation is less than 1 inch in July.

If the weather doesn't cooperate it could get to about 100° for a high.

California Shows And Events

2013

July 13 - 14: CULVER CITY, CA
Culver City Rock & Mineral Club
 Culver City Veterans Memorial Auditorium
 4117 Overland Avenue
 Hours: Sat 10 - 6; Sun 10 - 5
 Contact: Rick Shaffer, (310) 391-8429
 Email: info@culvercityrocks.org
 Website: www.culvercityrocks.org

Aug. 30 - Sept. 2: FORT BRAGG, CA
Mendocino Coast Gem & Mineral Society
 Town Hall
 Corner of Main & Laurel
 Hours: Fri-Sun 10 - 6; Mon 10 - 4
 Contact: Jerry Sommer, (707) 937-1833

September 28 - 29: LODI, CA
Stockton Lapidary & Mineral Club
 Lodi Grape Festival Grounds
 413 East Lockford Street
 Hours: 10 - 5 daily
 Contact: Jerold Kyle, (209) 368-9411
 Email: jeroldkyle@yahoo.com
 Website: www.stocktonlapidary.com

September 28 - 29: MONTEREY, CA
Carmel Valley Gem & Mineral Society
 Monterey Fairgrounds
 2004 Fairgrounds Road
 Hours: Sat 10 - 6; Sun 10 - 5
 Contact: Janis Rovetti, (831) 372-1311
 Email: janis12@sbcglobal.net
 Website: www.cvgms.org

September 28 - 29: SANTA ROSA, CA
Santa Rosa Mineral & Gem Society
 Wells Fargo Center for the Art
 50 Mark West Springs Road
 Hours: Sat. 10 - 6; Sun 10 - 5
 Jolene Coon, (707) 849-9551
 Email: Jolene@SRMGS.org
 Website: www.srmgs.org

October 19 - 20: PLACERVILLE, CA
El Dorado County Mineral & Gem Society
 El Dorado County Fairgrounds
 100 Placerville Drive
 Hours: 10 - 5 daily
 Contact: Arlene Williams, (530) 676-2472
 Email: info@rockandgemshow.org
 Show Website: www.rockandgemshow.org
 Club Website: www.eldoradomineralandgem.org

November 23 & 24, 2013 Livermore
 LITHORAMA 2013 Show and Sale,
Livermore Valley Lithophiles Gem & Mineral Society; The 'BARN'
 3131 Pacific Ave. east of Livermore Ave.
 Hours: Sat. 10-5; Sun. 10-4. Visit us at our website www.lithophiles.org

Show information is available at the California Federation of Mineralogical Societies website: www.cfmsinc.org

Additional Resources:

American Federation of Mineralogical Societies website: www.amfed.org

American Lands Access Association website: www.amerlands.org

CO-OP website: www.coop.freeservers.com

Field Trips

Livermore Valley Lithophiles

Bill Beiriger, Editor
P.O. Box 626
Livermore, CA 94551-0626
info@lithophiles.com

We're on the Web at www.lithophiles.org

**MEMBERS
DUES ARE DUE**



Elected Officers and Club Information

Elected Officers:

President Rich Hunt (925) 443-5525
V. President Lee Davisson (925) 371-0699
Secretary Larry Patzkowski (925) 426-7768
Treasurer Shelley Buchberger (925) 292-7122

Membership: The Livermore Valley Lithophiles invites to its membership anyone genuinely interested in minerals, gems, lapidary, geology or any of the other earth sciences, and who desires association with others of like interests. Membership in our club consists of three classes: Senior, anyone eighteen years or older; Junior, anyone under eighteen; and Honorary. Dues are for the calendar year and are as prescribed in the by-laws, Article III. \$25.00 per family, \$20.00 per individual and \$10.00 for Juniors (twelve and older.)

Meetings: General Meeting – Second Thursday of each month, 7:30 p.m. (**Locations change goto Lithophiles WEB-SITE**). Board Meeting – Fourth Thursday of each month, 7:30 p.m. at the Club Shop or to be announced in the *Lithogram*. Any special meetings or places will be published in the *Lithogram*.

Club Shop: The shop at the Barn is open to club members 7:00 p.m. to 10:00 p.m.. on Tuesday nights. If no one arrives by 7:30 p.m.. or if the Shop Foreman has not been informed a member will arrive late, then the shop will close at 7:30 p.m. Shop Foreman, OPEN.

Field Trips: Location and date will be published in the *Lithogram*.

Bulletin: *Livermore Lithogram*. Published monthly and mailed or emailed to active members and guests. News of interest, reports and articles must be received by the first Tuesday of the month. Articles may be reprinted by giving proper credit.

Editor:
Bill Beiriger,
Livermore, CA 94551-0626,
email: info@lithophiles.com

Shop open every Tuesday at 7:00 PM

**General Meeting June 13th, at 7:30 PM
Board Meeting June 27th, 7:30, At the SHOP**