

Livermore

Lithogram

DUES ARE DUE.



Volume XXXX, Number 3
 March 2015
 Livermore Valley Lithophiles
 Livermore, California

Next General Meeting:
 Thursday, March. 12, 2015
 Community Room
 7:30 PM

Program:
Flintknapper - Primitive Skills Demonstrations:
Ken Peck, Mineral & Gem Society of Castro Valley.
He will have material for sale.

Next Board Meeting:
 Thursday, March. 26, 2015
At the Shop
 Members are welcome to attend!

Meeting Location: Livermore Library Community Room

Refreshments: Joann Kilpatrick and Bill Bish

Daylight Savings Time.	
Set Clock Ahead	
March 8th	
<i>Inside this issue:</i>	
General Meeting - Minutes	2
Board Meeting - Minutes	3
Royal Ontario Museum (ROM)	4
School / Scouts Report	5
Beading Buddies	6
California Geological Survey	7
Shop Report	8-9
Kaleidoscope Jasper	10
Shows & Events & Field Trips	11

Presidents Message:
A World Connected (another sermon)

Most of us grew up at a time when group activities were about the only way (aside from reading books) to develop a hobby, skill, or special knowledge. For instance, it was easy to reach out and find an organized club focused on anything from basket weaving to basketball. Gem, mineral, and geologic societies were just as popular. Furthermore, clubs were well populated, met regularly, and were social. However, I think we all recognize that gem and mineral clubs are now becoming less popular and experiencing a loss in attracting younger people.

It's easy to blame competitive distractions such as video games, social media, etc. Certainly these things are occupying young people's time and interest. However, if you think back about what drew you to gem, mineral, and rocks you probably can summarize it by saying, "I just like to collect them and wanted to learn more and do things with them". Many of the distracted young people no doubt still have the same propensity to collect, admire, or form the natural world into an art piece. Where I'm going with this is simple. Young people also have a propensity to connect to others with similar interests, but electronically rather than in person. Social media has provided a wide open freeway

Minutes of the General Meeting **February 12, 2015**

Corrections to minutes: Refreshments should have been Chris Hunt instead of Frank Gouveia, and Lithorama new Food Chairperson is Connie Gouveia.

Shop:

Cabinets installed; see pictures in Lithogram

Clip replace on door to Barn and is now more secure

Researching more shields for lap grinders

Traffic is about 2-3 people per week

Have a work day to fill new cabinets

Treasurer:

State of CA deems us tax exempt now

~\$28,000 bank balance: \$17,500 checking; \$10,700 savings

Schools:

4th graders at St Michaels and Marilyn Ave.

2nd graders at St. Michaels

Scouts and other groups

Working on presentation to 6-8th graders

Emailed to schools re: what we could do for them and they for us; one suggestion is after school club

Other:

Membership cards coming

Beading Buddies on Feb 28th at Pat Ianucci's 1-4pm, RSVP to Pat

Tom Johnston, Lee Davisson, and Richard Ochoa will be doing recon for lapidary material – scouting for possible field trips

Los Vaqueros hike not rescheduled yet

Refreshments for next meeting: Joann Kilpatrick and Bill Bish

Science Odyssey on Feb 26th – come help the middle school science fair

Presidents Message - continued from pg. 1

of networking possibilities. You can learn thousands of different skills just watching online videos and trying things out for yourself. You don't need to join a club and learn person-to-person when you might have a video series that teaches a number of methods that you can learn at a time and pace most convenient for you. I suggest anyone reading this to do YouTube searches for any type of lapidary technique, and I'll bet you will find most everything. But does YouTube really teach you everything you need to know about the lapidary arts? Of course it doesn't, but a young novice may not know this.

I would like to propose the follow: Organized clubs with seasoned experts in lapidary arts or mineral and rock collectors should consider making social media an avenue to reach out to young people who have an interest in this topic. Make it a club activity to produce your own videos to post on YouTube. Clubs will likely do the best job at teaching this audience through this medium. Furthermore, we as clubs should consider that the meaning of a "club" isn't only having a monthly meeting in person and engaging in traditional club activities. Club members today may not even need to live in your area and could even live in another country! Sound crazy? Perhaps, but it's not beyond the realm of being possible with social media available to share, learn, and teach, just as we do as a club in person.

Quiz question:

Where was the drill hole completed to the Earth's mantle?

Know he answer? Supply an answer via email and perhaps win a prize.

**Minutes of the Board Meeting
March 2, 2015**

Not Received in Time

DUES ARE DUE.

Geological Museums in the United States and Canada.

Royal Ontario Museum - Toronto, Ontario, Canada

Compiled by Bill Beiriger

This museum is a showcase of one of the best collections of Dinosaurs in the world. There are many other prehistoric fossils on display, including marine life, fossilized plants, early insects and a large collection of fossils from the Burgess Shale beds in the Canadian Rockies.

You will be a little spot on the floor as Barosaurus (85') and Quetzalcoatus (40') look down on you deciding who will be their dinners for that day.

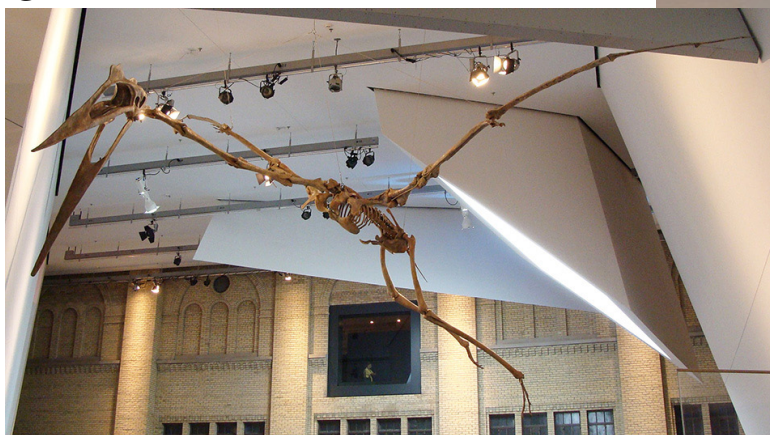
Their collection of ceratopsian dinosaurs has filled in the gaps of that group's evolution.

The Mineral Hall also has a large collection with some very large specimens. When I went to the museum in the 70's & 80's I was impressed by the information that was given in their educational displays.



Barosaurus

Quetzalcoatus



Amethyst Cathedral



Gogotte Sandstone Concretion

School Report Bill Beiriger



I have started giving my presentations to the 2nd and 4th grade students for 2015.

February 3rd found me at St. Michael's School in Livermore where I had a small class of 2nd Graders.

On February 5th I gave presentations to three 4th Grade classes at Marylin Avenue School on Rocks and Minerals.

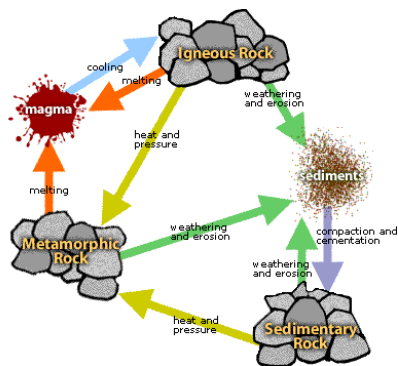
Then I was back at St. Michaels School on February 10th for the 4th Grade class with a Rock and Mineral presentation.

I then had a two week break until Feb. 24th when I had Cub Scouts Troop 914 at the Morman Church on Hillcrest.

Science Odyssey at Junction School, Bill Bish judged and Lee Davisson and I carried the GLOW ROOM to the school and showed what rock thinsections look like with Petrographic Microscopes.



St. Michaels 2nd Grade
February 3, 2015



Bill & Lee at Science Odyssey
February 26, 2015

**Beading Buddies
February 28, 2015**

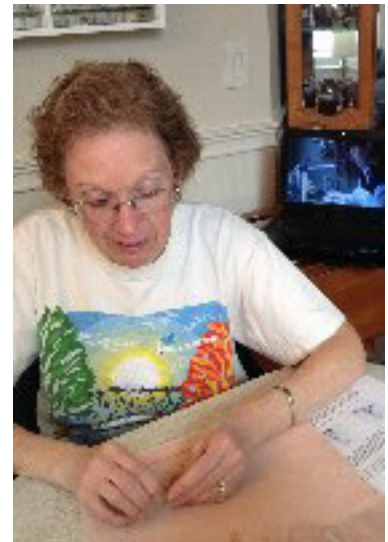


Pam

Chris



Finished Project



Flat Stanley



**Mary Kay
Skyping from Texas**

Next Beading Session Saturday, March 28, 1-4pm at Pat's house.

Geologic Facts about California
California Geological Survey (CGS)
This Information is from the 150th Anniversary of the CGS

The most productive gold mine in California was the Empire Mine, which produced nearly six million ounces. The McLaughlin Mine, southeast of Clear Lake, produced over 3 million ounces of gold.

In 2000, CGS published a poster showing 13,500 historic gold mines throughout the state.

Construction aggregate (sand and gravel and crushed stone), used in buildings, roads, and other structures, is California's leading industrial mineral with a total value of \$1.1 billion produced in 2008.

More than 200 million tons of construction aggregate is produced in California each year. This is between 6 and 7 tons per year for each person in the state.

Mercury has been mined in the Coast Ranges from the Santa Barbara area to Lake County. The three largest mercury producing areas in the Coast Ranges include the New Almaden, New Idria, and Mayacamas mining districts.

Large crystals and gems formed in pegmatite dikes in the Peninsular Ranges have been mined primarily from three areas in San Diego County: Pala, Rincon, and Mesa Grande districts.

The Pine Creek Mine in the Tungsten Hills area of the northern Basin and Range Province was the world's major source of tungsten for many years. Tungsten is a metal used for electrical purposes and in hardening alloys such as steel.

Borates, typically used in cleaning materials, were first discovered in California in 1856 Tehama County in 1856. Large deposits in the southern California desert areas near Boron were found in the late 1800s and early 1900s. For many years, California has produced a significant portion of the world's borates. They have a wide variety of uses in many industries including: agriculture, ceramics, glass and fiberglass manufacture, and the chemical industries.

Under California's Surface Mining and Reclamation Act of 1975, all active mines must be reclaimed to a second, beneficial use when mining is completed. Examples include reclaiming mining pits to: strawberry fields or other types of crops; grazing lands or wildlife habitats; lakes and recreational areas; and residential or industrial property.

There are more than 47,000 abandoned mines in California that may present safety and/or environmental hazards. Since 1997, the Abandoned Mine Lands Unit of the Department of Conservation has conducted field inventories, provided preliminary assessment of health and safety hazards observed, and worked with other agencies, including CGS, to remediate hazardous abandoned mine features where feasible.

Shop Report

Frank Gouveia

With spring approaching this month the wintery evenings at the shop are coming to a close.

We have seen a steady attendance in February of some of our newest members including Bear Dean, Joe Wiley and Cindy Campbell. We also have had a good showing of our seasoned members such as Stephanie Goldsmith, Fred Wang, Lee Davisson, Tom Johnston, Richard Ochoa, and Diane Day.

As usual Stephanie has been very helpful in assisting some of our new members in getting started in the shop while I just try to stay out of their way but assisting when called upon.

It looks like our next step in shop cleanup and organization will be to free up some space in the bookshelves for our ever growing library (thank you Bill Beiriger) and go through the old cabinets tossing out old stuff we don't need any more. This will most likely involve our senior members who know what the stuff even is.

The next big projects will be painting the slab saw room (maybe?) and the loft Yikes!!

Thanks again to everyone who has helped make the shop a great place to visit.

The Shop is open from 7pm to 10pm every Tuesday.

Shop Forepersons:

1st Tuesday – Stephanie Goldsmith

2nd Tuesday – Frank Gouveia

3rd Tuesday – Tom Johnston

4th Tuesday – Richard Ochoa

5th Tuesday- Mystery Guest Foreman....Ooooooh!

Why Our Shop Is Getting Popular



We Made Gold!!!



We Made a Wheel!!!



Tom



Richard



Fred

Bear

Wisdom from the Seat of a Tractor.....



Old Farmer's Advice

“Your fences need to be horse-high, pig-tight and bull-strong.”

“Keep skunks and bankers at a distance.”

“Life is simpler when you plow around the stump.”

“A bumble bee is considerably faster than a John Deere tractor.”

“Words that soak into your ears are whispered...not yelled.”

“Meanness don't just happen overnight.”

“Forgive your enemies; it messes up their heads.”

“Do not corner something that you know is meaner than you.”

“It don't take a very big person to carry a grudge.”

“You cannot unsay a cruel word.”

“Every path has a few puddles.”

“When you wallow with pigs, expect to get dirty.”

“The best sermons are lived, not preached.”

“Most of the stuff people worry about, ain't never gonna happen anyway.”

“Don't judge folks by their relatives.

“Remember that silence is sometimes the best answer.”

“Live a good and honorable life, then when you get older and think back, you'll enjoy it a second time.”

“Don 't interfere with somethin' that ain't bothering you none.”

“Timing has a lot to do with the outcome of a rain dance.”

“If you find yourself in a hole, the first thing to do is stop diggin'.”

“Sometimes you get, and sometimes you get got.”

“The biggest troublemaker you'll probably ever have to deal with, watches you from the mirror every mornin'.”

“Always drink upstream from the herd.”

“Good judgment comes from experience, and a lotta that comes from bad judgment.”

“Lettin' the cat outta the bag is a whole lot easier than puttin' it back in.”

“If you get to thinkin' you're a person of some influence, try orderin' somebody else's dog around.”

“Live simply, love generously, care deeply, speak kindly, and leave the rest to God.”

“Don't pick a fight with an old man. If he is too old to fight, he'll just shoot you.”

-Author unknown

California Shows And Events

2015

March 6 - 8: NEWARK, CA
Mineral & Gem Society of Castro Valley
 Newark Pavilion
 6430 Thornton Avenue
 Hours: Fri & Sat 10 - 6; Sun 10 - 5
 Contact: Cathy Miller, (510) 887-9007
 Website: www.mgscv.org

March 14 - 15: TURLOCK, CA
Mother Lode Mineral Society, Modesto
 Stanislaus County Fairgrounds
 900 North Broadway
 Hours: 10 - 5 daily
 Contacts: Bud & Terry McMillin, (209) 524-3494, cell (209) 484-4416
 Email: terry_mcmillin@yahoo.com
 Website: www.turlockgemshow.com

March 28 - 29: ROSEVILLE, CA
Roseville Rock Rollers
 Roseville (Placer County) Fairgrounds
 800 All American City Blvd
 Hours: Sat 10 - 5; Sun 10 - 4
 Contact: Gloria Marie, (916) 216-1114
 Email: gloriarosevillerockrollers@gmail.com
 Website: www.rockrollers.com

March 28 - 29: ANGELS CAMP, CA
Calaveras Gem & Mineral Society
 Calaveras County Fairgrounds, 101 Frogtown Road
 Hours: Sat 10 - 5; Sun 10 - 4
 Contact: Robin Williams, (209) 728-8277
 Email: amy95247@yahoo.com
 Website: www.calaverasgemandmineral.org

April 4 - 5: CHICO, CA
Paradise Gem & Mineral Society
 Silver Dollar Fairgrounds
 2337 Fair Street
 Hours: 10 - 4 daily
 Contact: Manuel Garcia, (530) 877-7324
 Website: www.paradisegem.org

April 11 - 12: MARIPOSA, CA
Mariposa Gem & Mineral Society
 Mariposa County Fairgrounds
 5005 Fairgrounds Road (S. of Mariposa on Hwy49)
 Hours: Sat 10 - 5; Sun 10 - 4
 Contact: Randy Bolt, (209) 742-7625
 Email: rockmuseum@sti.net

April 18 - 19: SAN JOSE, CA
Santa Clara Valley Gem & Mineral Society
 Santa Clara County Fairgrounds
 334 Tully Road
 Hours: 10 - 5 daily
 Contact: Frank Mullaney, (408) 265-1422
 Email: info@scvgms.org
 Website: www.scvgms.org

April 25 - 26: SANTA CRUZ, CA
Santa Cruz Mineral & Gem Society
 Santa Cruz Civic Auditorium
 Church Street & Center Street
 Hours: 10 - 5 daily
 Contact: Dean Welder (408) 353-2675
 Website: www.scmgs.org

**CALIFORNIA FEDERATION
 MINERALOGICAL SOCIETIES**
 76th Annual
 SHOW & CONVENTION
 Friday, Saturday & Sunday
 JUNE 12 - 14, 2015
 Friday & Saturday: 10:00 - 5:00
 Sunday: 10:00 - 4:00
 413 East Lockeford Street
 Lodi, California

November 21-22: LIVERMORE, CA
Livermore Valley Lithophiles
 Lithorama 2015 is a Gem and Mineral Show and Sale & will be held at the 'BARN' in Livermore, 3131 Pacific Ave., off South Livermore Ave.
 Saturday 10:00 to 5:00
 Sunday 10:00 to 4:00
 info@lithophiles.com
 www.lithophiles.org

Show information is available at the California Federation of Mineralogical Societies website: www.cfmsinc.org

Additional Resources:

American Federation of Mineralogical Societies website: www.amfed.org

American Lands Access Association website: www.amerlands.org

CO-OP website: www.coop.freeservers.com

Field Trips

Several members are going to scout out a couple of possible field trip areas in Northern California and will report back to the society in the near future. These areas should offer the members a place to collect in late Spring or Early Summer.

The CFMS Show will be held June 12-14 in Lodi, there should be Field Trips as part of this event.

Watch and read more about both of these Field Trips in the next couple of months.

Livermore Valley Lithophiles

Bill Beiriger, Editor
P.O. Box 626
Livermore, CA 94551-0626
info@lithophiles.com

We're on the Web at www.lithophiles.org



Elected Officers and Club Information

Elected Officers:

President Lee Davisson (leedavisson@sbcglobal.net)
V. President Tom Johnston (tj5646@gmail.com)
Secretary Molly Alexander (925) 606-6977
Treasurer Bill Bish (bcbish@att.net)

Membership: The Livermore Valley Lithophiles invites to its membership anyone genuinely interested in minerals, gems, lapidary, geology or any of the other earth sciences, and who desires association with others of like interests. Membership in our club consists of three classes: Senior, anyone eighteen years or older; Junior, anyone under eighteen; and Honorary. Dues are for the calendar year and are as prescribed in the by-laws, Article III. \$25.00 per family, \$20.00 per individual and \$10.00 for Juniors (twelve and older.)

Meetings: General Meeting – Second Thursday of each month, 7:30 p.m. Civic Center Livermore Library Community Room (**Locations change goto Lithophiles WEB-SITE**). Board Meeting – Fourth Thursday of each month, 7:30 p.m. at the Club Shop or to be announced in the *Lithogram*. Any special meetings or places will be published in the *Lithogram*.

Club Shop: The shop at the Barn is open to club members 7:00 p.m. to 10:00 p.m.. on Tuesday nights. If no one arrives by 7:30 p.m.. or if the Shop Foreman has not been informed a member will arrive late, then the shop will close at 7:30 p.m. Shop Foreman, Stephanie Goldsmith (925) 447-1722.

Field Trips: Location and date will be published in the *Lithogram*.

Bulletin: *Livermore Lithogram*. Published monthly and mailed or emailed to active members and guests. News of interest, reports and articles must be received by the first Tuesday of the month. Articles may be reprinted by giving proper credit.

Editor:
Bill Beiriger,
Livermore, CA 94551-0626,
email: info@lithophiles.com

Shop open every Tuesday at 7:00 PM

General Meeting March 12, at 7:30 PM
Board Meeting - March 26, 7:30 PM