

# Livermore



# Lithogram

Livermore Valley Lithophiles

Livermore, CA

## Next General Meeting

**Sept 14, 2017, 7:30pm**

Community Room

*Civic Center Library***Program:** Lithorama & field trip planning**Refreshments:** Siders

## Next Board Meeting

4th Thursday of the month  
at the Shop.All Members are welcome  
to attend!

## Inside this issue:

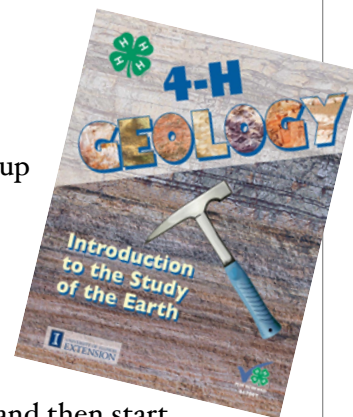
Airport Open House	1
State Fossils	2
NBFT	3
Beading Buddies	4
Lithophiles Out & About	5
Solar Eclipse	6
Shows & Events	7

## Livermore Airport Open House & Air Show

The Lithophiles have been invited to set up a table at the airport open house on October 7th (10am-4pm). There will be a number of STEM related hobby clubs from the area participating. If you would like to help out please contact Bill Bish ([bcbish@att.net](mailto:bcbish@att.net)) or Jenny Siders ([jsiders@gmail.com](mailto:jsiders@gmail.com)). We'll be discussing our options for the table at the Sept. 14 club meeting.

## 4-H Lapidary Project

Jenny Siders ([jsiders@gmail.com](mailto:jsiders@gmail.com)) is heading up the 4-H Lapidary Project and looking for people to help teach in the shop once a month. Please contact Jenny at the email above if you can help out. We'll probably have one meeting before the show in November to talk about safety and geology and then start shop meetings in December, so its only a commitment of 5 afternoons or evenings. The Lithophiles purchased the new 4-H Geology curriculum and will be adding that to the project.



Lithophile's Picnic 2017, photo provided by Rich Hunt.

# State Fossils

## Nevada State Fossils

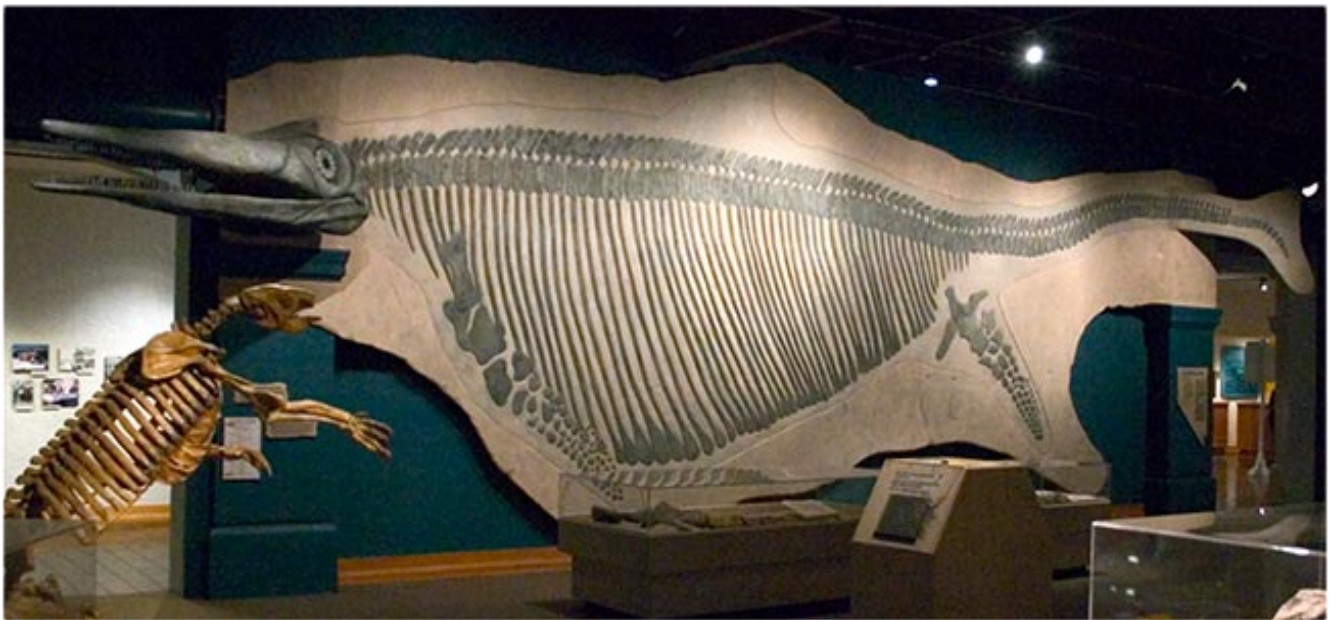
**Bill Beiriger**

***Shonisaurus popularis***, an Ichthyosaurus that lived during the Triassic Period of 225 - 250 million years ago, they are found in the Luning Formation. These animals disappeared about 160 million years ago during the Cretaceous Period.

The fossils are from the Shoshone Mountains in Central Nevada; the genus name is for that mountain range. They lived in a very eastern part of an ocean that was the forerunner of the Pacific Ocean. There is a concentration of about 40 individuals at the site. Before scientists discovered the site, early miners from Berlin, Nevada used some of the large vertebrae as dinner plates.

Some of the specimens range in size from 40 to 50 feet in length. They were much like our modern day dolphins and some were similar in size to our modern gray whales. The skulls alone are five to six feet long and contained very large eyes.

The fossil site is now the home of the Berlin-Ichthyosaur State Park, Nevada. The site contains about 37 very large ichthyosaurs. The ichthyosaur became the Nevada State Fossil in 1977.



Nevada State Museum, Las Vegas

**NBFT Fall Meeting and Field Trip Seminar****Saturday, September 23, 2017**

**Location:** Community Presbyterian Church  
200 East Leland Road, Pittsburg, CA 94565

**Hosted:** by the Contra Costa Mineral and Gem Society

**Schedule:** 8:00 – 9:00 Registration/Social with donuts and coffee  
9:00 – 10:30 Business Meeting  
10:30 - 12:15 Field trip Seminar  
12:15 – 1:00 Lunch  
1:00 – 3:30 Conclude Seminar

**Cost:** Cost of the seminar is \$1.00 for registration. Stephen May and the Santa Clara Valley G&MS will provide a free lunch of Spaghetti, salad, garlic bread and a drink, and plates and utensils.

This is a centrally located meeting site that is convenient for all NBFT societies. Please bring material for the silent auction: rocks and specimens from past field trips, rock related “white elephants” (old books, findings, tools, etc.), lapidary/jewelry items, and the like. This meeting is not just for field trip chairmen and leaders, so be sure to invite all of your club members who are interested in field trips, collecting and getting great buys on rocks and specimens.

We will start the day with the Fall Meeting business session and start the seminar late morning. In addition to reports of summer field trips we will have election of officers. We will also have announcements of fall and winter field trips. And it is not too early to start thinking about 2018 trips. Each NBFT club is expected to host a shared field trip or related activity each year. Start your planning now so that your club will have a field trip or event to share.



**2017 Lithorama**  
**November 18-19**

**The Barn**

**3131 Pacific Ave, Livermore**

**Contact Dick Friesen to request a  
display case at the show!**

**We need volunteers!**

**Please contact Lee Davisson  
[leedavisson@sbcbglobal.net](mailto:leedavisson@sbcbglobal.net)  
to see how you can help.**

This seminar is for field trip leaders, and all rockhounds that enjoy collecting; all members and guests are welcome. The seminar is presented by Dick Pankey. We will discuss the duties, responsibilities and expectations of a Field Trip Leader: planning, announcing, conducting a FT. We will also present Guideline for FT attendees: responsibilities, expectations, duties (yes, attendees have duties, too). Other topics include: how to announce your trip, field trip safety, field trip etiquette and much more.

A field trip can be more than just picking up rocks, minerals or fossils. It is often a social event shared with friends and other rockhounds. Betty Pankey will discuss the social side of FT's -- potlucks, happy hours and campfires; how to hold a potluck, what to bring and etiquette.

To help in the planning and preparation of the seminar please reserve your place by notifying Dick Pankey at [dickpankey@juno.com](mailto:dickpankey@juno.com), no later than September 20<sup>th</sup>.

**Directions:** Take Hwy 4 to Pittsburg. Exit on to Railroad Ave. Go south on Railroad to Leland Rd., approximately ½ miles. Turn left (east) and go ¼ mile, then turn right into church parking lot. Easiest access is from south side of church. Watch for the orange paper plates.



## Beading Buddies



Here're a couple of pictures from August's beading session. Our next meeting will be Saturday, Sept. 30, 1-4 pm at Dick and Andrea's. We will be making a candy cane bracelet.

Pat





# Lithophiles Out and About



Charlie Siders at the **Black Canyon of Gunnison National Park, CO.**

“The term "Vernal Mesa Quartz Monzonite" was coined by J. F. Hunter in 1925 during his research in the Black Canyon of the Gunnison. The steepness of the walls of the Black Canyon owe their existence to this rock. The hardness of the rock and the down

cutting force of the Gunnison River have worked in conjunction for approximately 2 million years to carve the canyon. The quartz monzonite is extremely resistant to erosion, so as the river cuts down and makes the canyon deeper, the hard rock keeps the walls from eroding and widening.”

<http://www.ohranger.com/black-canyon-gunnison/geology>



We went to the **Natural Bridges Trail near Angles Camp.** It was a great trip. A mile hike from the road down to a limestone cavern that runs about 250 ft thru a rocky ridge. The stream was cold and deep with many cavern formations on the ceiling. We rode inner tubes thru the cave to the other side. - Bill Bish





## North American Solar Eclipse

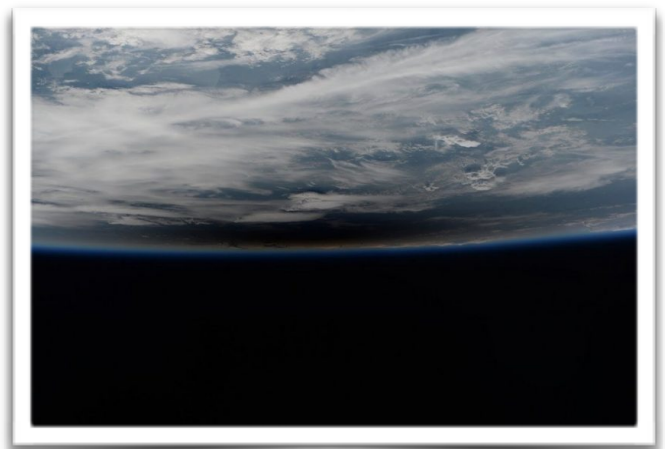
William Beiriger

I think most of us had a chance to view the solar eclipse at least as a partial eclipse, if not as a total eclipse.

I found this information on the Internet from NASA. To the right is a photo taken by Italian astronaut, Paul Nespoli, who is stationed on the International Space Station. It is a photo of the shadow of the moon on the surface of the Earth.

The graphic below, shows where the ISS was located when the photo was taken. The location was near Oceanside, California and it was at the eclipse was at 38% coverage.

One more bit of information is that our Livermore temperature only dropped by about 1° F at the maximum coverage of the Sun.



2017 233 (21 Aug) 16:40:33.00 GMT

	<b>Centerline</b>
Eclipse Type	Total
Central Duration	N/A
Magnitude	N/A
Obscuration	N/A
Latitude	N/A
Longitude	N/A

	<b>ISS</b>
Eclipse Type	Partial
Central Duration	---
Magnitude	0.481
Obscuration	38.0%
Latitude	033° 24' 34.61" N
Longitude	117° 19' 05.94" W
Yaw/Pitch to Sun	Y +056.5° P +41.4°
Yaw/Pitch to Shadow	Umbra not on Earth
Range to Shadow	Umbra not on Earth



View From ISS - Obscuration: 38.0%

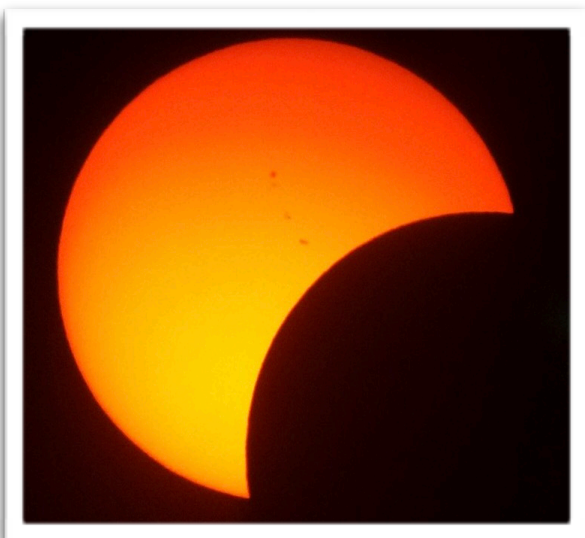


Photo by Charlie Siders, using an iPhone and TeleVue Ranger Telescope with solar filter to capture eclipse and sunspots.

*A thank you to Nancy Bankhead for putting a club display in the LCAC display at the Civic Center Library.*



# California Shows & Events

## **September 23 - 24: LODI, CA**

Stockton Lapidary & Mineral Club  
Lodi Grape Festival Grounds  
413 East Lockford Street  
Hours: 10 - 5 daily  
Contact: Jerold Kyle, (209) 368-9411  
Email: [jeroldkyle@yahoo.com](mailto:jeroldkyle@yahoo.com)  
Website: [www.stocktonlapidary.com](http://www.stocktonlapidary.com)

## **September 23 - 24: MONTEREY, CA**

Carmel Valley Gem & Mineral Society  
Monterey Fairgrounds  
2004 Fairgrounds Road  
Hours: 10 - 5 daily  
Contact: Janis Rovetti, (831) 372-1311  
Email: [janis12@sbcglobal.net](mailto:janis12@sbcglobal.net)  
Website: [www.cvgms.org](http://www.cvgms.org)

## **September 23 - 24: REDWOOD CITY, CA**

Sequoia Gem & Mineral Society  
Community Activities Building  
1400 Roosevelt Avenue  
Hours: 10 - 5 daily  
Contact: William Spence, (408) 398-7502  
Email: [bill.spence777@sbcglobal.net](mailto:bill.spence777@sbcglobal.net)  
Website: [www.sequoiagemandmineralsociety.org](http://www.sequoiagemandmineralsociety.org)

## **October 21 - 22: PLACERVILLE, CA**

El Dorado County Mineral & Gem Society  
El Dorado County Fairgrounds  
100 Placerville Drive  
Hours: 10 - 5 daily  
Contact: (530) 676-2472  
Email: [info@rockandgemshow.org](mailto:info@rockandgemshow.org)  
Club Website: [www.eldoradorocks.org](http://www.eldoradorocks.org)

## **October 21 - 22: SANTA ROSA, CA**

Santa Rosa Mineral & Gem Society  
The Veterans Memorial (new date & location)  
1351 Maple Avenue  
Hours: Sat 10 - 6; Sun 10 - 5  
Contact: Jolene Coon  
Email: [santarosarockshow@hotmail.com](mailto:santarosarockshow@hotmail.com)  
Website: [www.srmgs.org](http://www.srmgs.org)

## **October 28 - 29: LOS ALTOS, CA**

Peninsula Gem & Geology Society  
Los Altos Youth Center  
One North San Antonio Road  
Hours: 10 - 5 daily  
Contact: Steve Jobe, (408) 834-5384  
Email: [steve\\_jobe@sbcglobal.net](mailto:steve_jobe@sbcglobal.net)  
Website: [www.pggs.org](http://www.pggs.org)

## **October 28 - 29: SACRAMENTO, CA**

Sacramento Mineral Society  
Scottish Rite Temple  
6151 H Street  
Hours: 10 - 5 daily  
Contact: Alyssa Mesiznger, (916) 662-5819  
Email: [gemshow@sacramentomineralsociety.org](mailto:gemshow@sacramentomineralsociety.org)  
Web Site: <http://sacramentomineralsociety.org>

## **November 4 - 5: CONCORD, CA**

Contra Costa Mineral & Gem Society  
Centre Concord  
5298 Clayton Road  
Hours: 10 - 5 daily  
Contact: Mary Hicks, (925) 289-0454  
Email: [maryhicks@comcast.net](mailto:maryhicks@comcast.net)  
Website: (temporarily under construction)

## **November 18-19: LIVERMORE, CA**

Lithorama 2016, Livermore Valley Lithophiles  
The Barn  
3131 Pacific Ave.  
Saturday, 10 - 5, Sunday, 10 - 4  
[www.lithophiles.com/lithorama.html](http://www.lithophiles.com/lithorama.html)



## Livermore Valley Lithophiles

Jennifer Siders, Editor  
P.O. Box 626  
Livermore, CA 94551-0626  
[info@lithophiles.com](mailto:info@lithophiles.com)

We're on the Web at [www.lithophiles.org](http://www.lithophiles.org) & [www.facebook.com/Lithophiles/](https://www.facebook.com/Lithophiles/)

---

## Elected Officers & Club Information

### Elected Officers:

<b>President</b>	<b>Lee Davisson</b> <a href="mailto:leedavisson@sbcglobal.net">leedavisson@sbcglobal.net</a>
<b>V. President</b>	<b>Stephanie Goldsmith</b>
<b>Secretary</b>	<b>Molly Alexander (925) 606-6977</b>
<b>Treasurer</b>	<b>Bill Bish ( <a href="mailto:bcbish@att.net">bcbish@att.net</a> )</b>

**Membership:** The Livermore Valley Lithophiles invites to its membership anyone genuinely interested in minerals, gems, lapidary, geology or any of the other earth sciences, and who desires association with others of like interests. Membership in our club consists of three classes: Senior, anyone eighteen years or older; Junior, anyone under eighteen; and Honorary. Dues are for the calendar year and are as prescribed in the by-laws, Article III. \$25.00 per family, \$20.00 per individual and \$10.00 for Juniors (twelve and younger.)

**Meetings:** General Meeting – Second Thursday of each month, 7:30 p.m. Civic Center Livermore Library Community Room (**Locations change go to Lithophiles WEB-SITE**). Board Meeting – Fourth Thursday of each month, 7:30 p.m. at the Club Shop or to be announced in the *Lithogram*. Any special meetings or places will be published in the *Lithogram*.

**Club Shop:** The shop at the Barn is open to club members 7:00 p.m. to 10:00 p.m.. on Tuesday nights. If no one arrives by 7:30 p.m. or if the Shop Foreman has not been informed a member will arrive late, then the shop will close at 7:30 p.m. Shop Foreman, Stephanie Goldsmith (925) 447-1722.

**Field Trips:** Location and date will be published in the *Lithogram*.

**Bulletin:** *Livermore Lithogram*. Published monthly and mailed or emailed to active members and guests. News of interest, reports and articles must be received by the first Tuesday of the month. Articles may be reprinted by giving proper credit.

### Editor:

Jenny Siders  
email: [jenny.siders@me.com](mailto:jenny.siders@me.com)